



Equipped with AEM<sup>®</sup> Dryflow<sup>™</sup> Filter  
No Oil Required!

## INSTALLATION INSTRUCTIONS

### PART NUMBER: 21-522

---

2003 HYUNDAI Tiburon L4-2.0L

C.A.R.B. E.O. # D-670-2

The installation of this AEM<sup>®</sup> intake system requires some modification to the vehicle's inner fender. A specialized power tool will be needed to modify the vehicle's inner fender so the AEM<sup>®</sup> intake system can be installed. When using any power tools always use proper eye and hand protection. See steps 3D and 3E to see the details describing the necessary modification.

\* **NOTE:** Legal in California only for racing vehicles which may never be used upon a highway

## PARTS LIST

Description	Qty.	Part Number
Element Parts Kit 2.75 X 5" Dry Ele.	1	21-202DK
Upper Pipe	1	2-575
Lower Pipe	1	2-576
Hose, Silicone 2.75x2" Black	2	5-272
Mount, Rubber 1" X 6mm	1	1228599
Neoprene, 1/16" X 4" X 2" Adh.	3	8-126-2
Washer, 6mm Soft Mount	1	08160
Nut, M6 Hex Serrated	1	444.460.04
1/2" Bnd. Hose Clamp, 2.31-3.25"	4	9444
1/2" Bnd. Hose Clamp, 2.56"-3.50"	1	9448

Read and understand these instructions **BEFORE** attempting to install this product. Failure to follow installation instructions and not using the provided hardware may damage the intake tube, throttle body and engine.

The AEM® intake system is a performance product that can be used safely during mild weather conditions. During harsh and inclement weather conditions, you must return your vehicle to stock OEM air box and intake tract configuration. Failure to follow these instructions will void your warranty.

## 1. Preparing Vehicle

- a. Make sure vehicle is parked on level surface.
- b. Set parking brake.
- c. If engine has run in the past two hours, let it cool down.
- d. Disconnect negative battery terminal.
- e. Raise the front of the vehicle with a jack. Refer to your owner's manual for proper jack and jack stand placement to properly support vehicle. Support your vehicle using properly rated jack stands before wheel removal or while working under the vehicle.

**NEVER WORK UNDER A VEHICLE WITHOUT USING JACK STANDS.**

- i. Remove driver side wheel. Remove the inner fender wheel well lining.
- f. Do not discard stock components after removal of the factory system.

## 2. Removal of stock system



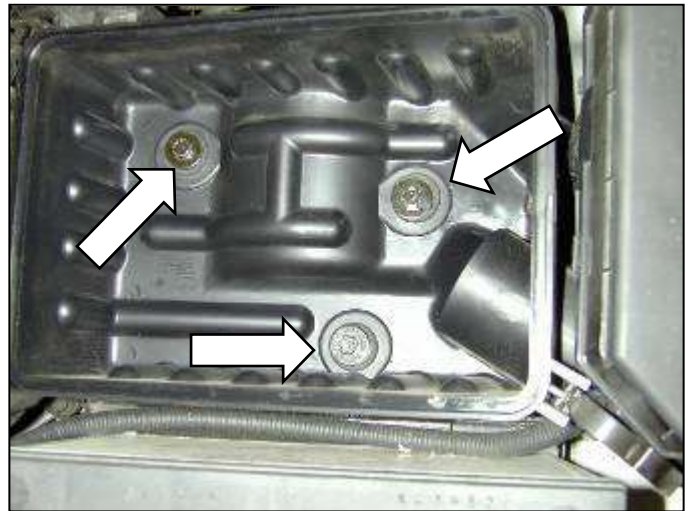
a. Loosen the hose clamps at both ends of the air inlet tubing. Remove tubing. Disconnect stock breather hose.



b. Unfasten both clips to the air box. Remove air box top by pulling up and towards the battery.



c. Remove the air filter element to gain access to lower air box mounting hardware.

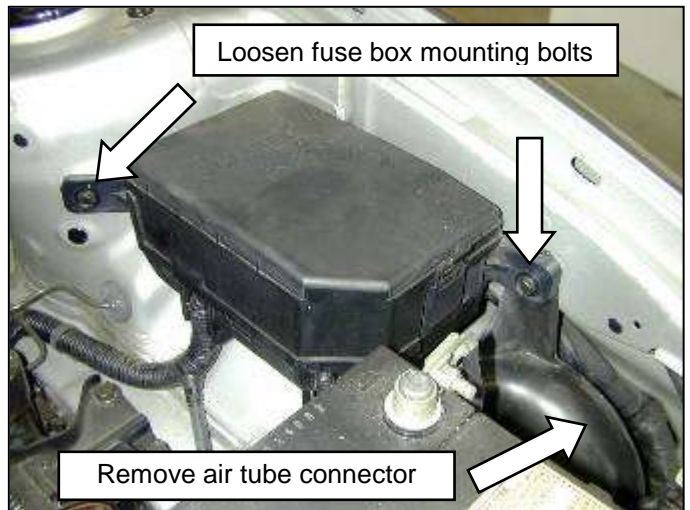


d. Loosen and remove the mounting bolts to the lower air box. Remove the lower air box from the vehicle.



Loosen and remove bolt. Remove inlet tube.

e. Loosen and remove mounting bolts to the fuse box to remove air tube connector. Reinstall mounting bolts for the fuse box.



f. Loosen and remove mounting bolt to the air duct. This is where the stock air system draws in fresh air.

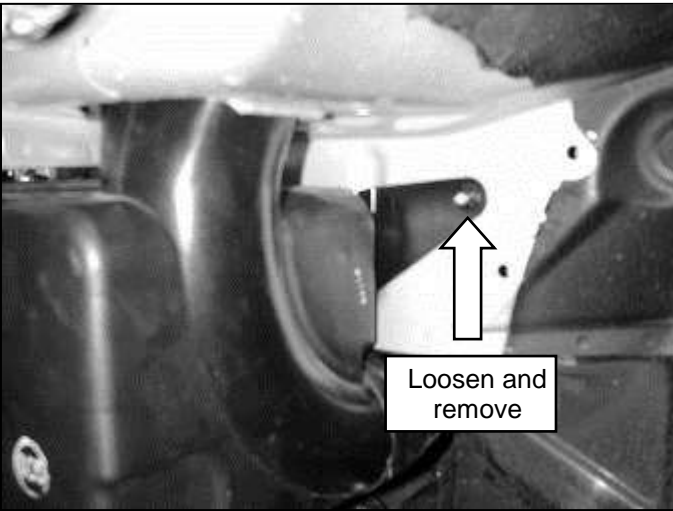




g. Unclip the factory fog light harness from the resonator. The resonator is located in the driver's side fender in front of the wheel.



h. Loosen and remove the nut on the front side of the resonator.



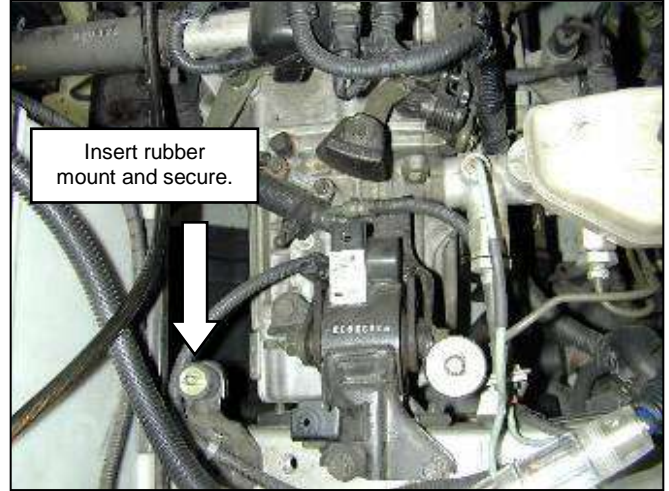
i. Remove the other nut holding the resonator. Remove the resonator assembly.

### 3. Installation of AEM® intake system.

- a. When installing the intake system, do not completely tighten the hose clamps or mounting hardware until instructed to do so.



b. Attach connecting coupler to the throttle body with provided hose clamps.



c. Insert rubber mount and secure into factory bracket.



d. The factory hole that the inlet pipe passes through must be enlarged for clearance of the AEM® intake pipe. The use of a specialized power tool will be needed to cut through the inner fender so the AEM® intake pipe is able to clear the inner fender opening. For best fitment, open up the hole to 3.5" in diameter.



e. The lower intake pipe must clear the opening as depicted in the image. Ensure that any rough or sharp edges are smoothed and that the AEM® intake pipe is able to clear the opening without touching any part of the inner fender.





f. Slide the end of the pipe under the fuse box, and then insert the upper intake pipe into the coupler.



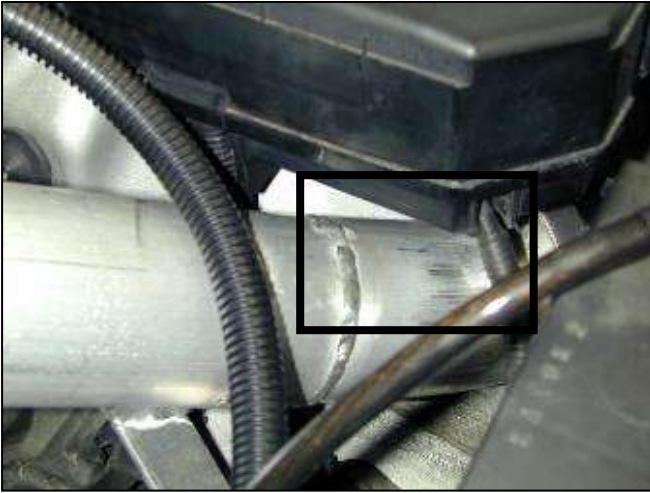
g. Line up the bracket to the rubber mount on the upper intake pipe.



h. Attach the factory breather hose to the nipple on the upper intake pipe near the throttle body.



i. Attach the remaining coupler and hose clamps to the other end of the upper intake pipe.



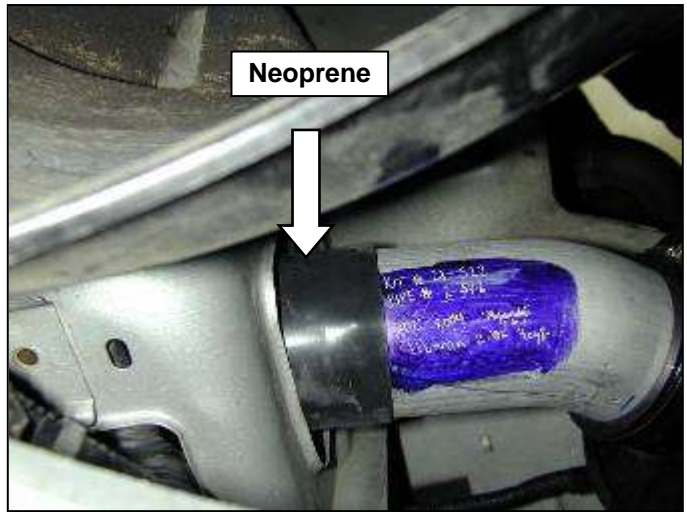
j. Due to the close proximity of the fuse box to the upper intake pipe, you will need to attach the provided neoprene adhesive to the pipe in the designated location to protect against wear.



k. Check for clearance around the upper intake pipe and secure the intake pipe bracket to the rubber mount with the provided nylok nut and washer.



l. Insert the lower intake pipe into the coupler. Check for clearance around the opening. The neoprene rubber adhesive strips should not contact the body. Apply as necessary.



m. Ensure there is clearance around the opening where the intake pipe passes through.





n. Attach the air filter element and secure with provided hose clamp.

#### 4. Reassemble Vehicle

- a. **Fender liner:** Install the fender liner and any hardware that was removed in steps through 1ei.  
**NOTE: Failure to install the fender liner will result in diminished performance and increase the potential for engine damage due to water ingestion in rainy conditions.**
- b. **Wheel:** Install the driver side wheel using the factory torque specification (see owner's manual).
- c. Position the inlet pipes for the best fitment. Be sure that the pipes or any other components do not contact any part of the vehicle. Tighten the rubber mount, all bolts, and hose clamps.
- d. Check for proper hood clearance. Re-adjust pipes if necessary and re-tighten them.
- e. Inspect the engine bay for any loose tools and check that all fasteners that were moved or removed are properly tightened.
- f. Reconnect negative battery terminals and start engine. Let the vehicle idle for 3 minutes. Perform a final inspection before driving the vehicle.

#### 5. CARB Sticker Placement

- a. The C.A.R.B. exemption sticker, (attached), must be visible under the hood so that an emissions inspector can see it when the vehicle is required to be tested for emissions. California requires testing every two years, other states may vary.

#### 6. Service and Maintenance

- a. It is recommended that you service your AEM<sup>®</sup> Dryflow<sup>™</sup> filter every 20,000 miles for optimum performance. Use AEM Dryflow cleaning kit part # 21-110.
- b. Use aluminum polish to clean your polished AEM<sup>®</sup> intake tube.
- c. Use window cleaner to clean your powder coated AEM<sup>®</sup> intake tube. **(NOTE: DO NOT USE aluminum polish on powder coated AEM intake tubes).**

For technical inquiries  
e-mail us at  
sales@aemintakes.com  
or  
call us at  
800.992.3000

### **AEM Air Intake System Warranty Policy**

AEM® warrants that its intake systems will last for the life of your vehicle. AEM will not honor this warranty due to mechanical damage (i.e. improper installation or fitment), damage from misuse, accidents or flying debris. AEM will not warrant its powder coating if the finish has been cleaned with a hydrocarbon-based solvent. The powder coating should only be cleaned with a mild soap and water solution. Proof of purchase of both the vehicle and AEM intake system is required for redemption of a warranty claim.

This warranty is limited to the repair or replacement of the AEM part. In no event shall this warranty exceed the original purchase price of the AEM part nor shall AEM be responsible for special, incidental or consequential damages or cost incurred due to the failure of this product. Warranty claims to AEM must be transportation prepaid and accompanied with dated proof of purchase. This warranty applies only to the original purchaser of product and is nontransferable. Improper use or installation, use for racing, accident, abuse, unauthorized repairs or alterations voids this warranty. AEM disclaims any liability for consequential damages due to breach of any written or implied warranty on all products manufactured by AEM. Warranty returns will only be accepted by AEM when accompanied by a valid Return Merchandise Authorization (RMA) number. Credit for defective products will be issued pending inspection. Product must be received by AEM within 30 days of the date RMA is issued.

If you have a warranty issue, please call (800) 992-3000 and our customer service department will assist you. A proof of purchase is required for all AEM warranty claims.