



advanced FLOW engineering™
 P.O. Box 1719
 Corona, CA 92878
 Support: 951-493-7100
 aFepower.com

Intake Kit Installation Instructions: 1994-2002 Dodge Ram 2500-3500 Cummins (td)

Kit Part:	51/54/75-10072		Tools Required	Part List:	Air filter replacement:
Make:	Dodge		5/16 or 8mm nut driver	1 Filter housing	1 Filter P/N 24-91026
Model:			socket or wrench	1 Housing cover	1 Filter P/N 72-90021 (optional Pro-GUARD™ 7 kit)
Year:			5/32 Hex Key	4 Cover screws	1 Filter P/N 21-90021 (optional Pro-Dry S™ kit)
Engine:			Optional: 11/16 spade drill	1 Intake tube	
Model:	Year:	Engine:		1 6" Hump coupler	
Ram 2500	'94-'02	L6-5.9L (td)		2 Clamps #104	
Ram 3500	'94-'02	L6-5.9L (td)		1 4" Straight coupler	
				2 Clamps #064	

Step 1



Complete kit with parts.

Step 2



Complete stock intake.

Step 3



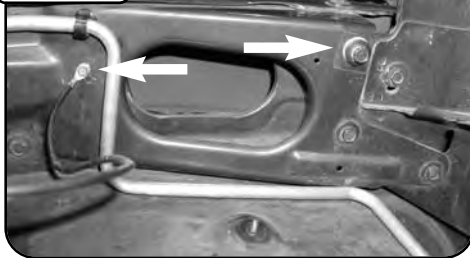
Loosen clamp at turbo inlet and remove top half of filter box and filter element.

Step 4



Remove lower half of filter box, unscrew 3 inserts and transfer inserts to new filter housing.

Step 5



Remove inner fender brace screw and ground wire screw. Trim wire connector tab on battery tray for clearance if needed.

Step 6



Lower housing into place, tab for ground screw tucks behind A/C line first, then lower to clear turbo housing. Housing should clear A/C line, line up rubber mounts and secure by pushing down hard or screwing mounts in. Install fender brace screw and ground screw and wire.

Step 7



Slip boots over intake tube and install on turbo and filter housing. It may be easier to install clamps after tube is in position. If filter restriction gauge is desired, drill an 11/16 hole with a woodworking spade bit and transfer grommet and sensor to new intake tube. Sensor should be placed near larger end of tube for accurate results.

Step 8



Install factory pre-oiled filter into housing. Install cover and make a final check for loose clamps, pinched wires etc. before starting engine.

Step 9



Make sure all clamps are tight and that all electrical components are secure. Check and retighten connections and filter after a few hours of operation.

Place the included CARB EO Sticker on or near the intake system on a smooth, clean surface. E.O. identification label is required in passing the Smog Check Inspection.