



advanced FLOW engineering™
P.O. Box 1719
Corona, CA 92878
Support: 951-493-7100
aFepower.com

Intake Kit Installation Instructions: '04.5-'05 GM Duramax Turbo Diesel LLY Stage 1 & Stage 2

Kit Part #	51/54/75-10611 Stage 1 51/54/75-10612 Stage 2 & 75-10612-0V 51/54-10619	Tools Required	10mm socket or wrench 7/16" wrench Torx bit (supplied in kit) 5/16" nutdriver or slotted screwdriver Phillips screwdriver 3/8" wrench	Part List: Stage 1	3 1/4"-20 x 1 1/8" hex head bolt 3 1/4"-20 nut	Included in P/N 75-10612-0V Value Pack Only: 1 Spare Filter P/N 21-90008 1 Pre-filter P/N 28-10051 1 Cleaning Kit 90-50500	
Make:	Chevrolet	Part List: Stage 2 (additional components included in 54-10612) (These components also comprises 54-10619 Tube Kit)	1 Air filter replacement P/N: (24-90008 or Pro Dry S™ 21-90008 or Pro-GUARD 7™ 72-90008)	1 Intake tube 1 Coupling, turbo reducer 1 Coupling, filter housing 3 Clamps, #072 1 Clamp, #060			
Model:	Year: 2004.5- 2005 Silverado HD 2500 V8-6.6L LLY (TD) Duramax Silverado HD 3500 V8-6.6L LLY (TD) Duramax			1 Housing 1 Cover 3 1/4-20 x 3/4 hex head bolt 6 Flat Washers 2 5/32" screw 1 Torx bit 1 Filter Adapter 1 Gasket, MAF sensor 3 Washer, Split Lock 2 Nylon spacers			
Make:	GMC	Note:					
Model:	Year: 2004.5- 2005 Sierra HD 2500 V8-6.6L LLY (TD) Duramax Sierra HD 3500 V8-6.6L LLY (TD) Duramax	This tube fits only the LLY engine.					



Step 1



Complete Stage 2 shown. Stage 1 kit does not include tube, clamps and couplers.

Step 2



Complete stock intake.

Step 3



Remove two screws that hold mass air flow sensor to stock airbox using supplied torx bit and remove sensor from airbox.

Step 4



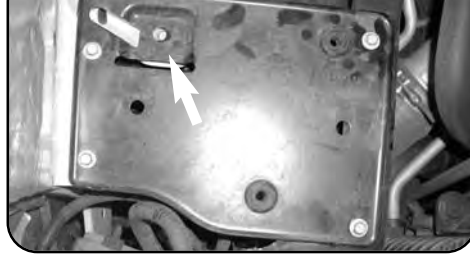
Loosen and separate stock intake tube from stock airbox.

Step 5



Remove the complete stock airbox from the rubber mounts. Pull up and slide sideways toward radiator.

Step 6



Remove (5) 10mm bolts as shown to remove airbox pan.

Step 7



Install filter adaptor to housing with screws and nuts provided. Fasten securely.

Step 8



Insert mass air flow sensor back into housing and tighten down using 2 screws, 2 nylon spacers and gasket provided between sensor and tube.

Step 9



Install housing and re-use 4 bolts from step 6. Fasten securely.

Step 10



Reconnect stock intake tube to Housing. Fasten securely. Also reconnect MAF sensor harness.

Step 11



Install filter and tighten clamp. Do not use oil or grease.

Step 12



Place cover on top of housing and fasten securely using 3 supplied 1/4-20x3/4 bolts and washers. For stage I kits, make sure all clamps are tight and all components are secure. Check and retighten connections and filter after a few hours of operation. (End of stage 1 installation instructions.)

Step 13



Complete Stage 1 kit installed, for stage II kit instructions, continue on to step 14 and 15.

Step 14



Install provided couplers. Be sure to install the small end of the tapered coupler to the turbo inlet housing. The remaining coupler must be installed with the smaller inner diameter attached to the heat shield, and the larger inner diameter will receive the Stage II tube. Install Stage II tube into couplers. Reposition duct clamps if additional clearance is necessary.

Step 15



Complete Stage 2 kit installed. Make sure all clamps are tight and all components are secure. Check and retighten connections and filter after a few hours of operation.

Note: Filter Cleaning and Re-oiling: When cleaning your aFe filter, be sure to use only aFe's "Restore Kit" (aFe P/N: 90-50001 blue oil aerosol, or aFe P/N: 90-50501 blue squeeze bottle oil or aFe P/N: 90-50000 gold oil aerosol, or aFe P/N: 90-50500 gold squeeze bottle oil).
Filter Replacement: Magnum FLOW PN: 24-90008 (black w/blue media) or P/N 72-90008 (black w/gold media) or P/N:21-90008 (black w/white media). Pro Dry S™ cleaning: see cleaning instruction sheet 06-00074
Revised 3-31-10 06-80073