



P.O. Box 1719
Corona, CA 92879
Support: 951-493-7100
www.aFeFilters.com

Intake Kit Installation Instructions: 2006-2007 Toyota Yaris L4-1.5L Stage 2 Cx

Kit Part #	51/54-11302		Tools Required:	Part List:	2) Spacers, nylon 1/2" x 1/4" x 1/4"L	1) Washer, flat M6
Make:	Toyota		5/16" nut driver	1) Air filter P/N (24-90031, or Pro Dry S 21-90031)	1) 5/8" hose @ 15"L	1) Grommet, air temp
			1/4" nut driver	1) Intake tube	2) Washer, fender: 1/4"	sensor
Model	Year	Engine	10mm socket w/ extension and ratchet	1) Housing	2) Screws M4 x .7 x 16"	1) Screw, hex M6x1x30
Yaris	2006-2007	L4 - 1.5L	Flat head / slotted screwdriver	1) Coupling, elbow: 2-1/4" @ 45 Deg.	1) Gasket, MAF sensor	
			Phillips screwdriver	2) Clamp #044	1) Screw, hex M6 x1x20	
				2) Clamp, mini #008	1) Fitting, elbow 1/2"	
				1) 7/16" Trim seal @ 12.5"L	3) Nut, hex M6	
				1) 7/16" Trim seal @ 18"L	2) Washer, wavy	

Step 1



Complete kit with parts.

Step 2



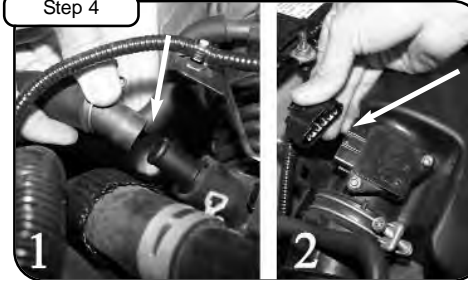
Complete stock intake.

Step 3



Remove engine cover with 10mm socket.

Step 4



1) Remove the crank case line from engine and stock intake. 2) Disconnect MAF sensor.

Step 5



Loosen intake clamp with 10mm socket and un-clip the upper half of stock air box. Remove OE intake out of vehicle.

Step 6



With 10mm socket, loosen the 2 bolts that hold in bottom half of stock air box and remove.

Step 7



With phillips screwdriver, remove MAF sensor. Install both 7/16" trim seal to new aFe housing. (as shown in step 8)

Step 8



Re-install MAF sensor to new aFe tube with hardware provided (make sure gasket and nylon spacers are between tube and sensor) using flat head screwdriver. Install tube to outside of housing and tighten using M6 screw, wavy & flat washer with M6 nut and tighten.

Step 9



Install new 5/8" line to crank case with mini clamps and tighten using 1/4" nut driver. Loosen 10mm nut holding battery bracket and save for later install. Install 1/2" elbow fitting with grommet in to new intake tube.

Step 10



Install 2-1/4" elbow with clamps provided to intake tube. Now install intake system into vehicle. Re-install 10mm nut on battery bracket and tighten.

Step 11



Using M6 nut and wavy washer provided tighten front of housing to headlight assembly using 10mm socket.

Step 12



Attach other side of crank case line to 1/2" hose fitting with mini clamp and tighten. With 5/16" nut driver tighten clamps at elbow coupler.

Step 13



Install engine cover and use the 4 cover nuts from step 3 and tighten using 10mm socket.

Step 14



Re-connect MAF sensor. Place high FLOW filter into housing and tighten using 5/16" nut driver.

Step 15



Your installation is now complete. Check all clamps and hoses periodically. Thank you for choosing aFe!

Note: Filter Cleaning and Re-oiling: When cleaning your aFe filter, be sure to use only aFe's "Restore Kit" (aFe P/N: 90-50001 blue oil aerosol, or aFe P/N: 90-50501 blue squeeze bottle oil)
Filter Replacement: Magnum FLOW PN: 24-90031 (black w/blue media) or **Pro Dry S** P/N 21-90031 (black w/white media) **Pro Dry S** cleaning: see cleaning instruction sheet 06-00074