



P.O. Box 1719  
Corona, CA 92878  
Support: 951-493-7100  
www.aFepower.com

## Intake Kit Installation Instructions: 2008 Ford Power Stroke V8-6.4L (td) Stage 2 Cx

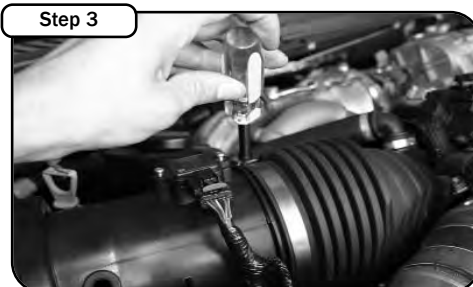
<b>Kit Part #</b>	51 / 54 / 75-11262	<b>Tools Required:</b>	<b>Part List:</b>	2 Screws, #8-32 x 5/8"
<b>Make:</b>	Ford	5/16" nut driver	1 Air filter P/N (24-91039 or Pro-GUARD 7™ 72-90049 or Pro Dry S™ 21-90049)	2 Washers, M6 wavy
<b>Model</b>	<b>Year</b>	<b>Engine</b>	1 Housing, powder coated wrinkle black	1 T-20 torx bit
Super Duty	2008	V8-6.4L (td)	1 Cover, aluminum	1 Tube
(F250/350/450/550)			1 Tube, intake	2 Clamps, #072
			4 Button head screws	2 Clamps, #052
			2 Screw, hex head M6 x 1 x 25	1 Coupler straight 3" x 2"
			2 Washers, M6 flat	1 Coupler, hump 4-1/8" x 3"
			2 Nut, M6 hex	1 Grommet
			1 MAF sensor gasket	1 Clamp, mini #012
				1 Elbow, plastic



Complete kit



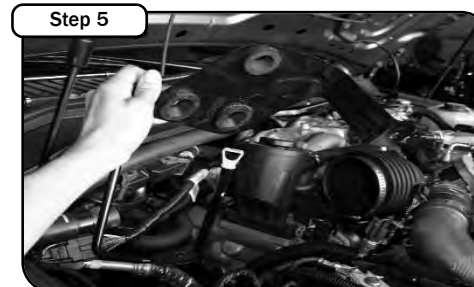
Complete stock intake.



Remove filter minder out of air box. Loosen factory clamp with 5/16" nut driver. Disconnect MAF sensor harness.



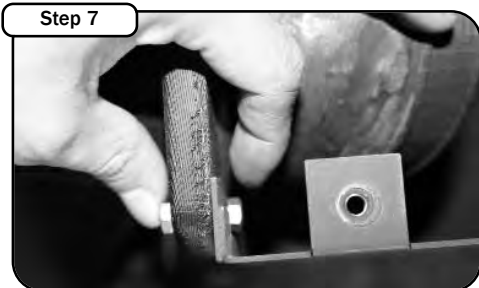
Take auxillary air line out of air box. Lift and pull firmly then remove OE air box out of vehicle.



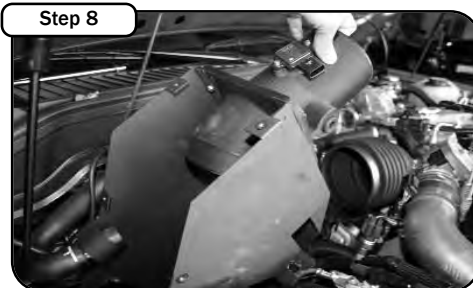
With 13 mm socket with extension, loosen the 2 bolts that hold the OE air box bracket and remove out of vehicle.



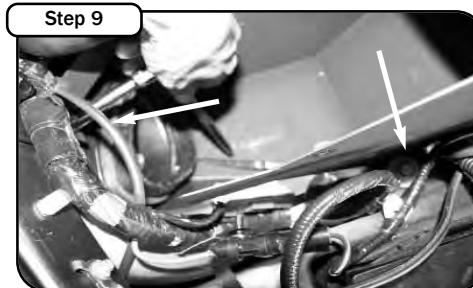
With T-20 torx bit provided loosen the two bolts holding in MAF sensor and remove. Remove grommet for filter minder. With screws and gasket provided, install MAF sensor into new intake tube. (make sure gasket is between sensor and tube) Re-install filter minder grommet into intake tube.



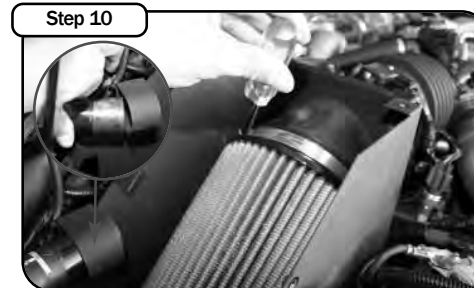
Install tube outside of housing using M6 screws, nuts and washers provided and tighten.



Install intake into vehicle. Keep tabs in position of OE air box bracket.



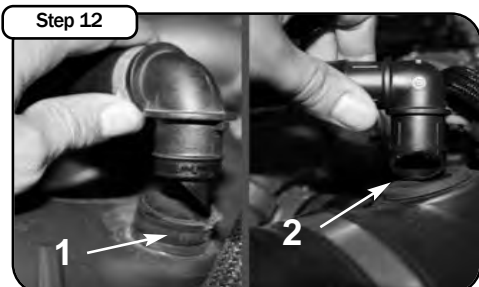
With factory screws from step 5, mount new housing and tighten with 13 mm socket.



Install air filter and tighten using 5/16" nut driver. Guide auxillary air line into the housing clip. Install aluminum cover. Use 4 button head screws and tighten using 5/32" allen key.



With 5/16" nut driver loosen both clamps on turbo and air box side.



1) With cutters or pliers, cut and remove bottom OE clamp. Pull back fitting (Early production tubes which fitting can be re-used.) 2) Later production tubes, cut upper clamp and use plastic fitting & mini clamp provided.



Install new tube with couplers and clamps provided. Tighten using 5/16" nut driver. Install grommet into tube.



Re-install crank case line into new tube. Push down completely. Re-connect MAF sensor and filter minder.



Your installation is now complete. Make sure all hoses and clamps are tight. Check and retighten connections and filter after a few hours of operation. Thank You for choosing aFe!

Note: Filter Cleaning and Re-oiling: When cleaning your aFe filter, be sure to use only aFe's "Restore Kit" (aFe P/N: 90-50001 blue oil aerosol, or aFe P/N: 90-50501 blue squeeze bottle oil or aFe P/N: 90-50000 gold oil aerosol, or aFe P/N: 90-50500 gold squeeze oil). Air Filter Replacement: P/N 24-91039 (black w/blue media) **Pro-GUARD 7™** P/N 72-90049 (black w/gold media) **Pro Dry S™** P/N 21-90049 (black w/white media) **Pro Dry S™** cleaning: see cleaning instruction sheet 06-00074