



advanced FLOW engineering™  
 P.O. Box 1719  
 Corona, CA 92878  
 Support: 951-493-7100  
 www.aFepower.com

## Intake kit Installation Instructions: 2007-2008 Toyota Tundra / 2008 Sequoia V8-5.7L Stage 2

<b>Kit P/N:</b> 51/54-11172	<b>Tools Required:</b> 10mm socket or wrench 12mm socket or wrench 5/16" nut driver Flat head screwdriver Phillips screwdriver Ratchet w/ extension 5/32" hex key 7/16" socket or wrench	<b>Parts list:</b> 1 Air filter ( <b>Pro-5R™</b> 24-90032 <b>Pro Dry S™</b> 21-90032) 1 Housing 1 Tube, intake 1 Coupler, hump 3-1/2" x 3" 1 Coupler, hump 4-1/4" x 3" 1 Adaptor, filter 5 Screw, button head M6 3 Washer, flat M6 1 Gasket, MAF	1 3/4" trim seal @ 34"L 1 Nipple, brass 3/16" x 1/8" 1 1/2"L hose @ 22"L 3 Screw, hex M6 x 1 x 12 2 Clamp, #056 2 Clamp, #072 2 Spacer, nylon 1/2"x1/4"x1/8" 1 Clamp, mini #008 2 Screws, M4 x .7 x 16
-----------------------------	--	---	--



Complete Kit w/ Parts



Step 1

Complete Stock Intake.



Step 2

Remove engine cover by grasping as shown and carefully lifting up.



Step 3

Disconnect vacuum line. Remove crankcase line out of vehicle. Disconnect MAF sensor harness.



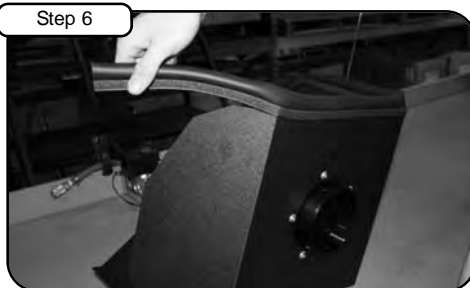
Step 4

Remove OE intake tube. Un-clip upper half of air box and remove air filter.



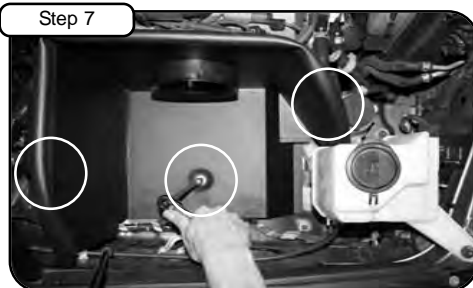
Step 5

With 12mm socket or wrench loosen the 3 bolts holding in air box. Remove complete air box out of vehicle.



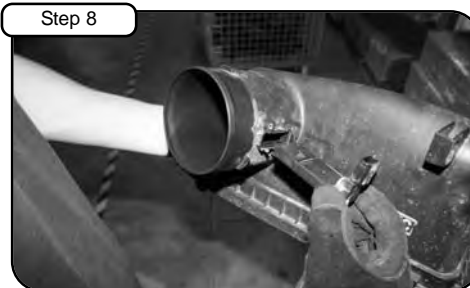
Step 6

Install filter adaptor to inside of housing using 5 button head screws with wavy washers. Tighten using 5/32 hex key. Install 3/4" trim seal to housing.



Step 7

Install housing to vehicle. Use M6 screws with flat washers provided.



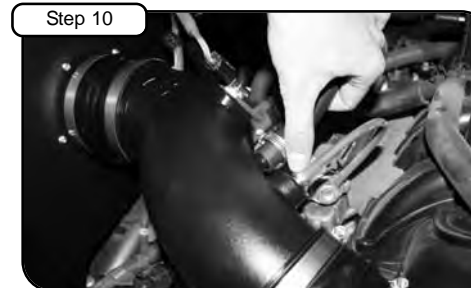
Step 8

Remove MAF sensor from stock air box.



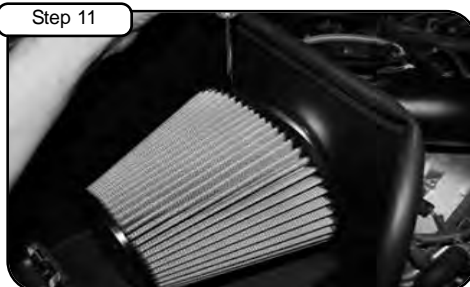
Step 9

With couplers and clamps provided install new tube into vehicle. Position tube to throttle body and housing.



Step 10

Install MAF sensor into new tube using gasket, 1/8" nylon spacers, and M4 screws provided. Install brass nipple to tube and tighten. With mini clamp install 1/2" hose to plastic fitting & tube and tighten using flat head screwdriver. Re-install vacuum line to brass fitting on tube.



Step 11

Install air filter and tighten using 5/16" nut driver.



Step 12

Tighten all clamps with 5/16" nut driver. Re-connect MAF sensor harness. Re-install engine cover.



Step 13

Your installation is now complete. Please check all bolts and clamps periodically. Re-tighten if necessary. Thank you for choosing aFe!

Note: Filter Cleaning and Re-oiling: When cleaning your aFe filter, be sure to use only aFe's "Restore Kit" (aFe P/N: 90-50001 blue oil aerosol, or aFe P/N: 90-50501 blue squeeze bottle oil).  
 Filter Replacement: **Pro-5R™** PN: 24-90032 (black w/blue media). **Pro Dry S™** P/N: 21-90032 (black w/white media) **Pro Dry S™** cleaning: see cleaning instruction sheet 06-00074.