



**advanced FLOW engineering™**  
 P.O. Box 1719  
 Corona, CA 92878  
 Support: 951-493-7100  
[aFepower.com](http://aFepower.com)

## Dynamic Air Scoop Installation Instructions: BMW '06-'11 E90/92/93 3-Series D.A.S.

Kit P/N:	54-11478	54-11818
	55-11470/1	55-11810/1
	55-11660/1	55-11880/1
Make:	BMW	
Model:	Year:	Engine:
E90(3-Series)	06-11	ALL
E92(3-Series)	07-11	ALL
E93(3-Series)	07-11	ALL

**Tools Required:**  
 Flat head screwdriver  
 Driver w/T25 torx bit

**Parts List for 54-11478, 55-11470/1, 55-11660/1:**  
 1 05-01016 Driver side D.A.S.  
 1 05-01017 Passenger side D.A.S.

**Parts List for 54-11818, 55-11810/1 for BMW 320i:**  
 1 05-01017 Passenger side D.A.S.

*Note: Installation is for D.A.S. Only!*



Complete Kit w/ Parts for 54-11478.

Step 1



**Complete Stock Configuration.** (BMW 335i model shown above. Also fits M3 model)

Step 2



Remove screws on ram air duct using T25 torx bit. (Save for later installation)

Step 3



Pull back ram air duct and remove.

Step 4



With flat head screwdriver, carefully pry and push up plastic pin.

Step 5



Remove plastic pin.

Step 6



Remove plastic clip. Repeat steps 4-6 for remaining clip. (Save for later installation)

Step 7



Lift and pull out cover.

Step 8



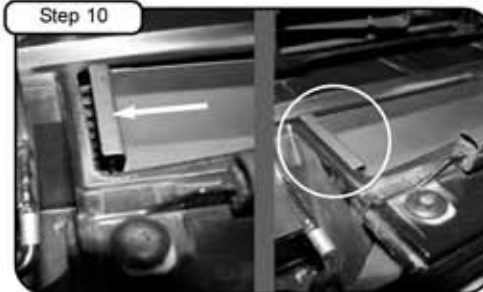
The grills are held in place with push clips. To remove, reach in behind each grill and push forward.

Step 9



Install 05-01016 Driver side D.A.S.

Step 10



Position scoop tab on plastic support as shown. (Repeat for 05-01017 Passenger side D.A.S.) With BMW 320i, only the 05-01017 Passenger side D.A.S. is installed.

Step 11



For easier installation, the next three steps will require an assistant. Have person A hold the scoops in position as shown. With BMW 320i, only the passenger side (p/n 05-01017) is installed.

Step 12



Have person B re-install the cover and secure with plastic pin clips that were removed earlier. (See steps 4-6)

Step 13



**Detail of properly installed plastic pin clips.** Make sure pin clips are through hole on scoops allowing to secure and hold in place!

Step 14



Re-position ram air duct from step 3. Secure using the 2 screws from step 2 and tighten using T25 torx bit.

Step 15



Your completed D.A.S. installation will look like this. Check and make sure they are secure. Re-install grills by lining up tabs and pushing them in until they snap into place. Thank you for choosing aFe!