



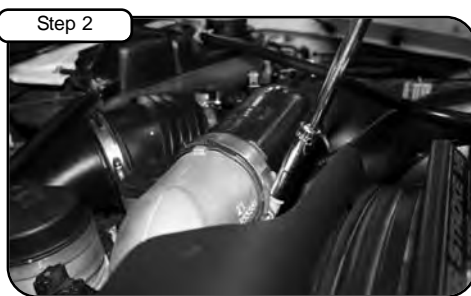
advanced FLOW engineering™  
 P.O. Box 1719  
 Corona, CA 92878  
 Support: 951-493-7100  
 aFepower.com

## BladeRunner™ Charged Air Manifold Installation Instructions: 2005-2007 Ford Power Stroke V8-6.0L (td)

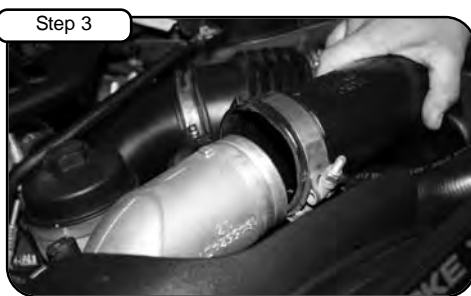
<b>Part Number:</b> 46-10041	<b>Tools Required:</b> 7/16" socket or wrench 10mm socket or wrench 8mm socket or wrench Torque wrench Ratchet w/ extension 3/16" allen key	<b>Parts list:</b> 1 Manifold, Charged Air 1 Screw, hex head M6 x 1.00 x 25 2 Screw, hex head M6 x 1.00 x 100 1 Stud, double end M6 x 25 1 Screw, hex head M6 x 1.25 x 12 1 Seal ring	4 Washer, flat M6 2 Plug, 1/8" NPT 1 Threadlocker, blue 1 Washer, flat M8 2 Nut, hex M6 x 1.00
---------------------------------	---	---	--



Stock Intake Manifold.



With a 7/16" socket and ratchet, loosen the intercooler tube hose clamp.



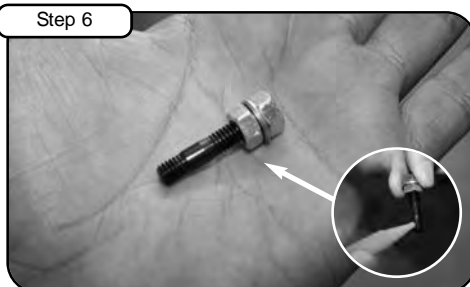
Pull back clamp.



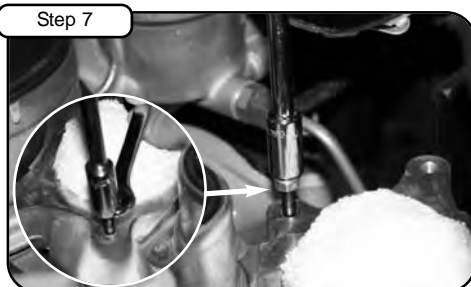
With 8mm socket and extension loosen 4 screws holding in manifold.



Pull back manifold screw away from fan shroud and remove manifold.



Place M6 washer between 2 hex nuts at long threaded end of stud and tighten.



Apply threadlocker and install stud into mounting hole on drivers side toward rear of vehicle. Loosen and remove nut and washer. See Notes 1, 2 & 5.



Install 1/8" NPT plugs to back of manifold. Tighten using 3/16" allen key. Attach new seal ring to bottom of manifold. Install new aFe BladeRunner manifold to vehicle. See Notes 2 & 3.



With nut and washer provided tighten loosely on manifold screw from step 7.



Install and secure manifold using 2 M6 x 1.00 x 100 screws and washers provided and tighten loosely.



Using M6 x 1.00 x 25 screw and washer secure last remaining manifold mount and tighten. Tighten all screws and nuts using 10mm socket or wrench. See Notes 2 & 5.



Attach screw through fan shroud hole and tighten to manifold. See Notes 2 & 5



Re-attach intercooler tube to manifold.



Tighten clamp using 7/16" nut driver. See Notes 2 & 4.



Your installation is now complete. Please check all screws periodically. Re-tighten if necessary. Thank you for choosing aFepower!

Notes: 1) Use provided Threadlocker (P/N 03-50162) on all screws. 2) DO NOT over-tighten screws. Please tighten to correct torque spec(s). advanced FLOW engineering™ is not responsible for improper install. 3) Apply 62 in. lbs. torque. 4) Apply 75 in. lbs. torque. 5) Apply 10 ft. lbs. torque.