



advanced FLOW engineering™
 P.O. Box 1719
 Corona, CA 92878
 Support: 951-493-7100
 aFepowersports.com

Intake Kit Installation Instructions: 2004-2007 YAMAHA Rhino 660cc Stage 2 Cx

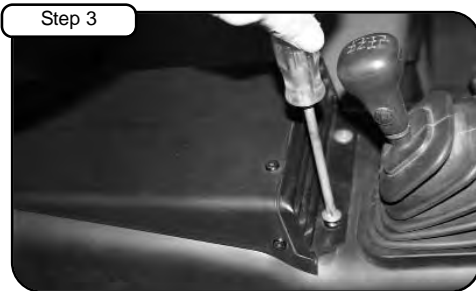
Kit P/N: 85-10014	Tools Required: 5/16" nut driver 12mm socket w/ extension and ratchet 12mm open/box end wrench 1/4" nut driver Phillips screw driver 4mm allen key	Part List: 1 Air Filter P/N (ProGUARD 7™ 72-25507) 1 Air Filter Bonus P/N (ProGUARD 7™ 21-25507) 1 Cover Filter Replacement P/N (Pro Dry S™ 81-90005) 1 Mini Crank Case Filter P/N (Pro Dry S™ 18-00751) 1 CVT Filter P/N (Pro Dry S™ 18-09001) 1 Housing, Intake 1 Aluminum Intake Cover 1 Fitting, Tube Coupling	2 Clamp, #044 1 Coupling, Straight (05-00570) 2 Grommet 1 1/2" ID Hose @ 9" L 2 Clamp, Mini #006 1 Screw, Cross Top M6x1x.6
Make: Yamaha			
Model: Rhino	Year: '04 -'07	Engine: 660cc	
<i>aFe requires jetting for this application!*</i> <small>*aFe dyno tests done with 195 main jet w/ stock exhaust @ sea level.</small>			



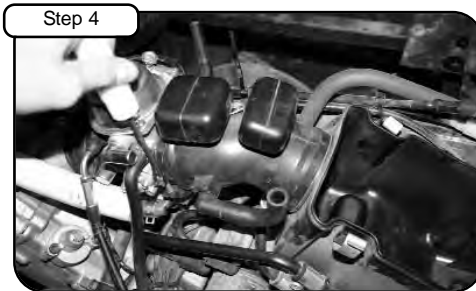
Complete kit with parts.



Complete stock intake. Remove both seats and begin installation.



With phillips screw driver, loosen the 2 bolts that hold in OE intake cover and remove. Remove engine cover.



Un-clip the upper half of airbox and remove. Loosen the OE intake tube at Carburetor with 4mm allen key. Remove all vacuum lines attached to airbox.



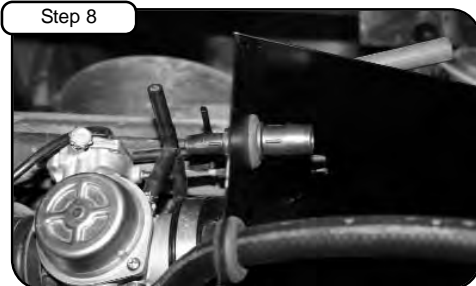
Remove the two plastic tabs holding in front of OE airbox, and save for later use. Remove complete OE airbox from Rhino.



With grommets provided, place into holes in housing. Install plastic hose fitting in right side of housing.



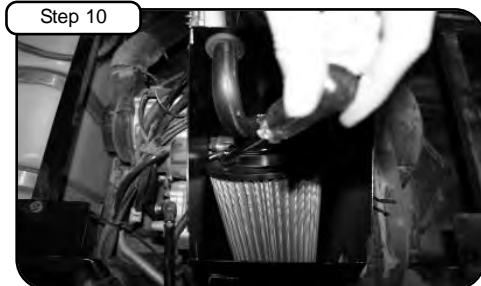
Loosen shifter bracket bolt with 12mm socket or wrench. Take bolt out and set aside for later use.



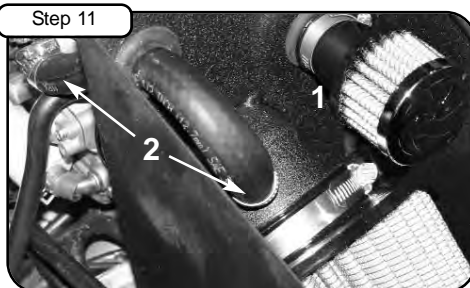
Place provided coupler (05-00570) with clamps on to housing and install housing in to Rhino. Do not tighten. Re-install supplied 1/2" vacuum line and run through housing. Install grommet(s) and plastic tube fitting into housing.



Re-tighten 12mm bolt from step 7 through housing tab and also Re-insert plastic tabs into new housing. Tighten clamps at coupler with 5/16" nut driver.



Install air filter into housing and tighten using 5/16" nut driver.



1) Install mini crank case filter (18-00751) on to plastic tube fitting and tighten clamp using 1/4" nut driver.
 2) Install 1/2" hose w/ mini clamps through housing to steel fitting and carburetor. Tighten using 1/4" nut driver.



Re-install engine housing cover.



Install flat panel dry filter into cover. Tighten filter retainer bolt to cover. Tighten down aFe cover to engine housing cover using OE screws using phillips screw driver.



Remove front driver seat and install transmission CVT filter(18-09001) tighten using 5/16" nut driver. (CVT and mini crank case filter require no oil)



Your installation is now complete. Check **all clamps** and hoses periodically. Thank you for choosing aFe!