



takeda by aFe

Installation

Kit P/N:

TA-6002B

Make:

Volkswagen

Model:

Jetta/ Rabbit MKV '06-'09

Year:

Engine:

L5-2.5L

Parts Identification:

- 1 Air filter (*Pro Dry S™* TF-9003D)
- 1 Intake tube, wrinkle black 05-T6002B1
- 1 Intake tube, wrinkle black 05-T6002B2
- 2 Coupling, straight 05-00664
- 1 Coupling, reducer 05-00636
- 5 Clamp #048
- 1 Clamp #052
- 1 Smog Pump Adaptor
- 1 Crank Case Adaptor
- 1 Bracket, temp sensor
- 1 Pre-Filter

Tools Required:

- 10mm socket or wrench
- Ratchet w/ extension
- Phillips screw driver
- Flat head screw driver
- 5/16" nut driver
- 4mm allen key
- Pliers

Note: Read instructions before installation and have tools ready.



With an allen wrench, Unscrew both screws holding the ram air duct into place.



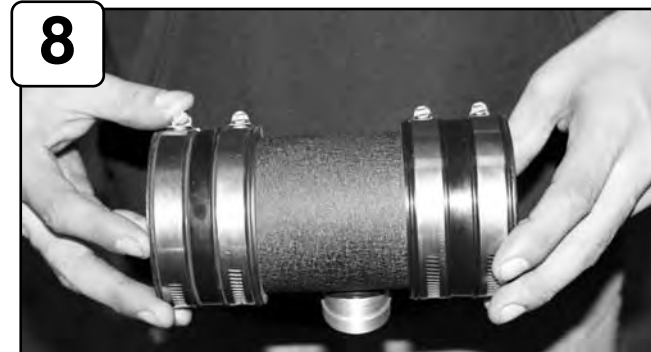
Install both grommets onto your takeda intake tube then firmly press in both smog pump adapters.



Complete Stock intake. Please disconnect battery terminals before installation. Be sure to have your radio security code (if applicable) in order to access your previous settings.



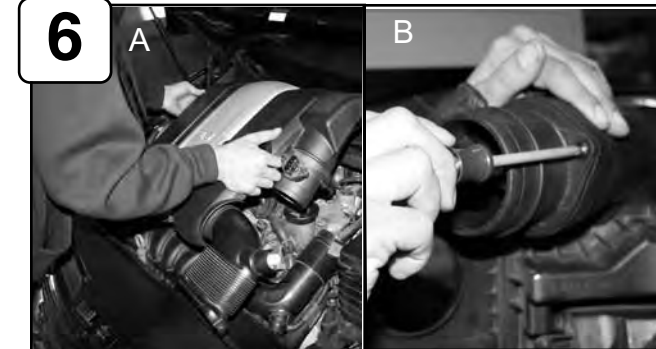
Using pliers, squeeze the pressure clamp open and pull the factory tube off the mas sensor tube.



Attach both couplings onto the intake tube as shown.



Disconnect MAF sensor and crank case line.



A. Remove the engine cover by pulling up from the back side near the firewall and working the cover loose. Then pull up on the front side.
B. Once the engine cover is off remove the two screws holding the MAS sensor tube onto the engine cover.



Disconnect both smog pump adapters.



takeda by aFe

Accessories



Replacement Filter P/N:
TF-9003D



Pre Filter P/N:
TP-7011B

Note: Filter Clean When cleaning your **Pro Dry 5™** filter, be sure to use only "Restore Kit" (Takeda P/N: TP-7016C **Pro Dry 5™** cleaner only.)

Pro Dry 5™ cleaning:
see cleaning instruction sheet TF-9000I.

For replacement part(s) or "Restore Kit" please log on to takedausa.com
P.O. Box 1719 Corona CA, 92878

10



Using pliers, Disconnect the intake tube from the throttle body and remove from vehicle.

11



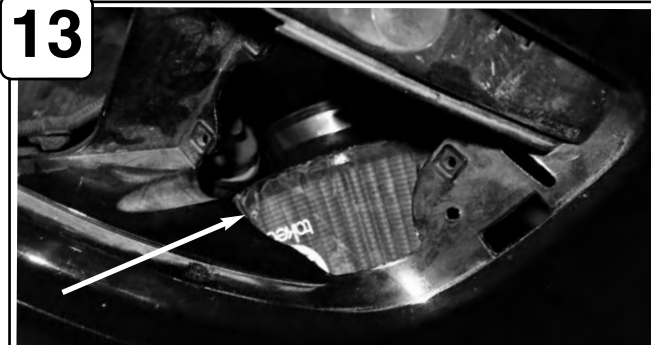
From underneath vehicle, remove drivers side splash shield push clips and insert your air filter as seen in step 13 and re-install push clips.

12



Remove your drivers side fog light duct using a phillips screw driver and pop the fog light cover off. Note: this will allow you to access the air filter to tighten onto the intake tube.

13



Position air filter like shown.

14



Attach the intake tube to the throttle body and connect both smog pump adapters. Tighten clamps

15



Attach the MAF sensor to your takeda intake tube and position the MAF sensor like shown. This is **very important** to follow. If the sensor is not in the position as shown, it could cause a check engine light to occur.

16



Install the takeda intake tube into the vehicle attaching it to the MAS sensor tube. Using the grommet on the tube, pressure fit the tube on the mount shown. Once everything is in the desired position, tighten all clamps.

17



Connect the air filter to the intake tube using a 5/16" nut driver. Reinstall your fog light and engine cover when completed.

18



The installation of your Takeda performance intake is now complete. Please check all components and re-tighten if necessary. Thank you for choosing Takeda!