



# INSTALLATION INSTRUCTIONS

MAKE: GM

MODEL: Diesel Trucks

YEAR: 2015.5-2016

ENGINE: V8-6.6L

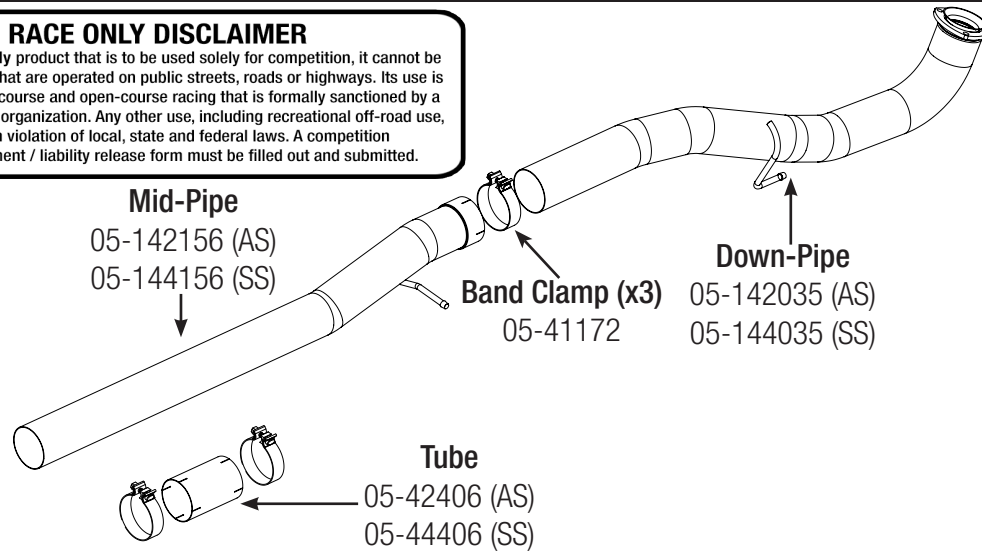
FITS: CC/SB 153.7"WB , CC/LB 167.7"WB, EC/SB 144.2"WB, EC/LB 158.2"WB, SC/LB 133.7"WB

**4" Race-Pipe**  
**49-04067 (Aluminized)**  
**49-44067 (Stainless)**

## RACE ONLY DISCLAIMER



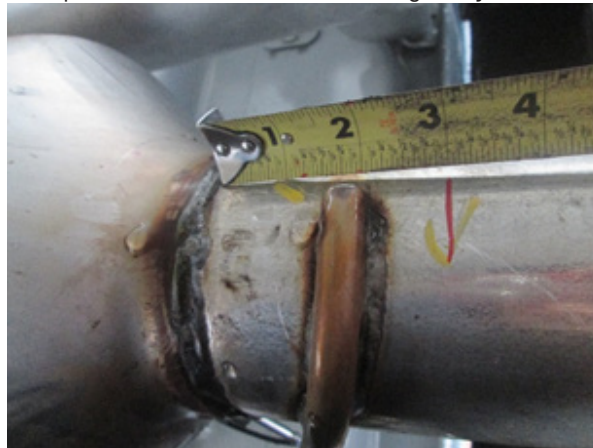
This is a Race Only product that is to be used solely for competition, it cannot be used on vehicles that are operated on public streets, roads or highways. Its use is limited to closed-course and open-course racing that is formally sanctioned by a recognized racing organization. Any other use, including recreational off-road use, could be in violation of local, state and federal laws. A competition acknowledgement / liability release form must be filled out and submitted.



**Caution:** Allow time for your vehicle to cool down prior to installation. When working on or under your vehicle proceed with caution. Exhaust systems reach high temperatures and may cause serious burns. Wear protective safety equipment; eye goggles and gloves to ensure a safe installation.

**Step 1:** (Read Instructions prior to installation) remove the stock exhaust from the rear of the truck working your way forward. Take caution not to damage the factory isolation mounts as they will be reused. Disconnect all factory sensors and airlines first. Take caution not to damage any sensors. It's also recommended not fully tighten any clamps until the entire system has been installed.

**Step 2:** For faster installation spread the pieces of the aFe exhaust alongside your vehicle according to the diagram shown.



**Please note:** Cutting the Stock exhaust will be required for this installation. It is highly recommended that this procedure be done by a certified and trained professional using proper tools needed.

**Step 3:** Using a visible ink; measure 3" inches back from the rear weld of the DPF (Diesel Particulate Filter) and place a mark, this is for all WB CONFIGURATIONS. (As shown in Figure A); the mark will indicate your cut location. Ensure the measurement is accurate and the mark is clearly visible.

**Step 4:** Remove your rear cut section of the over-axle tail pipe from the vehicle to allow room for any movement during installation.

**Step 5:** Remove DPF and Catalytic converter downpipe from vehicle using Jack/Stands for support when removing.

**Step 6:** Install aFe exhaust Down-Pipe followed by the DPF delete Mid-Pipe to the stock tailpipe cut section.

**Step 7:** Slip the 6" adapter over the cut section of your stock tailpipe and over the DPF Delete tube with the 4" band clamps provided in the kit.

**Step 8:** Begin to align all exhaust components and fully tighten down all band clamps.

**Step 9:** Your installation is now complete. It is recommended to re-tighten all exhaust components after 50-100 miles.

**NOTES:** aFe recommends that the tailpipe be at least 1/2"-1" away from any body panels to avoid heat related body damage. **Tighten and secure.**

**Caution:** Allow time for your vehicle to cool down prior to installation. When working on or under your vehicle proceed with caution. Exhaust systems reach high temperatures and may cause serious burns. Wear protective safety equipment; eye goggles and gloves to ensure a safe installation. **aFe recommends professional installation on our products.**