



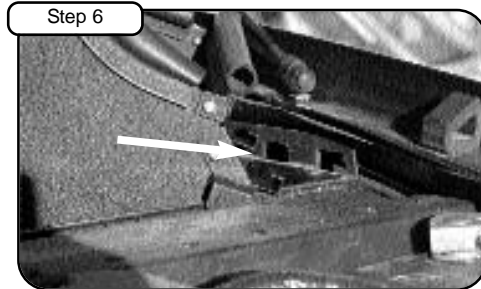
advanced FLOW engineering™  
P.O. Box 1719  
Corona, CA 92878  
Support: 951-493-7100  
aFepower.com

# Intake Kit Installation Instructions: 1999.5-2003 Ford F-Series Super Duty/Excursion V8-7.3L (td)

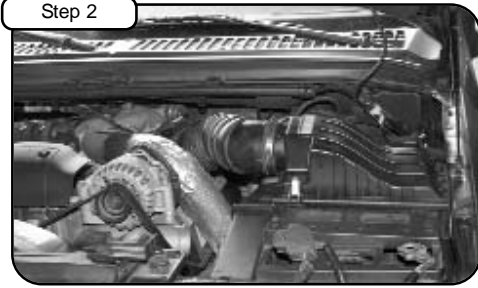
Kit Part #:	51-10061-1 54-10061-1 75-10061-1	Tools Required	Part List
Make:	Ford	5/16 nut driver or socket Flathead screwdriver	1 Air Filter Replacement P/N ( 24-40035 Pro GUARD 7 72-40035 or Pro Dry S 21-40035 )
Model:	F-250 '99.5-'03 F-350 '99.5-'03 F-450 '00-'03 F-550 '01-'03 Excursion '00-'03		1 Air filter housing 1 Housing splash guard 4 #8-32 Phillips screws 1 #006 Hose clamp 1 1.5" X 1/2" Hose 1 Trim seal 3/4" (35")



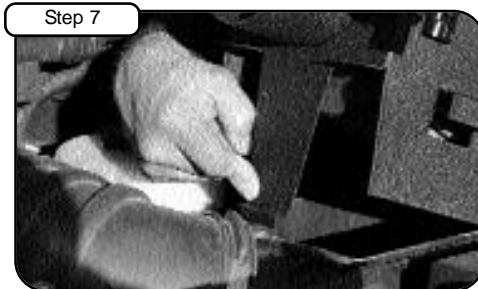
**Complete kit components**



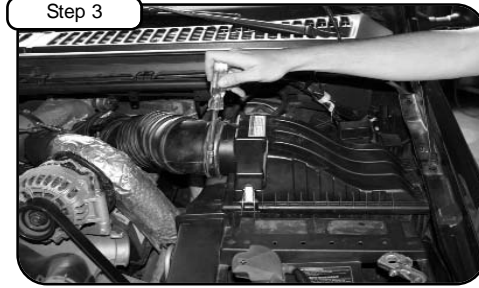
Take kit and insert tabs of splash panel into slots on the lower half of OE housing at an angle. (Tabs are to be inserted into and rest on the bottom edge of slots. Do not hook tabs over plastic.



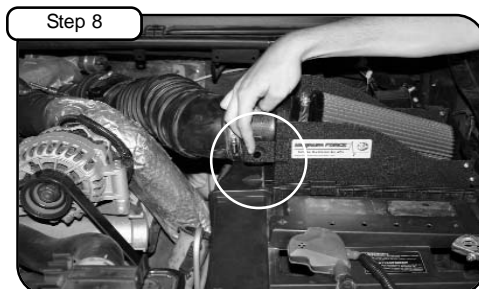
**Complete Stock Intake.**  
*Disconnect battery before install.*



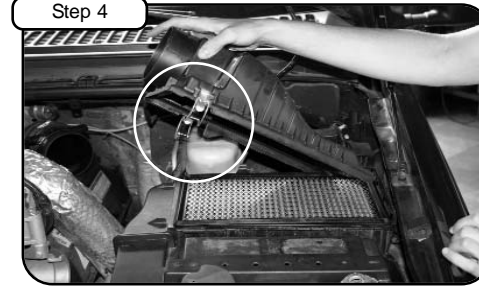
Depress spring tab slightly and lower the filter housing down into OE housing until the spring tab snaps into place.



Remove the upper portion of the air box by loosening the hose clamp on the air box. Carefully remove the air filter minder on the side of the air box.



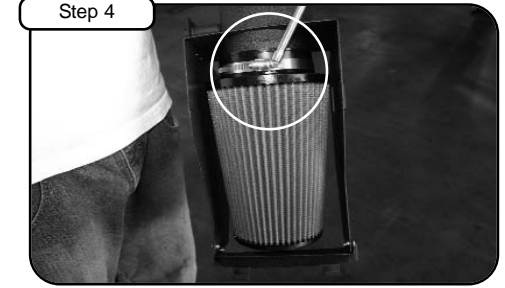
Insert the 1.5" hose into the nipple on the side of the housing. The filter minder will be placed here.



Loosen the air box lid clamps and remove air box lid and OEM air filter.



Your aFe intake installation is now complete. Make sure all clamps are tight and that all electrical components are secure. Check and tighten connections after a few hours of operation. Thank you for choosing aFepower!



Place the new air filter inside the new housing and tighten the clamp. Next attach the front splash guard to the front of the housing. Secure with the provided screws.

**Place enclosed CARB EO sticker on a clean/smooth surface on or near the intake system. EO identification label is required in passing the Smog Check inspection.**