



P.O. Box 1719  
 Corona, CA 92878  
 Support: 951-493-7100  
 www.aFeFilters.com

# Intake Kit Installation Instructions: '02-'05 Chevrolet Trailblazer/ GMC Envoy/ Oldsmobile Bravada L6-4.2L

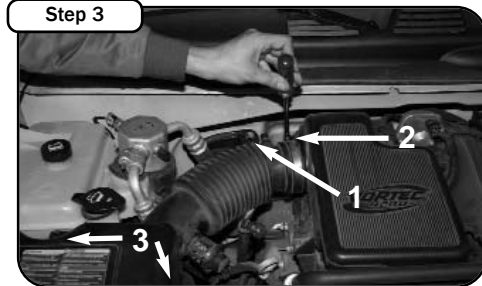
<b>Kit Part #</b>	54-10872	<b>Tools Required:</b>	<b>Part List:</b>	6 Washer, Flat M6
<b>Make:</b>	Chevrolet	5/16" nut driver	1 Air Filter (replacement # 24-40011)	4 Washer, Wavy
<b>Model:</b>	<b>Year</b> <b>Engine</b>	Slotted screwdriver	1 Intake Tube	4 Button Head Screws M6x1x12
Trailblazer	'02-'05      L6-4.2L	10mm socket or wrench	1 Intake Housing	
<b>Make:</b>	GMC	Ratchet and extension	1 Housing Cover	<b>Additional parts for "air injection" supply hose.</b>
<b>Model:</b>	<b>Year</b> <b>Engine</b>		1 Air Temp. Sensor Grommet	1 Elbow 1"
Envoy	'02-'05      L6-4.2L		1 Coupler 3-1/2"Dx3"L	1 Grommet 1" ID
<b>Make:</b>	Oldsmobile		2 Clamps #056	1 Clamp #016
<b>Model:</b>	<b>Year</b> <b>Engine</b>		4 Screw M6x1x25	
Bravada	'02-'04      L6-4.2L		2 Nut M6x1	



**Step 1**  
 Complete kit. Please make sure you have all the components listed prior to beginning your installation.



**Step 2**  
 Complete stock intake.



**Step 3**  
 (1) Disconnect the MAF sensor. (2) Loosen the intake manifold clamp. (3) Remove the two screws holding the air box housing in place. \*Models with "air injection" hose unplug from intake tube.



**Step 4**  
 Remove the air box housing. (1) Remove the stock air filter.



**Step 5**  
 Remove the air tube.



**Step 6**  
 Slip the coupler over the intake manifold and secure with a clamp.



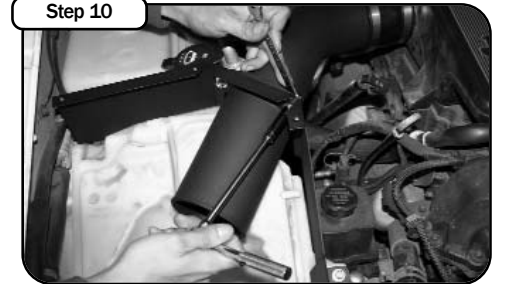
**Step 7**  
 Insert the "air temp. sensor grommet" into the aFe air intake tube



**Step 8**  
 Insert the aFe air intake tube into the coupler on the intake manifold. Once in position secure the tube using a clamp.



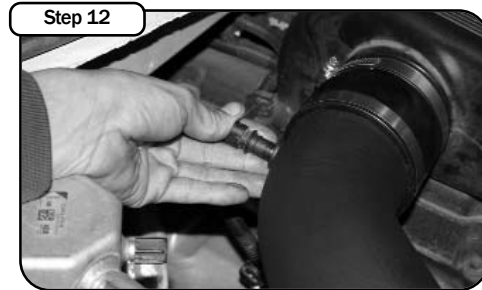
**Step 9**  
 Fit the aFe housing over the intake tube. Using 2 screws, washers and lock washers secure the housing in the engine compartment.



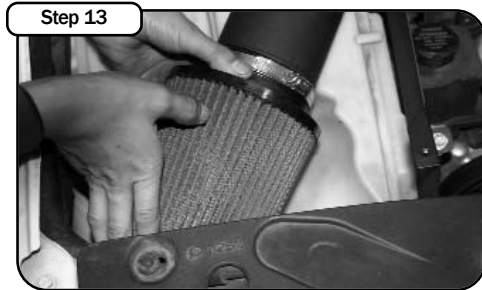
**Step 10**  
 Next using the 2 longer screws, 2 washers each, wavy washer and bolts. Fasten the housing onto the intake tube.



**Step 11**  
 Remove the air temp. sensor from the OEM intake tube.



**Step 12**  
 Insert the air temp. sensor into the aFe intake tube. Re-connect the air temp. sensor plug.



**Step 13**  
 Install the new aFe air filter onto the intake tube and secure.



**Step 14**  
 Position the housing cover and secure in position using 4 button head screws. Your installation is now complete. Make sure you tighten all clamps and check all electrical connections. Re-check periodically.

Place enclosed CARB EO sticker on a clean/smooth surface on or near the intake system. EO identification label is required in passing the Smog Check inspection.

If your vehicle is equipped with an "air injection" supply hose.

**Please refer to page 2 for further instructions.**

Note: Filter Cleaning and Re-oiling: When cleaning your aFe filter, be sure to use only aFe's "Restore Kit" (aFe P/N: 90-50001 blue oil aerosol, or aFe P/N: 90-50501 blue squeeze bottle oil or aFe P/N: 90-50000 gold oil aerosol, or aFe P/N: 90-50500 gold squeeze oil).  
 Filter Replacement: Magnum FLOW PN: 24-40011 (black w/blue media).



P.O. Box 1719  
 Corona, CA 92878  
 Support: 951-493-7100  
 www.aFeFilters.com

## Page 2 "Air Injection" Supply Hose Installation Instructions

<b>Kit Part #</b>	54-10872	<b>Tools Required:</b>	<b>Part List:</b>
<b>Make:</b>	Chevrolet	1/4" nut driver	1 Elbow 1"
<b>Model:</b>	<b>Year</b> <b>Engine</b>	1 3/8" Spade Bit	1 Rubber Grommet 1" ID
Trailblazer	'02-'05      I6-4.2L	Drill	1 Clamp #016
<b>Make:</b>	GMC	Wire Cutters	
<b>Model:</b>	<b>Year</b> <b>Engine</b>	Long nose pliers	
Envoy	'02-'05      I6-4.2L		
<b>Make:</b>	Oldsmobile		
<b>Model:</b>	<b>Year</b> <b>Engine</b>		
Bravada	'02-'04      I6-4.2L		



**Step 1**  
 Complete kit. Please make sure you have all the components listed prior to beginning your installation.



**Step 2**  
 Using wire cutters remove the factory metal clamp from the air injection hose.



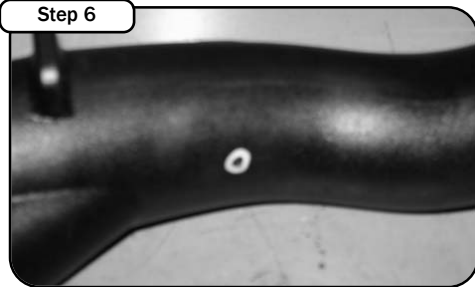
**Step 3**  
 Remove the vent tube connector from the air injection hose.



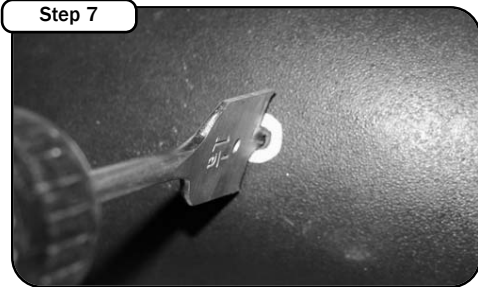
**Step 4**  
 Using the #12 clamp and supplied vent elbow, secure onto the air injection hose.



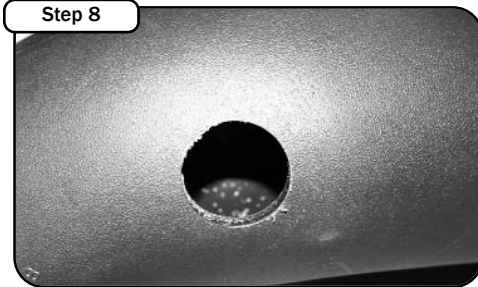
**Step 5**  
 Position the elbow so it sits inline under the intake tube. Mark the center of the location.



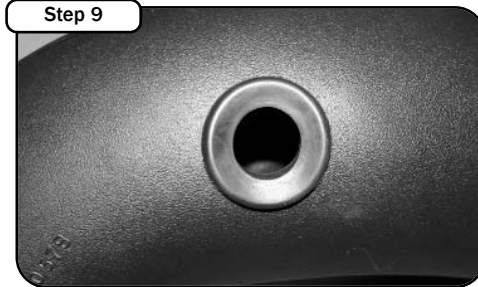
**Step 6**  
 Now with the center marked, remove the aFe intake tube.



**Step 7**  
 Using a 1 3/8" spade bit drill out a hole where you made your mark.



**Step 8**  
 Remove the debris from the intake tube.



**Step 9**  
 Insert the grommet so that its sits securely in the hole.



**Step 10**  
 This is a sample photo of how the elbow should be inserted into the aFe intake tube.



**Step 11**  
 Now that your hole is drilled re-install the aFe intake tube and insert the elbow. Your installation is now complete. Make sure you tighten all clamps and check all electrical connections. Re-check periodically.