



P.O. Box 1719
 Corona, CA 92878
 Support: 951-493-7100
 www.aFeFilters.com

Intake Kit Installation Instructions: 2003-2007 Nissan 350Z V6-3.5L Stage 2 Cx

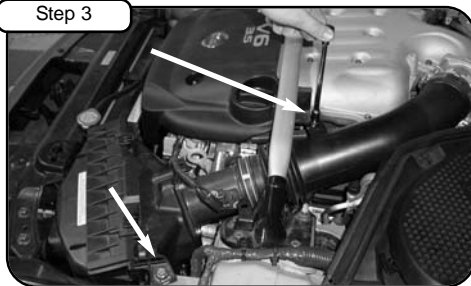
Kit Part #	51/54-11372		Tools Required:	Part List:	1) Clamp #072
Make:	Nissan		5/16" nut driver	1) Air filter P/N (24-55505, or Pro Dry S 21-55505)	1) 7/16" trim seal @ 20"L
Model	Year	Engine	10mm socket w/ extension and ratchet	1) Intake tube	2) Spacers, nylon 1/8"
350Z	2003-2007	V6 - 3.5L	12mm socket w/ extension and ratchet	1) Housing	2) Screws M4 x .7 x 16"
			Flat head/slotted screwdriver	1) Adapter, filter	1) Gasket, MAF sensor
			Phillips screwdriver	1) Coupling, straight 3" x 2"L	3) Washers, wavy M6
				1) Coupler, reducer 4-1/4" x 3-1/2"	3) Screws, button Head M6
				1) Clamp #060	
				2) Clamp #052	



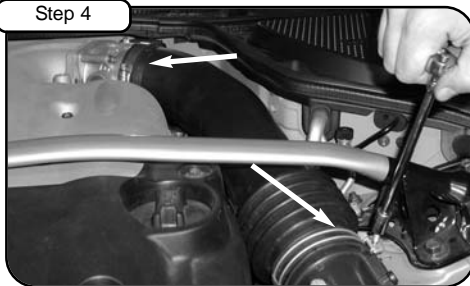
Complete kit with parts.



Complete stock intake.



Remove stock intake with 10mm socket. With 10mm socket remove the 2 bolts holding in OE airbox. Disconnect the MAF sensor harness. Save 1 bolt.



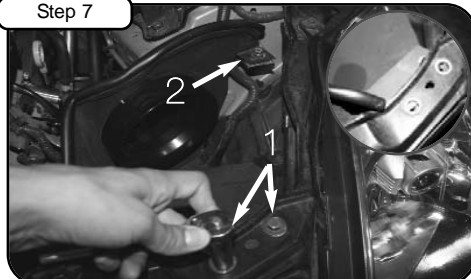
With 10mm socket, loosen the two clamps holding in OE intake. Remove crank case breather from intake tube. Remove Intake tube.



Carefully lift, and remove OE airbox out of vehicle.



Install 7/16" trim seal to housing. Install filter adapter to housing using button head screws and washers provided.



1) Loosen the 2, 12mm bolts on radiator support, place new housing into vehicle. (guide housing tabs into slot between radiator support and OE ram air) Re-Tighten the two bolts. 2) Place bolt from step 3, and tighten using 10mm socket.



Remove MAF sensor from OE airbox using phillips screwdriver. Re-install to new aFe tube with hardware provided (make sure gasket and nylon spacers are between tube and sensor) using flat head screwdriver.



Place coupler reducer on filter adapter with clamps provided, and install tube under OE strut tower bar, keep loose to allow repositioning.



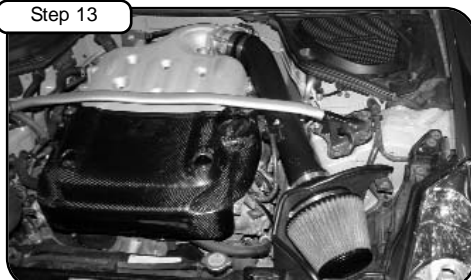
Re-install crank case breather to new tube.



Install straight coupler to throttle body with clamps provided, and tighten all clamps with 5/16" nut driver. Re-connect MAF sensor harness.



Place high FLOW filter into housing and tighten using 5/16" nut driver.



Your installation is now complete. Check all clamps and hoses periodically. Thank you for choosing aFe!

Note: Filter Cleaning and Re-oiling: When cleaning your aFe filter, be sure to use only aFe's "Restore Kit" (aFe P/N: 90-50001 blue oil aerosol, or aFe P/N: 90-50501 blue squeeze bottle oil)
 Filter Replacement: Magnum FLOW PN: 24-55505 (black w/blue media) or Pro Dry S P/N 21-55505 (black w/white media) Pro Dry S cleaning: see cleaning instruction sheet 06-00074