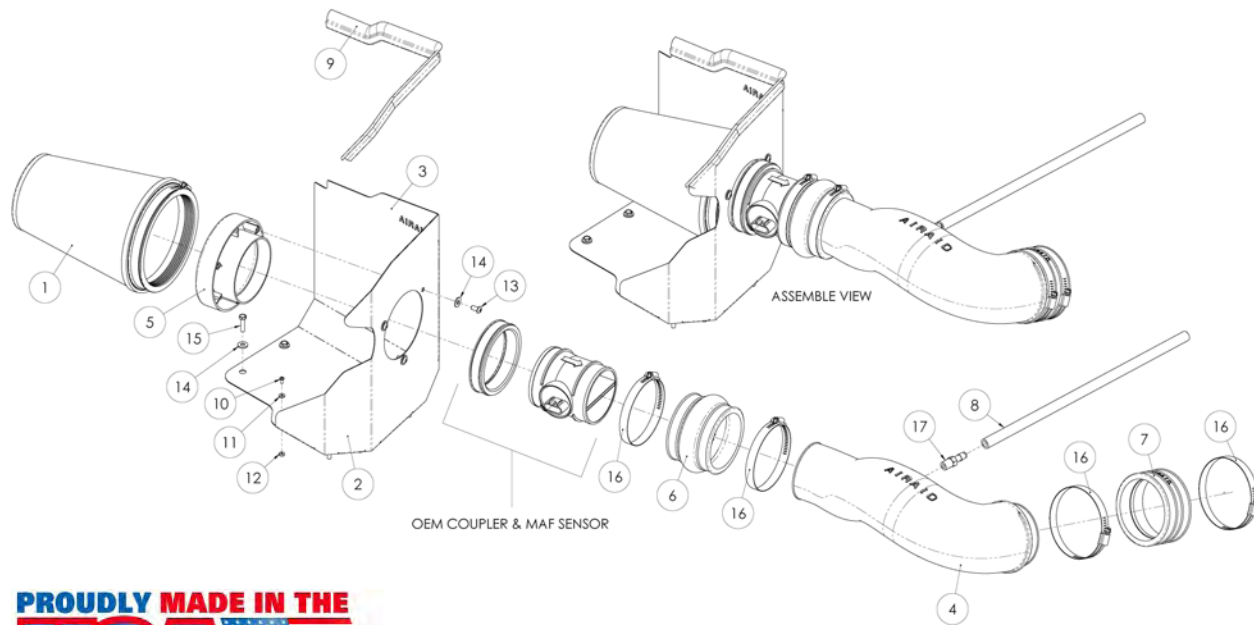


# AIR AID®

## INTAKE SYSTEMS

**Installation Instructions**  
**Part Number 200-197**  
**2007-08 Chevrolet Silverado 1500**  
**Tahoe/Suburban/Avalanche/**  
**GMC Sierra 1500**  
**Yukon/Yukon XL**  
**Denali/Denali XL**  
**Cadillac Escalade/ESV/EXT**  
**4.8L, 5.3L, 6.0L, 6.2L V-8**  
**\*GMT-900 Body Style Only\***  
**\*With Electric Cooling Fans Only\***



**Packing List:**

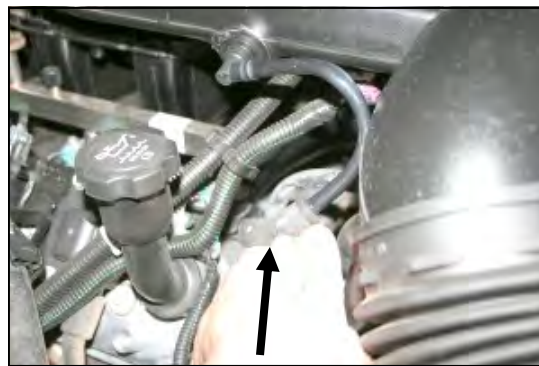
|     |               |                              |   |
|-----|---------------|------------------------------|---|
| #1  | 700-469       | Airaid Premium Filter        | 1 |
| #2  | KIT196MAFDC   | MAF Panel                    | 1 |
| #3  | KIT196RRDAMC  | Rear Air Dam Panel           | 1 |
| #4  | KIT996T       | Airaid Intake Tube           | 1 |
| #5  | KIT1121MAFADA | Filter Adapter               | 1 |
| #6  | KITHUMPHS18   | Urethane Hump Hose           | 1 |
| #7  | KITCOUPLER10  | Urethane Coupler             | 1 |
| #8  | KITHOSE06     | 3/8" x 14" Breather Hose     | 1 |
| #9  | KITWSTRIP02   | Weather Strip 20 3/4"        | 1 |
| #10 | KIT197HP      | Hardware & Instructions      | 1 |
| #11 | KIT6C31MXPPZ  | 6-32x 5/16" Screw            | 5 |
| #12 | KIT6NWSAPZ    | #6 Flat Washer               | 5 |
| #13 | KIT6CNKEPZ    | 6-32 Keps Nut                | 5 |
| #14 | KIT15DHC3050  | 1/4"-20x1/2" Button Head     | 3 |
| #15 | KIT09FWZ019   | 1/4" Flat Washer             | 7 |
| #16 | KIT60C250HCS  | M6x1.25 Hex Bolt             | 4 |
| #17 | KITHS64       | #64 Hose Clamp               | 4 |
| #18 | KITFITTING01  | 1/4" NPT x 3/8" Barb Fitting | 1 |

### Tools Required For Installation:

5/16", 10mm Sockets  
 Ratchet & Extension  
 Phillips Screwdriver  
 5/32" Allen Wrench



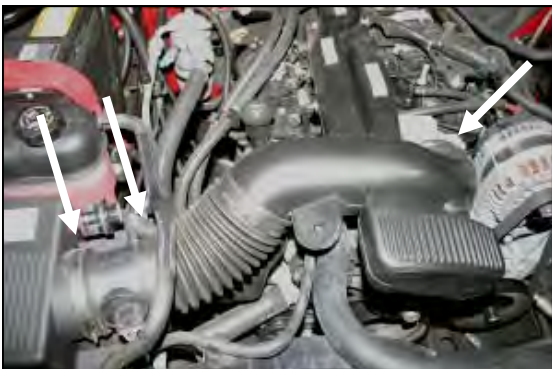
**1. Disconnect the negative battery cable.** Remove the factory beauty cover by lifting up on the front, and then pulling the cover towards the front of the vehicle. It is only held in place by grommets.



**2.** Disconnect the factory breather hose at the valve cover.



**3.** Separate the factory intake tube from the plastic clamp that secures the radiator hose to the tube. A firm downward push will usually do it.



**4.** Loosen three hose clamps. One at each end of the factory intake tube, and one on the Mass Air Flow sensor (MAF) where it clamps to the factory airbox.



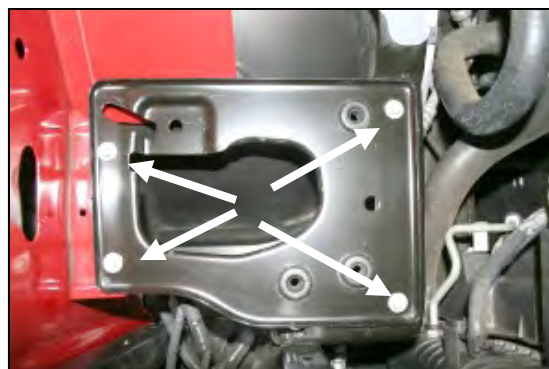
**5.** Slide the factory intake tube off of the MAF sensor, rotate it up so that it disengages from the mounting grommet on the intake manifold, and then slide it forward off of the throttle body and remove it from the vehicle.



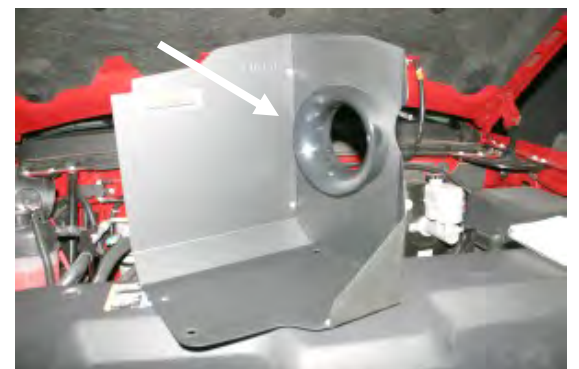
**6.** Remove, and set aside the MAF sensor from the factory airbox using caution to retain the factory clamp and seal.



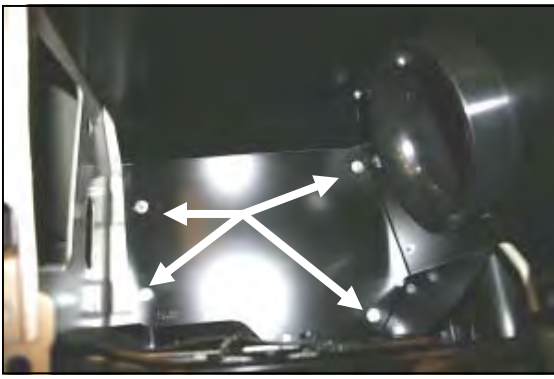
**7.** Rock the factory airbox back and forth to loosen it from the mounting grommets, and remove it from the vehicle.



**8.** Using a 10mm socket, remove four bolts, and then remove the factory airbox mounting plate from the vehicle.



**9.** Assemble the Cool Air Dam panels (CAD) (#2 & #3) using five 3/16" screws (#10), washers (#11), and nuts (#12). Next install the filter adapter into the panels as shown using three 1/4" button head bolts (#13), and flat washers (#14).



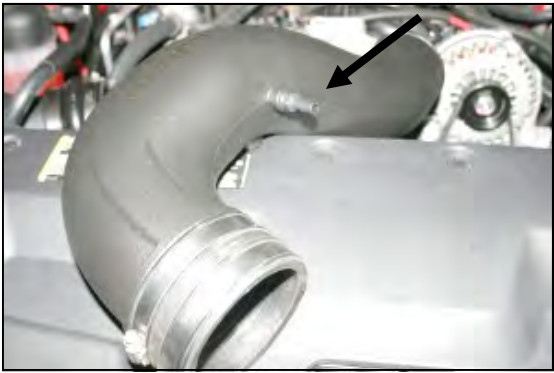
**10.** Install the Airaid CAD into the vehicle replacing the factory airbox. Secure the CAD using four 6mm bolts (#15), and flat washers (#14). Do not over tighten the four bolts.



**11.** Reinstall the MAF sensor onto the filter adapter, and tighten the clamp.



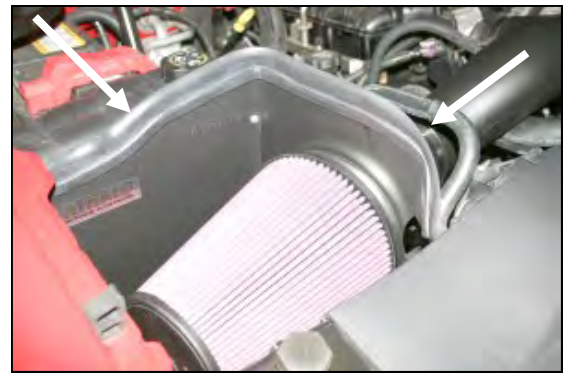
**12.** Install the hump hose (#6), and two #64 hose clamps (#16) onto the MAF sensor as shown. Tighten only the clamp on the MAF sensor at this time.



**13.** Install the 3/8" barbed fitting (#17) into the Airaid Intake Tube as shown. Next install the urethane coupler onto the throttlebody end of the tube using two #64 hose clamps (#16). Tighten only the clamp on the tube.



**14.** Install the Airaid Intake Tube into the hump hose first, and then onto the throttle body. Adjust it for fit, and tighten the hose clamps. Next install the 3/8" breather hose (#8) between the 3/8" barbed fitting in the tube, and the factory port on the valve cover.



**15.** Install the Airaid Premium Filter (#1) onto the air filter adapter, and tighten the hose clamp. Next install the provided weather strip (#9) onto the top of the CAD. For ease of install, start at the inner fender, and work your way towards the radiator. Reinstall the beauty cover.

**16. Double check your work!**

Make sure there is no foreign material in the intake path. Make sure all clamps, hoses, bolts, and screws are tight.

**17. Reconnect the negative battery cable!**

Included with your Airaid Intake System is a sticker with a California Air Resources Board (C.A.R.B.) Executive Order (EO) number. This sticker must be placed in plain view inside of the engine compartment. Failure to do so may prevent you from passing a smog inspection.

Thank you for purchasing the Airaid Intake System. Contact Airaid @ (800) 498-6951 8:00 AM - 5:00 PM MST weekdays for questions regarding fit or instructions that are not clear to you. Your Airaid Intake System was carefully inspected and packaged. Check that no parts are missing, or were damaged during shipping. If any parts are missing, contact Airaid. The air filter element is protected from direct exposure to water and debris; care should be taken not to drive through deep water. WATER INGESTION IS THE DRIVERS RESPONSIBILITY! The air filter is reusable and should be cleaned using the Airaid Filter Tune-Up Kit periodically.

*Before!*



*After!*



**Don't Forget Your AIRAID Filter Tune-Up Kit!**



P/N 790-551 Aerosol Spray  
P/N 790-550 Squeeze Spray



Instructions Revision  
Date: 11/08/07