

# AIRRAID®

## INTAKE SYSTEMS

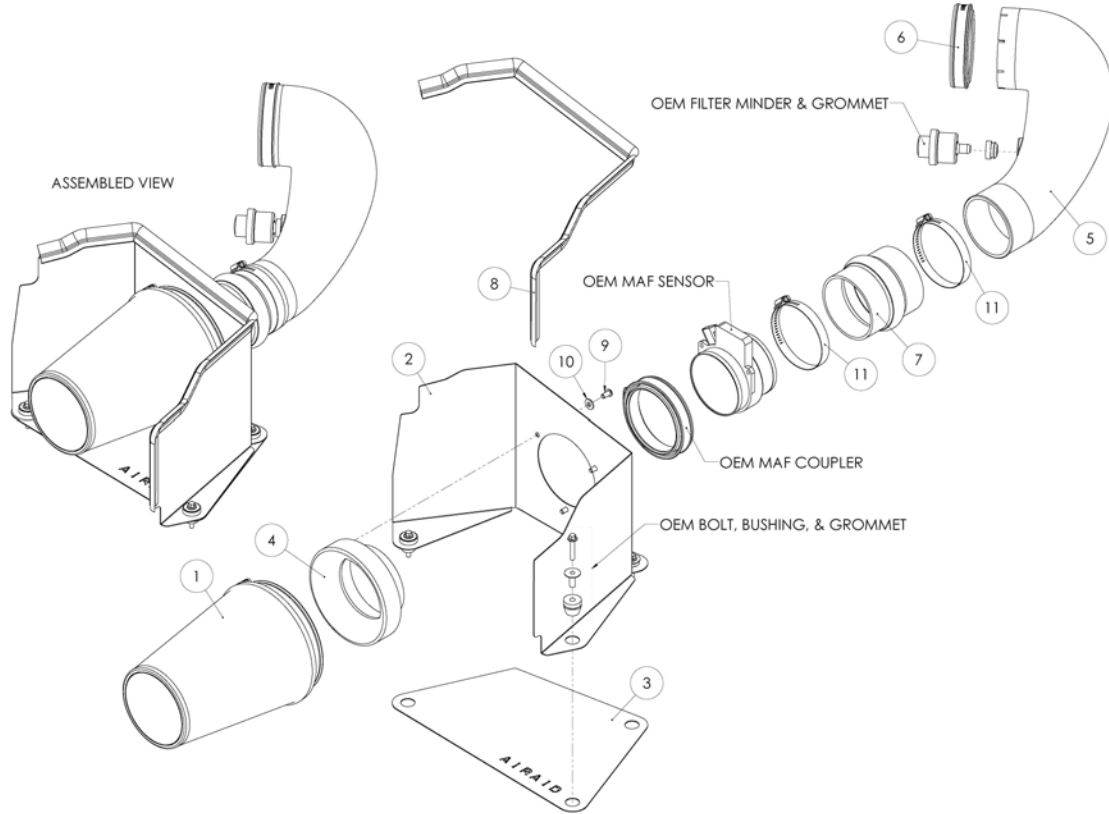
**Installation Instructions**  
**Part Number 201-146**  
**03-07 Hummer H2**  
**05-07 Hummer SUT**  
**6.0L V-8**

### Packing List:

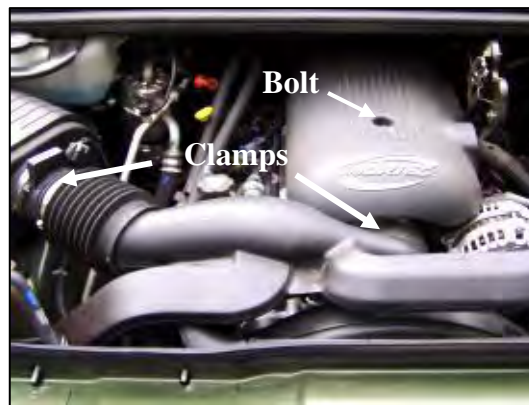
#1	701-469	Airaid Premium Filter	1
#2	KIT182MAFSC	Airaid MAF Panel	1
#3	KIT182BPC	Airaid Bottom Panel	1
#4	KIT1121MAFADA	Filter Adapter	1
#5	KIT983T	Modular Intake Tube	1
#6	KITCOUPLER02	Coupler W/ #68 Clamp	1
#7	KITHUMPHS02	Urethane Hump Hose	1
#8	KITWSTRIP02	Weather Strip 25'	1
	KIT146HPS	Hardware & Instructions	1
#9	KIT15DHC3050	1/4-20 Button Head Bolt	3
#10	KIT09FWZ019	1/4" Flat Washer	3
#11	KITHS60	#60 Hose Clamp	2

### Tools Required For Installation:

Flat Head Screwdriver  
 5/16" & 10mm Sockets  
 Ratchet and Extension



**1. Disconnect negative battery cable.**  
 Remove the factory filter minder and rubber grommet from the factory intake tube, retain for re-installation later in the install.



**2.** Loosen the recessed bolt and remove the beauty cover. Loosen the factory hose clamps on each end of the factory intake tube and remove it from vehicle.



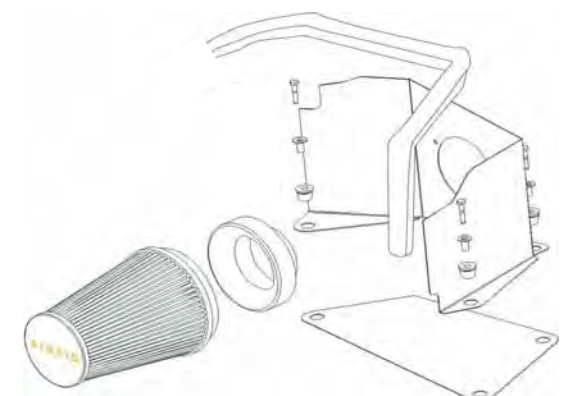
**3.** Loosen the Mass Air Flow sensor hose clamp. Remove the MAF sensor from the factory air box and temporarily set it aside. Use caution to retain the factory coupler & hose clamp on the MAF.



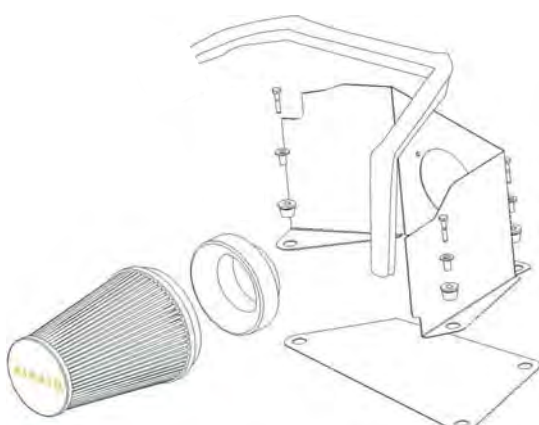
**4.** Remove the three factory air box hold down bolts, bushings, and grommets. Save them for the Airaid installation.



**5.** Remove the factory air box assembly from the engine compartment.



**6.** Align Cool Air Dam panels (#2, #3) & fasten together with saved grommets and bushings from step #4. Install the filter adapter (#4) using the 3 provided button head bolts (#9) and washers (#10).



**7.** Install the weather strip (#8) onto the top of the Airaid Cool Air Dam. (Hint: for easier installation start at one end or the other, not in the middle).



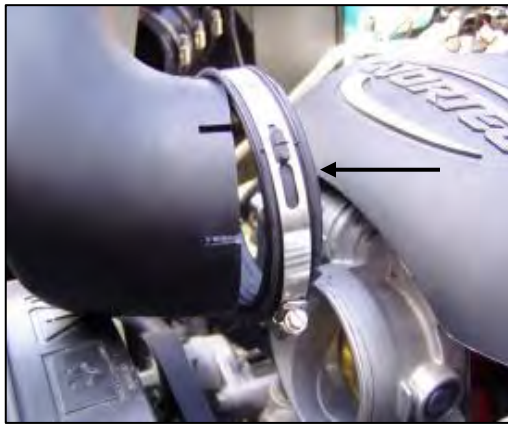
**8.** Mount the Airaid Premium filter (#1) onto the filter adapter and secure with the hose clamp.



**9.** Position the Airaid system over the three factory mounting points & secure with the three saved factory bolts removed in step #4.



10. Install the **MAF** sensor to the filter adapter (#4), and tighten the hose clamp .



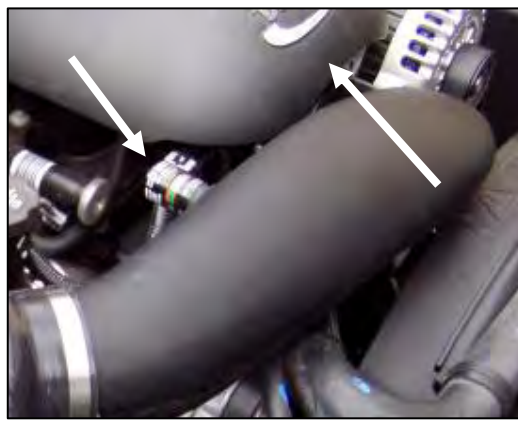
11. Install the provided coupler with clamp (#6) onto the Airaid Modular Intake Tube (MIT) (#5).



12. Install the provided urethane hump hose (#7) onto the Airaid Modular Intake Tube (MIT) (#5) with the 2 supplied #60 hose clamps (#11). **Note:** Leave hose clamps loose until final assembly.



13. Connect the Airaid MIT (#5), hump hose end first, to the **MAF** sensor, and then connect the other end of the tube assembly to the throttle body. Check for interference and adjust the MIT accordingly, and then tighten the hose clamps.



14. Re-install the factory filter minder and rubber grommet into rear of Airaid MIT. Re-install the beauty cover from step 2.

**15. Double check your work!** Make sure there is no foreign material in the intake path. Make sure all clamps, hoses, bolts, and screws are tight.

**16. Reconnect the negative battery cable!**

## Before!



## After!



**SynthaMax**  
**Do Not Oil**

**Synthamax Air Filters do not require oil.** Service air filter as needed by cleaning with common non-petroleum all-purpose household cleaner and water. Simple Green®, Formula 409® or equivalent works great. Apply cleaner to outside of air filter and allow to soak. Then flush filter clean from the inside out with a garden hose and repeat steps if necessary. Do not apply high pressure water or air to clean filter. Allow filter to air dry and reinstall.

Thank you for purchasing the Airaid Intake System. Contact Airaid @ (800) 498-6951 8:00 AM - 5:00 PM MST weekdays for questions regarding fit or instructions that are not clear to you. Your Airaid Intake System was carefully inspected and packaged. Check that no parts are missing, or were damaged during shipping. If any parts are missing, contact Airaid. The air filter element is protected from direct exposure to water and debris; care should be taken not to drive through deep water. WATER INGESTION IS THE DRIVERS RESPONSIBILITY!



Instructions Revision  
Date: 10/25/10