

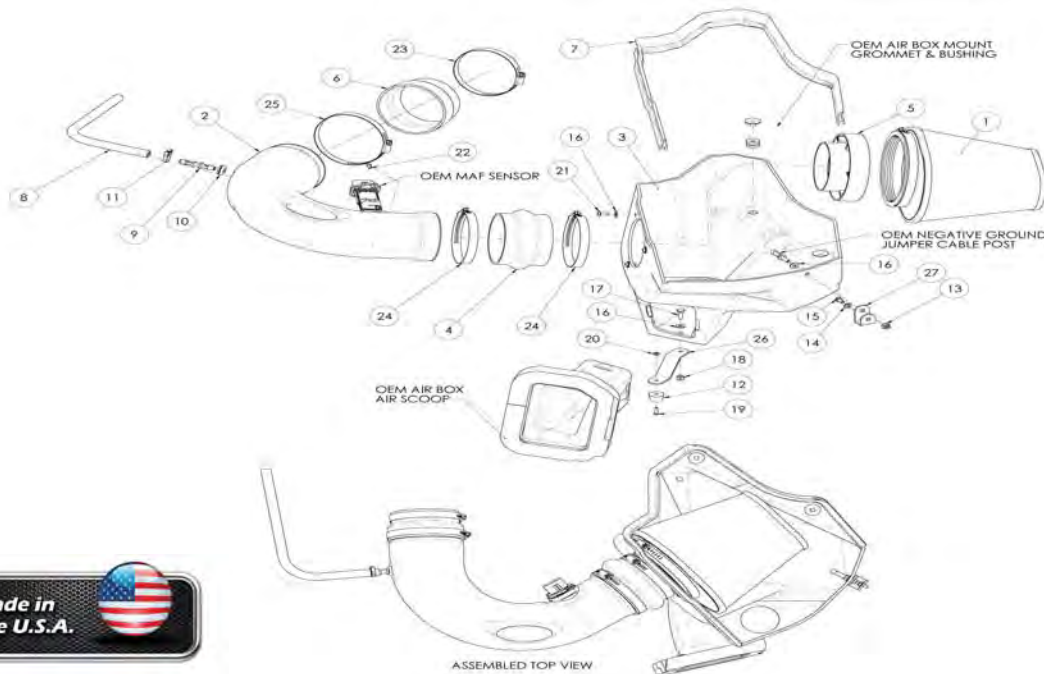


## INTAKE SYSTEMS

### Installation Instructions Part Number 250-243C 2010-13 Chevrolet Camaro 6.2L V8

#### Packing List:

#1	720-242	Airaid Premium Filter	1
#2	KIT243TCA	Carbon Fiber Intake Tube	1
#3	KIT243CABS	Cold Air Box	1
#4	KITHUMPHS13	Silicone Hump Hose	1
#5	KIT1121MAFADA	Filter Adapter	1
#6	KITRDCR16	Silicone Reducer	1
#7	KITWSTRIP03	Weatherstrip 36"	1
#8	KITHOSE06	3/8" x 18" Breather Hose	1
	<b>KIT243CHP</b>	<b>Hardware and Instructions</b>	
#9	-KITFITTING23	3/8" Barbed Fitting	x1
#10	-KITGRMT18	Grommet	x1
#11	-KITSNP14M4	5/8" Speed Clamp	x1
#12	-KITBMP02	Bumper	x1
#13	-KIT60CNFHPZ	M6 Flange Nut	x1
#14	-KIT09LWZ025	1/4" Lock Washer	x1
#15	-KIT60C120HCS	M6x1.0x12 Hex Bolt	x1
#16	-KIT09FWZ0193	1/4" Flat Washer	x5
#17	-KIT25C75HCSS	1/4-20 x 3/4" Hex Bolt	x1
#18	-KIT25CNNES	1/4" Nylon Lock Nut	x1
#19	-KIT15BHC3063	8-32 x 5/8" Button Head Screw	x1
#20	-KIT8CNKEPZ	#8 Kep Nut	x1
#21	-KIT15DHC3050	1/4-20 x 1/2" Button Head Screw	x3
#22	-KIT15BHC3038	8-32 x 3/8" Button Head Screw	x2
#23	-KITHS60	#60 Hose Clamp	x1
#24	-KITHS64	#64 Hose Clamp	x2
#25	-KITHS68	#68 Hose Clamp	x1
#26	-KIT243LB	#243 Bracket	x1
#27	-KIT243SB	Side Bracket	x1



Full color instructions can be viewed on our web site at [Airaid.com](http://www.airaid.com). Use the **Product Search** function to find your part number, and click **View Details** or go to <http://www.airaid.com/InstallationPDF/250-243C.pdf>



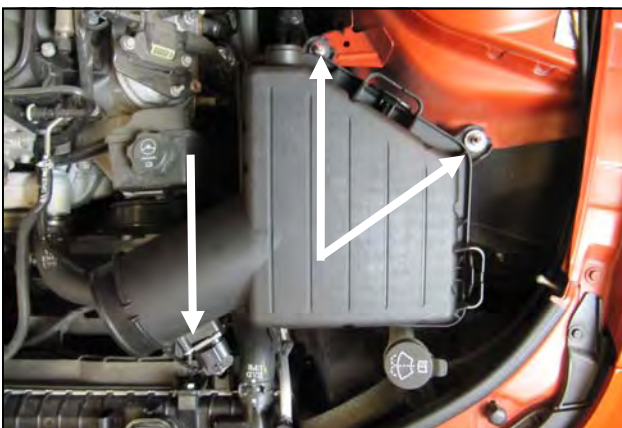
**Disconnect The Negative Battery Terminal!**  
1. Remove the oil fill cap. Lift up on the engine cover to unseat it from the mounts and set it aside.



2. Remove the crankcase breather line:  
A.) Separate the breather line from the air intake tube.  
B.) Locate the locking ring and its release tab inside of the crankcase breather fitting above the passenger side valve cover and release it from the steel line. Remove the breather from the vehicle. It will not be reused.



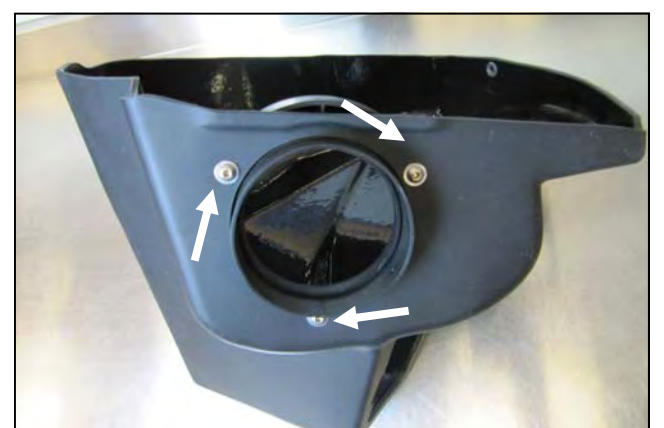
3. Loosen the clamps on the throttlebody and the airbox and remove the intake tube from the vehicle.



4. Disconnect the Mass Air Flow sensor in the airbox outlet and remove the two 6mm nuts securing the airbox assembly to the vehicle.



5. Lift the complete air box assembly straight up, and out of the vehicle.



6. Install the filter adapter (#5) into the Airaid Cold Air Box, or CAB (#3) as shown using three 1/4-20 Button Head Bolts (#21), and 1/4" Flat Washers (#16).



7. Remove the factory airbox grommets and the steel inserts inside of them.



8. Transfer the factory grommets and inserts into the Cold Air Box.



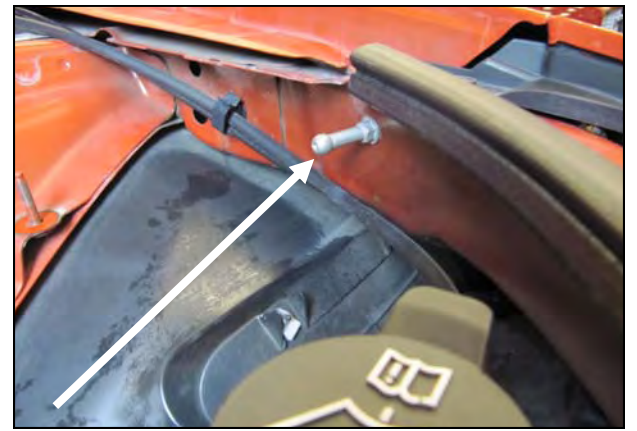
9. Turn the CAB upside down and mount the Lower Bracket (#20) to the bottom using the 1/4-20 x 3/4" Hex Bolt (#17), 1/4" Flat Washer (#16), and 1/4" Nylon Nut (#18) as shown. Next- using the 8-32x5/8" Button Head Screw (#19), and the #8 Kep Nut (#19), attach the plastic Bumper (#12) to the Bracket as shown.



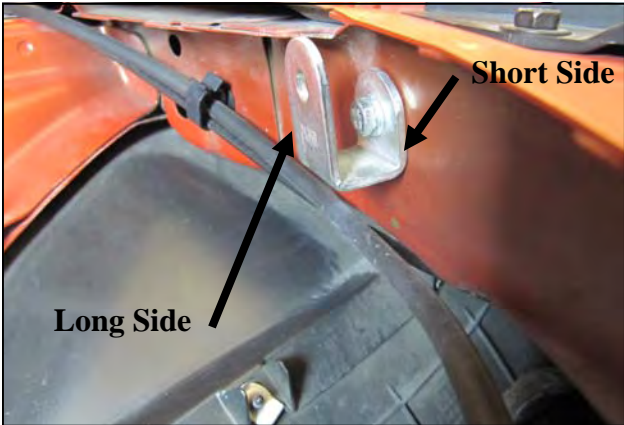
10. Compress the sides of the factory intake scoop and remove it from the airbox.



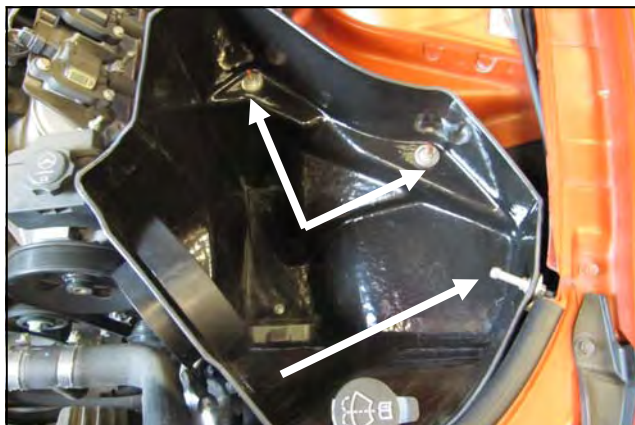
11. Reinstall the factory air scoop into the Airaid Cold Air Box.



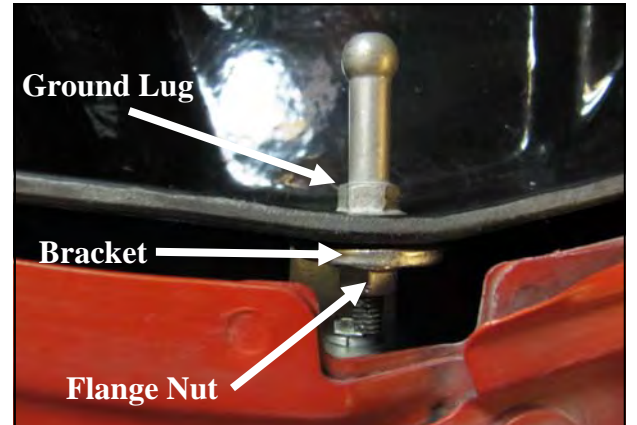
12. Remove and save the ground lug from the driver's side inner fender. It will be reused in step #14.



13. Replace the ground lug from step #12 with the Side Bracket (#27) as shown using the 6mm x12mm Hex Bolt (#15), and Lock Washer (#14).



14. Install the Airaid CAB assembly into the vehicle locating the grommets over the factory studs. Reinstall the factory nuts from step #4 onto the studs. Reinstall the factory ground lug thru the CAB and thru the Side Bracket using one Flat Washer (#16), and one 6mm Flange Nut (#13).



Detailed view of Ground/Bracket assembly



15. Install the Hump Hose (#4) onto the Filter Adapter using two #64 Hose Clamps (#24). Next install the Reducing Coupler (#6) with one #60 Hose Clamp (#23) on the throttlebody and one #68 Hose Clamp (#25) on the open end.



16. Transfer the Mass Air Flow sensor into the Airaid Intake Tube (#2) and secure it using two 8-32x3/8" Button Head Screws (#22). Do not attempt to reuse the factory screws. Install the Barbed Fitting (#9) and Grommet (#10) into the 5/8" hole in the Tube.



17. Install the Airaid Intake Tube (#2) into the Hump Hose first, and then into the reducing coupler. Adjust for fit, and tighten all four Hose Camps. **It is Very important to verify that the Intake Tube is not rubbing on the Radiator or the hood.**



18. Install the 3/8"x18" breather hose between the Barbed Fitting and the steel crankcase breather tube on the valve cover. Refer to step #2. Install the Speed Clamp (#11) over the Breather Hose at the Barbed Fitting as shown.



19. Install the Airaid Premium Filter (#1) onto the Filter Adapter and tighten the clamp. Next install the Weather Strip (#7) onto the top of the CAB. For ease of installation, start the front of the CAB near the radiator and work your way around towards the fender



20. Reinstall the engine cover and oil fill cap. **Double check your work!** Make sure there is no foreign material in the intake path. Make sure all clamps, hoses, bolts, and screws are tight. **Reconnect the negative battery cable!**

Thank you for purchasing the Airaid Intake System. Contact Airaid @ (800) 498-6951 8:00 AM - 5:00 PM MST weekdays for questions regarding fit or instructions that are not clear to you. Your Airaid Intake System was carefully inspected and packaged. Check that no parts are missing, or were damaged during shipping. If any parts are missing, contact Airaid. The air filter element is protected from direct exposure to water and debris; care should be taken not to drive through deep water. WATER INGESTION IS THE DRIVERS RESPONSIBILITY! The air filter is reusable and should be cleaned using the Airaid Filter Tune-Up Kit periodically.

## Don't Forget Your AIRAID Filter Tune-Up Kit!



P/N 790-551 Aerosol Spray  
P/N 790-550 Squeeze Spray

