



Installation Instructions

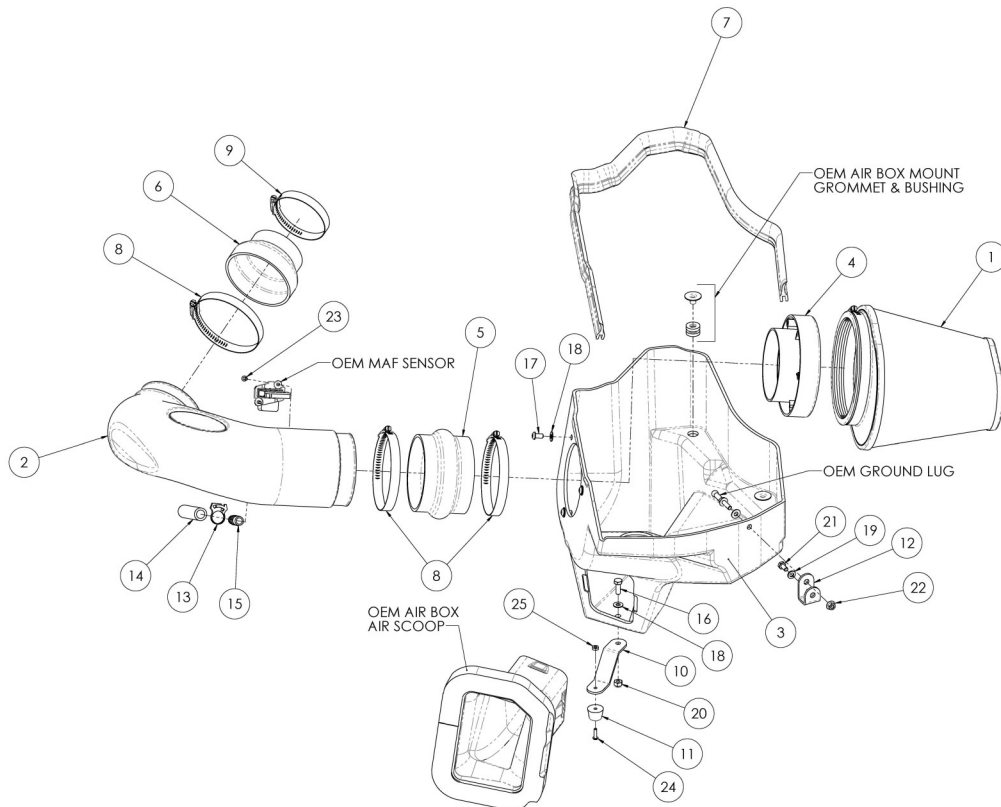
For Part Numbers:

- 250-310 720-242 Airaid Oiled Media Filter
- 251-310 721-242 SynthaMax Dry Media Filter - Red
- 252-310 722-242 SynthaMax Dry Media Filter - Black
- 253-310 723-242 SynthaMax Dry Media Filter - Blue

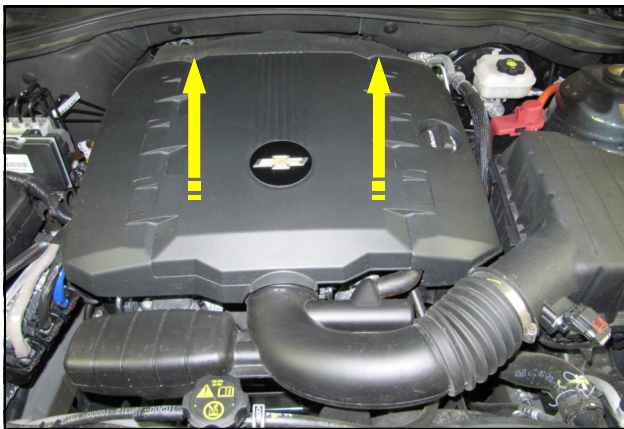
2012-15 Chevrolet Camaro
3.6L V6

Component Identification

| | | |
|-----|---------------------------------|---|
| 1. | Airaid Premium Filter | 1 |
| 2. | Intake Tube | 1 |
| 3. | Cold Air Box | 1 |
| 4. | Filter Adapter | 1 |
| 5. | Silicone Hump Hose | 1 |
| 6. | Silicone Reducing Coupler | 1 |
| 7. | Weatherstrip 36" | 1 |
| 8. | #64 Hose Clamp | 3 |
| 9. | #48 Hose Clamp | 1 |
| 10. | Lower Bracket | 1 |
| 11. | Bumper | 1 |
| 12. | Side Bracket | 1 |
| 13. | #16 Speed Clamp | 1 |
| 14. | PCV Hose, 4.5" Long | 1 |
| 15. | 1/4" NPT Barbed Fitting | 1 |
| 16. | 1/4-20 x 3/4" Hex Bolt | 1 |
| 17. | 1/4-20 x 1/2" Button Head Screw | 3 |
| 18. | 1/4" Flat Washer | 5 |
| 19. | 1/4" Lock Washer | 1 |
| 20. | 1/4" Nylon Lock Nut | 1 |
| 21. | M6x1.0x12 Hex Bolt | 1 |
| 22. | M6 Flange Nut | 1 |
| 23. | #8-32 x 1/2" Button Head Screw | 2 |
| 24. | 8-32 x 5/8" Button Head Screw | 1 |
| 25. | #8 Kep Nut | 1 |

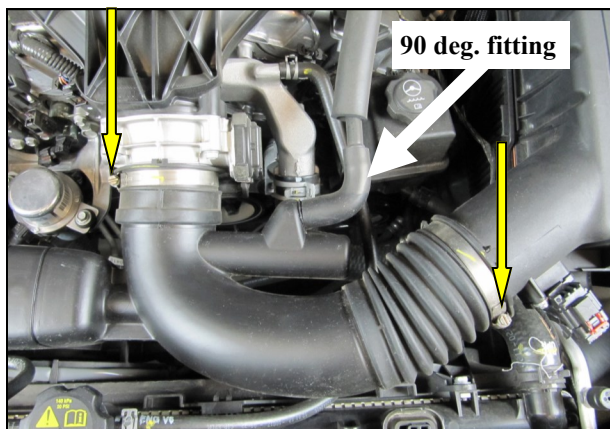


Full color instructions can be viewed on our web site at Airaid.com. Use the **Product Search** function to find your part number, and click **View Details**.

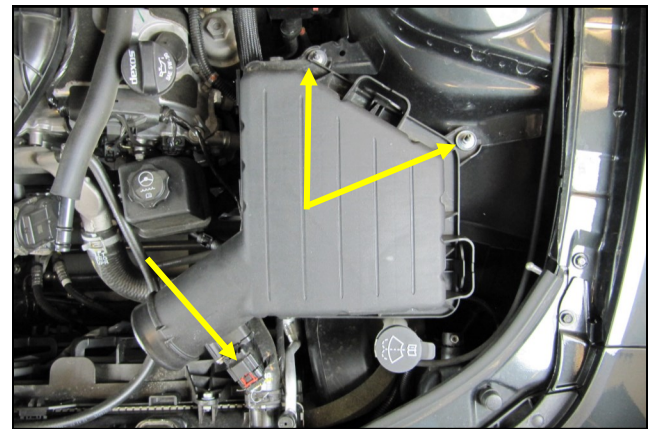


Disconnect The Negative Battery Terminal!

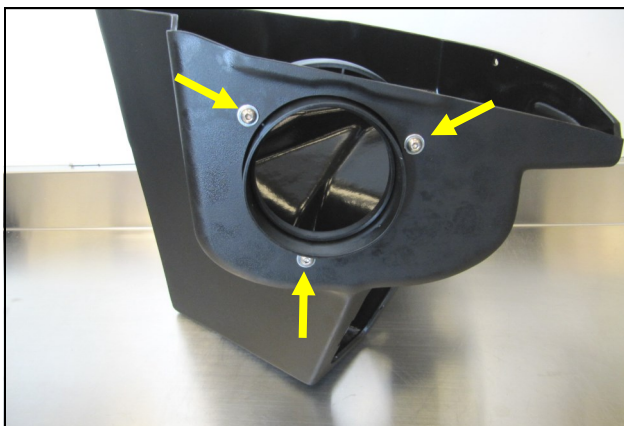
1. Remove the oil fill cap and then lift up on the front of the engine cover to remove it from the vehicle. Replace the oil cap to make sure nothing falls into the motor during the install.



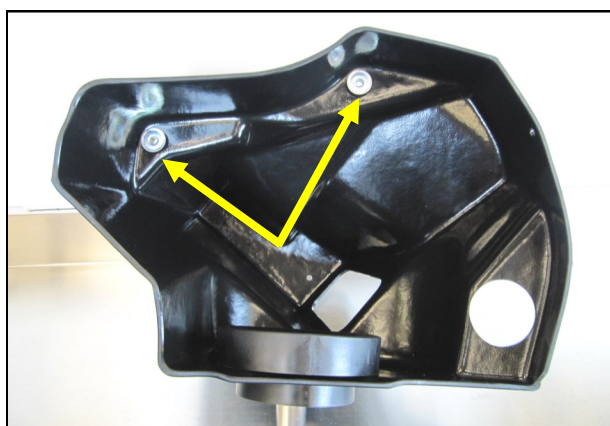
2. Disconnect the PCV breather at the 90 degree fitting. Loosen the two intake tube clamps and remove the tube from the vehicle.



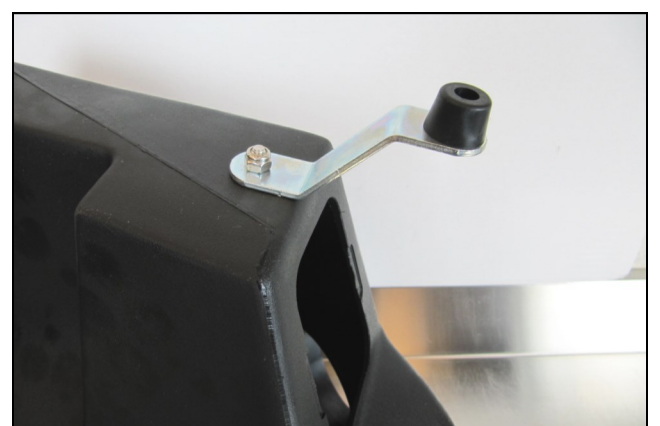
3. Disconnect the Mass Air Flow sensor. Using a deep 10mm socket, remove and save the two nuts that secure the factory airbox to the inner fender. These will be re-used in step 10. Lift up and remove the entire airbox and scoop assembly.



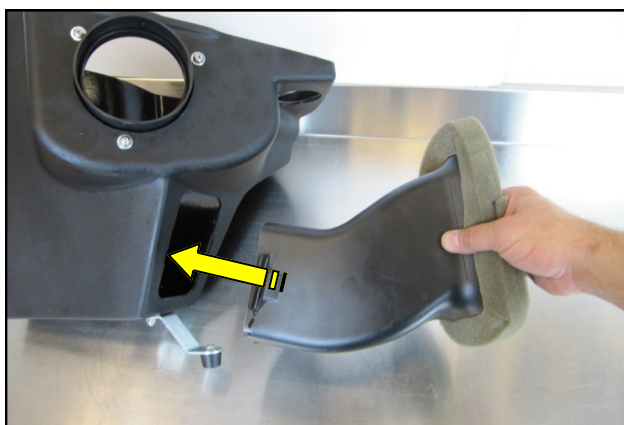
4. Install the Filter Adapter onto the Airaid Cool Air Box as shown using three 1/4-20 Button Head Screws (#17), and 1/4" Flat Washers (#18). Refer to the line drawing above for details.



5. Transfer the two air box mounting grommets and steel sleeves from the factory air box into the Airaid Cool Air Box.



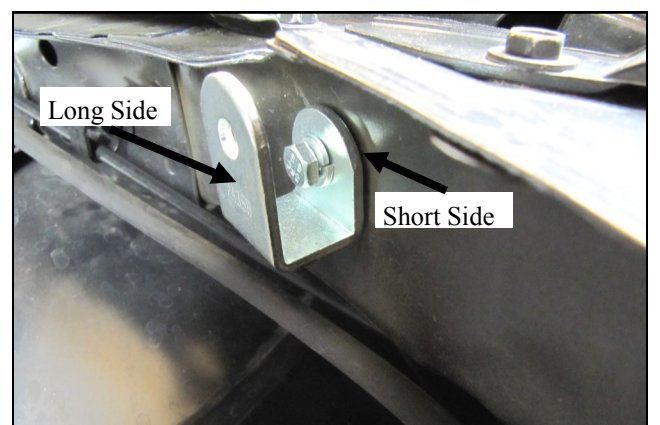
6. Turn the Box upside down and mount the Lower Bracket (#10) using the 1/4-20 x 3/4" Hex Bolt (#16), 1/4" Flat Washer (#18), and 1/4" Nylon Lock Nut (#20) as shown. Attach the Plastic Bumper (#11) to the Bracket using the 8-32 x 5/8" Button Head Screw (#24), and the #8 Kep Nut (#25).



7. Transfer the factory air scoop into the Airaid Cool Air Box. When properly installed, the small locking tab will be inside the Box and the large one will be on the outside.



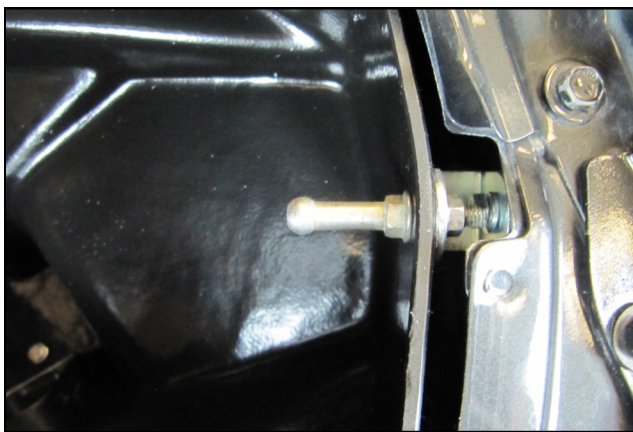
8. Remove and save the ground lug from the driver's side inner fender. It will be re-used in step #11.



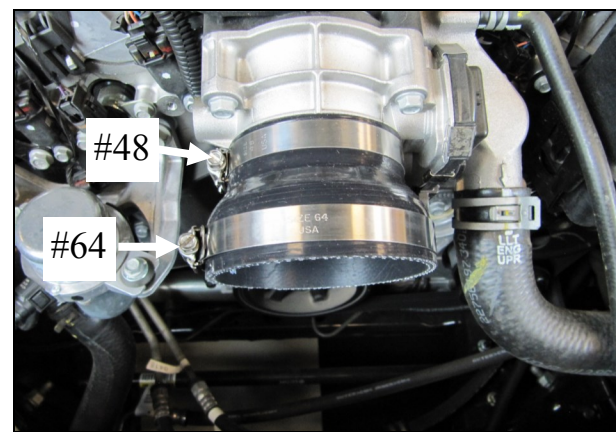
9. Install the Side Bracket (#12) where the ground lug was installed, using the 6mmx12mm Hex Bolt (#21), and Lock Washer (#19).



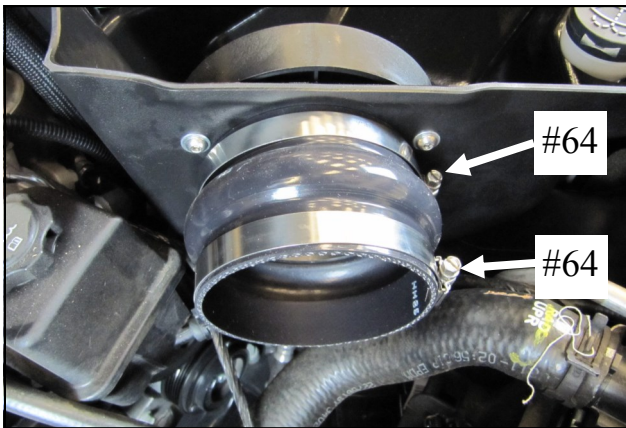
10. Install the Cool Air Box assembly into the vehicle. Slide the airbox grommets and sleeves over the factory studs and secure it using the nuts removed in step 3. **Hint:** Lifting the washer bottle cap makes for an easier installation.



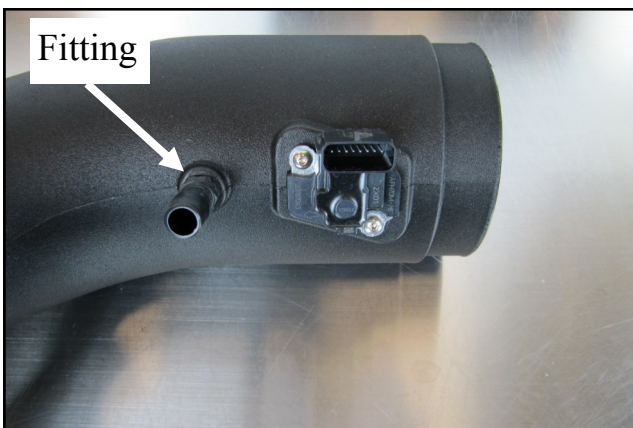
11. Reinstall the factory ground lug through the Cool Air Box and through the Side Bracket using one 1/4 " Flat Washer and the 6mm Flange Nut (#22).



12. Slide the Coupler with the #48 Hose Clamp onto the throttlebody and one #64 Hose Clamp on the large end. Leave the Clamps loose at this time.



13. Slide the Hump Hose and two #64 hose clamps onto the Filter Adapter. Leave the Clamps loose at this time.



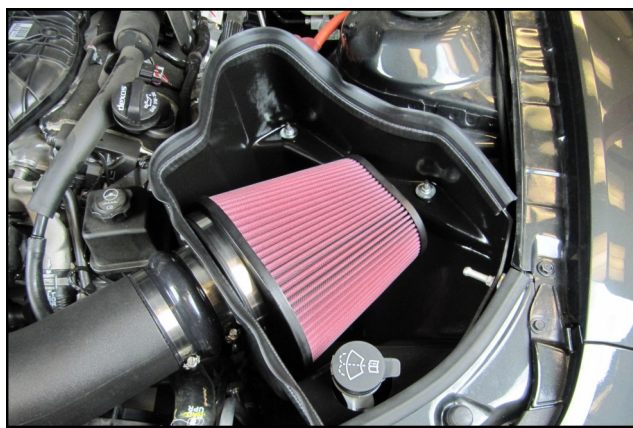
14. Install the 1/4" Barbed Fitting into the Airaid Intake Tube as shown. Transfer the Mass Air Flow meter from the factory air box, into the Airaid Tube and secure it using the two 8-32 x 1/2 Screws (#23). Do Not Use The Factory Hardware.



15. Install the Airaid Intake Tube into the hump hose first, and then into the coupler. Adjust for fit, and tighten all four Hose Clamps. Reconnect the PCV breather using the supplied PCV Hose. Slide the hose onto the factory hard line and onto the Intake Tube's Barbed Fitting. Use the Speed Clamp (#13) to secure the Hose onto the Fitting. Reconnect the Mass Air Flow meter.



16. Install the Airaid Premium Filter onto the Filter Adapter and tighten the clamp.



17. Install the Weatherstrip onto the Cool Air Box as shown, with the contour rolling away from the Filter. Reinstall the engine cover and oil fill cap.



18. Double check your work! Make sure there is no foreign material in the intake path. Make sure all clamps, hoses, bolts, and screws are tight. Double check the hood clearance! Reconnect the negative battery cable.

Thank you for purchasing the Airaid Intake System. Contact Airaid @ (800) 498-6951 8:00 AM - 5:00 PM MST weekdays for questions regarding fit or instructions that are not clear to you. Your Airaid Intake System was carefully inspected and packaged. Check that no parts are missing, or were damaged during shipping. If any parts are missing, contact Airaid. The air filter element is protected from direct exposure to water and debris; care should be taken not to drive through deep water. WATER INGESTION IS THE DRIVERS RESPONSIBILITY! The air filter is reusable and should be cleaned periodically.

FILTER IDENTIFICATION

720-242 Airaid Oiled Media
722-242 Airaid SynthaMax Dry Media - Black

721-242 Airaid SynthaMax Dry Media - Red
723-242 Airaid SynthaMax Dry Media - Blue

For your Oiled media filter we suggest using the AIRAID Filter Tune-Up Kit!



P/N 790-551 Aerosol Spray
P/N 790-550 Squeeze Spray



Do Not Oil

Synthamax Air Filters do not require oil. Service air filter as needed by cleaning with common non-petroleum all-purpose household cleaner and water. Simple Green®, Formula 409® or equivalent works great. Apply cleaner to outside of air filter and allow to soak. Then flush filter clean from the inside out with a garden hose and repeat steps if necessary. Do not apply high pressure water or air to clean filter. Allow filter to air dry and reinstall.