

AIR AID®

INTAKE SYSTEMS

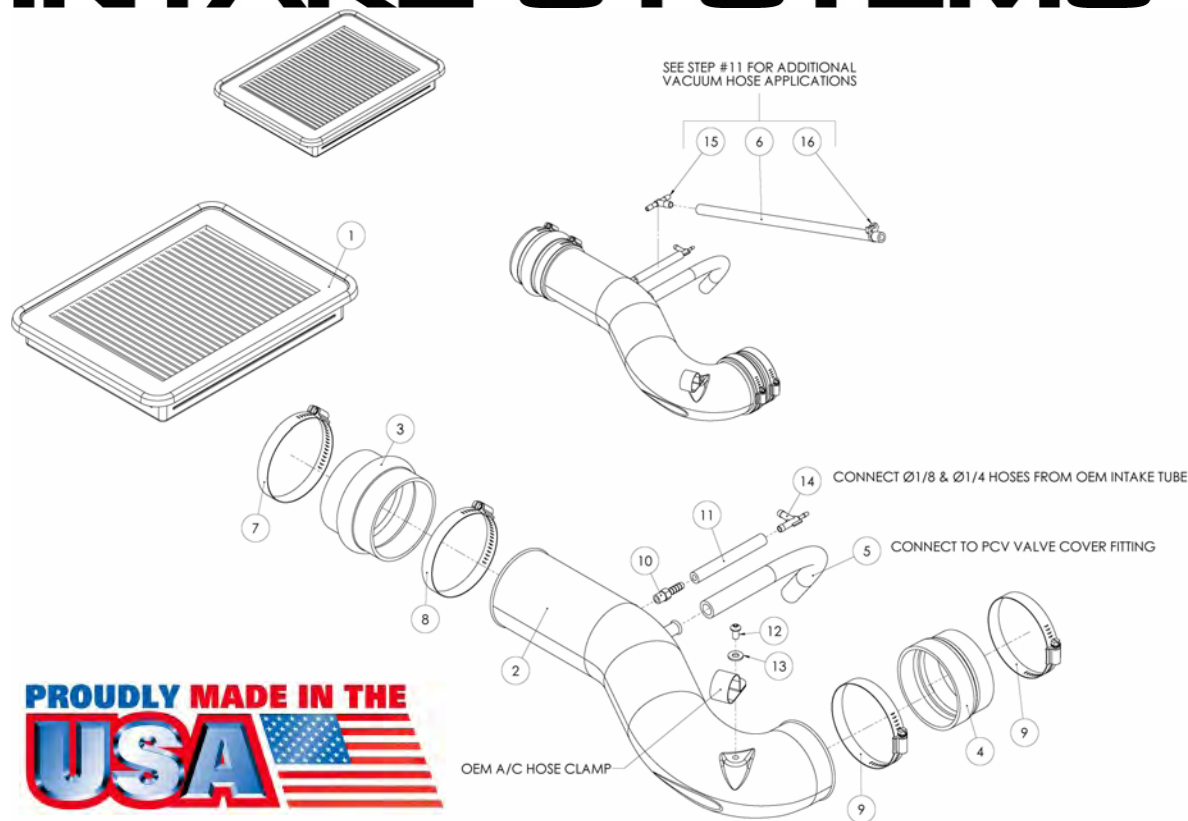


Installation Instructions

Part Number 511-761 Jr. Kit

2000-04 Toyota Tundra 4.7L

2001-04 Toyota Sequoia 4.7L

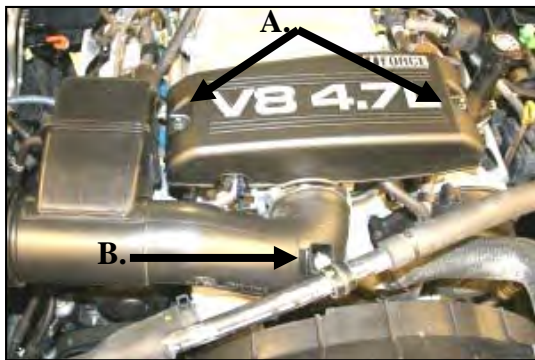


Packing List:

#1	851-144	Airaid Premium Filter	1
#2	KIT918T	Modular Intake Tube	1
#3	KITHUMPS11	Urethane Hump Hose	1
#4	KITRDCR04	Reducer Coupler	1
#5	KITHOSE01	1/2" x 13" Breather Hose	1
#6	KITHOSE06	3/8" x 17" Hose	1
	KIT761HP	Hardware & Instructions	1
#7	KITHS56	#56 Hose Clamp	1
#8	KITHS60	#60 Hose Clamp	1
#9	KITHS52	#52 Hose Clamp	2
#10	KITFITTING10	1/4" Barb x 1/8" NPT Fitting	1
#11	KITHOSE03	1/4" x 4" Hose	1
#12	KIT15DHC3050	1/4 - 20 x 1/2" Button Head Bolt	1
#13	KIT09FWZ019	1/4" Flat Washer	1
#14	KITFITTING11	1/4" x 1/4" x 1/8" Vacuum Tee	1
#15	KITFITTING13	1/4" x 1/4" x 3/8" Tee	1
#16	KITSNP14M4	#14 Speed Clamp	1

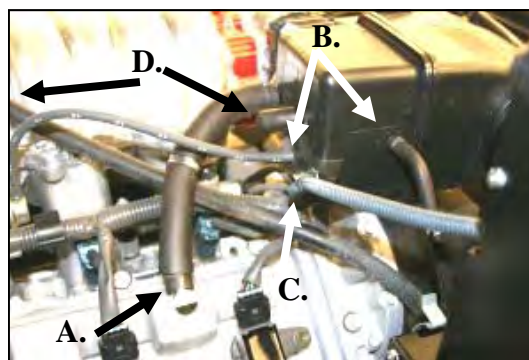
Tools Required For Installation:

5/32" Allen Wrench
5/16" & 10mm Socket
Ratchet & Extension
7/16" Wrench



1. Disconnect negative battery cable.

A) Remove two 10mm nuts, and remove beauty cover. (Save for reuse). B) Remove the bolt thru the Adel clamp that holds the air conditioning hose.



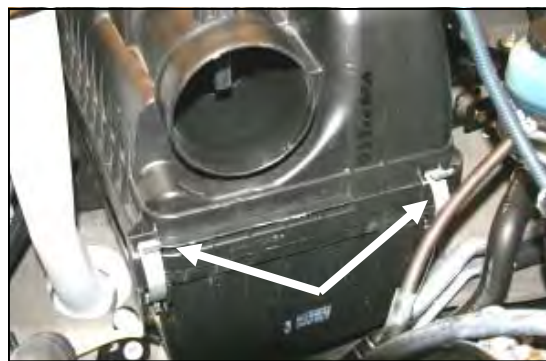
2. A) Disconnect the breather hose at the valve cover. B) Disconnect 1/4" and 1/8" vacuum lines on the back of the factory intake tube. C) Unclip MAF wire harness retainer from the intake tube. D) *Sequoias and 2000-02 Tundras only; remove 3/8" vacuum hose between factory intake tube and metal fitting on top of the intake manifold. (Hose Not Shown)*



3. Loosen the hose clamps on the intake tube at the throttle body, and at the airbox.



4. Remove the factory intake tube from the vehicle.



5. Unlatch the 4 clips on the factory airbox, and remove the lid.



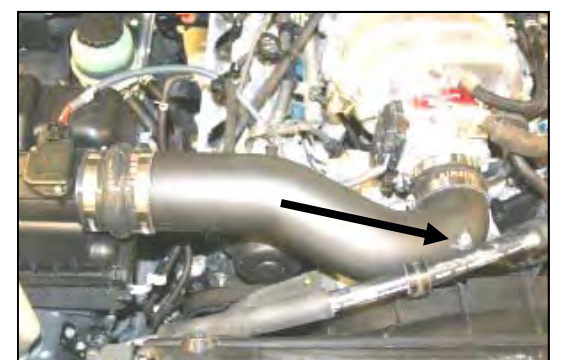
6. Remove the factory air filter, and install the Airaid Premium Filter (#1). Reinstall the factory airbox lid, and latch 4 clips.



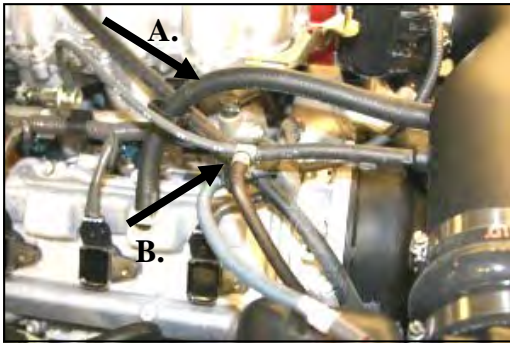
7. Install the small end of the urethane hump hose (#3) and the #56 hose clamp (#7) over the factory airbox. Install the #60 hose clamp (#8) onto the other side of the urethane hump hose. Next install the reducer coupler (#4), small side first, onto the throttle body with two #52 hose clamps (#9). Leave the clamps loose for now.



8. Install the 1/4" Barb x 1/8" NPT Fitting (#10) into the Airaid Modular Intake Tube (MIT) (#2) as shown. Now slide the 1/4" x 4" hose (#11) onto the barb fitting.



9. Install the MIT into the urethane hump hose first, and then into the reducing coupler. Adjust the MIT snugly against the throttle body, and tighten the 4 hose clamps. Next install the 1/4-20 button head bolt (#12) and 1/4" flat washer (#13) thru the Adel clamp and into the MIT to hold the air conditioning hose.



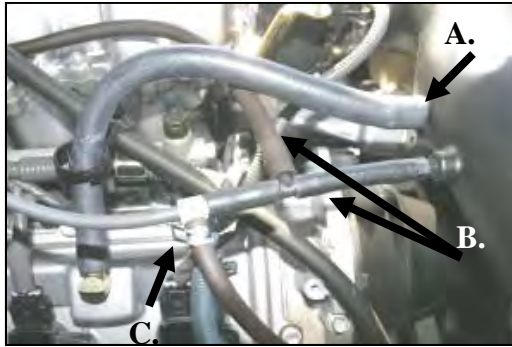
10. 2003-04 Tundra Pickup & 04 Sequoia

A) Install the 1/2" x 13" breather hose (#5) from the MIT to the valve cover.
 B) Install the 1/4" x 1/4" x 1/8" vacuum tee (#14) into the 1/4" x 4" hose (#11) and then to the factory 1/4" and 1/8" vacuum lines, as shown.

13. Double check your work!

Make sure there is no foreign material in the intake path. Make sure all clamps, hoses, bolts, nuts, and screws are tight.

14. Reconnect the negative battery cable!



11. All Other Applications

A.) Install the 1/2" x 13" breather hose (#5), from the MIT to the valve cover. B.) Cut the 1/4" x 4" hose (#11) in half, and install the 1/4" x 1/4" x 3/8" tee (#15) between the two halves. Connect the 3/8" x 17" hose (#6), between the tee, and the factory metal fitting above the intake manifold. Squeeze the #14 speed clamp (#16) over the hose at the factory metal fitting. (not shown) C.) Install the 1/4" x 1/4" x 1/8" vacuum tee (#14) into the 1/4" x 4" hose (#11) and then into the factory 1/4" vacuum hose, and 1/8" vacuum hose as shown. Refer to the picture above, or step #2.



12. Reinstall the beauty cover removed in step #1.

Before!



After!



Synthamax Air Filters do not require oil. Service air filter as needed by cleaning with common non-petroleum all-purpose household cleaner and water. Simple Green®, Formula 409® or equivalent works great. Apply cleaner to outside of air filter and allow to soak. Then flush filter clean from the inside out with a garden hose and repeat steps if necessary. Do not apply high pressure water or air to clean filter. Allow filter to air dry and reinstall.

SynthaMax®

Do Not Oil

