



Installation Instructions

For Part Numbers:

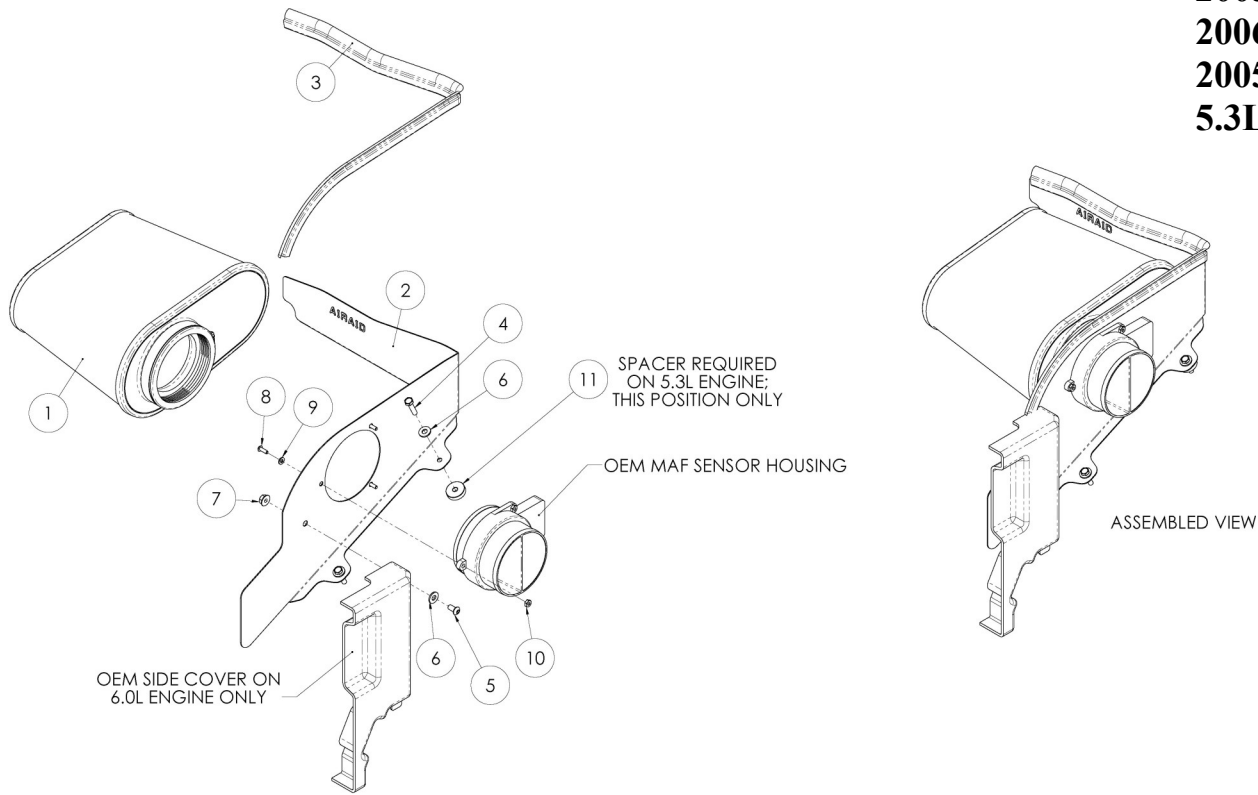
200-228	720-447 Airaid Oiled Media Filter
201-228	721-447 SynthaMax Dry Media Filter - Red
202-228	722-447 SynthaMax Dry Media Filter - Black
203-228	723-447 SynthaMax Dry Media Filter - Blue

2005-06 Chevrolet Trailblazer

2006 Chevrolet SS Trailblazer

2005-06 GMC Envoy

5.3L V8, 6.0L V8



Component Identification

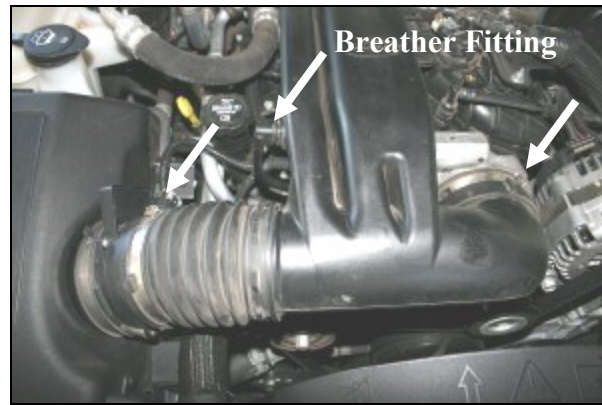
1.	Airaid Premium Filter	1
2.	MAF Panel	1
3.	Weather Strip 26"	1
4.	M6 x 25mm Hex Bolt	3
5.	1/4 - 20 x 1/2" Button Head Bolt	1
6.	1/4" Flat Washer	4
7.	1/4 - 20 Serrated Nut	1
8.	8-32 x 1/2" Button Head Screw	3
9.	#8 Flat Washer	3
10.	8-32 Keps Nut	3
11.	Aluminum Spacer	1

Full color instructions can be viewed on our web site at Airaid.com. Use the **Product Search** function to find your part number, and click **View Details**.

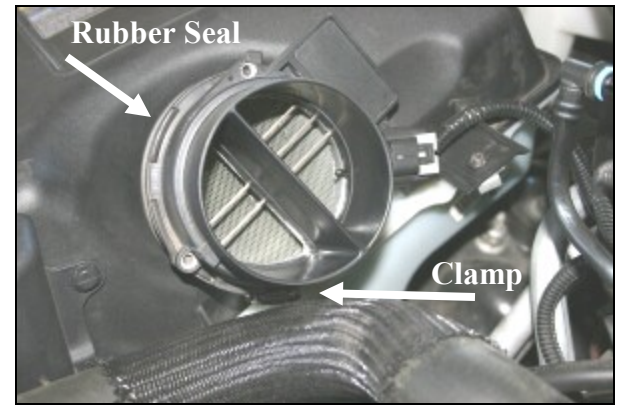


1. Disconnect the negative battery cable.

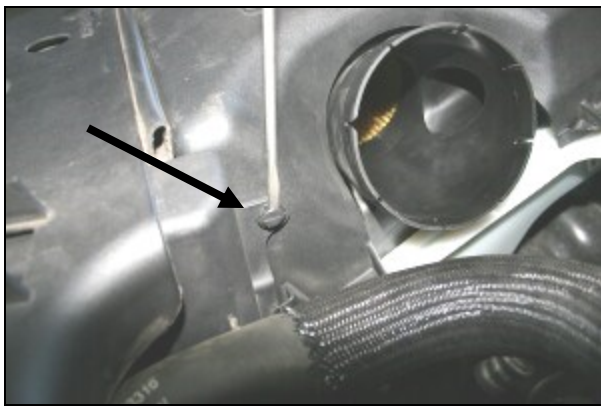
6.0 Liter Only: Loosen the factory bolt and remove the engine beauty cover, and set them aside for reuse.



2. Using a 5/16" socket or flat blade screwdriver, loosen the hose clamps on both ends of the factory intake tube. Carefully pull the crankcase breather fitting out of the factory intake tube. Remove the factory intake tube from the vehicle.



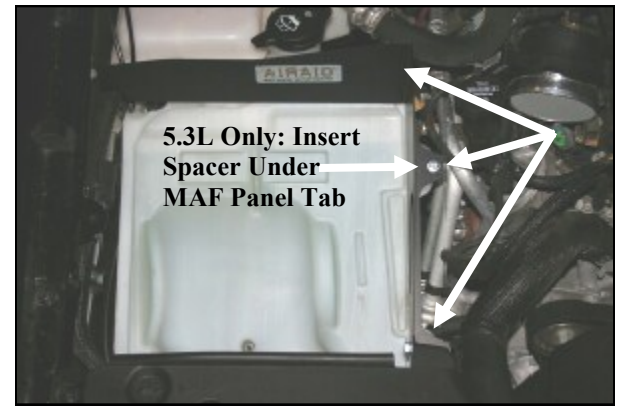
3. Loosen the hose clamp on the Mass Air Flow (MAF) sensor and remove only the sensor from the factory air filter housing without disconnecting the wiring harness. Set it aside for reuse. Leave the clamp and rubber seal on the factory filter housing.



4. **6.0 Liter Only:** Using a flat blade screwdriver, gently pry the plastic retaining clip from the factory side cover. Pull out the center pin, and then remove the clip from the cover.

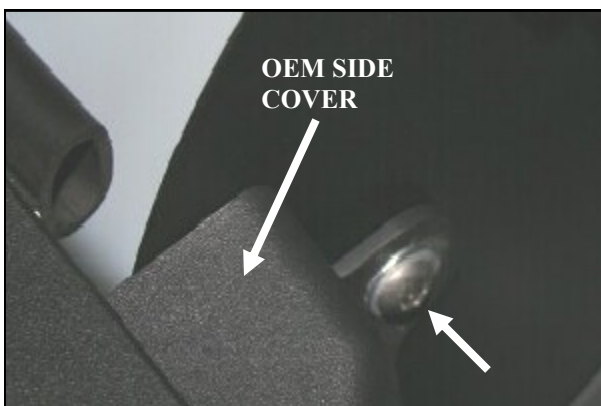


5. Loosen the four mounting screws on the factory airbox lid. Remove the factory airbox lid, filter, and resonator as an assembly.

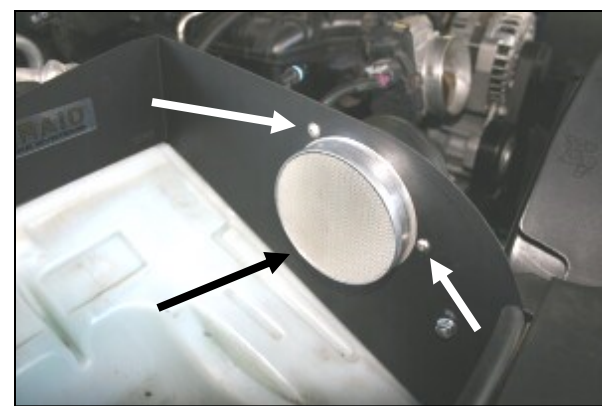


6. Mount the MAF Panel (#3) onto the airbox base using three M6 x 25mm Hex Bolts (#7), and flat washers (#9).

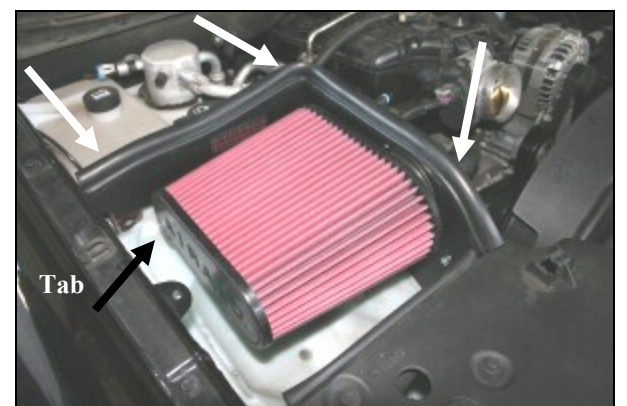
5.3 Liter Only: Insert one aluminum spacer (#11) between the panel tab and the lower airbox in the position as shown. Tighten using a 10mm socket, ratchet and extension.



7. **6.0 Liter Only:** Insert one 1/4 - 20 x 1/2" button head bolt (#8) and 1/4" flat washer (#9) through the hole in the factory side cover, and through the hole in the panel. Secure using one 1/4 - 20 serrated nut (#10).



8. Mount the MAF sensor onto the panel using three 8-32 x 1/2" button head screws (#11), #8 flat washers (#12), and 8-32 keps nuts (#13). (Note: sensor should be mounted with "flow" arrow on top).



9. Install the Airaid Premium Filter (#1) onto the MAF sensor. Rotate the filter so that the tab contacts the air box base, and then tighten the clamp. Next install the supplied weatherstrip (#3) onto the top of the MAF panel starting at the right fender and work your way towards the radiator.



10. Reinstall the factory intake tube and tighten the hose clamps. Reconnect the factory crankcase breather tube.

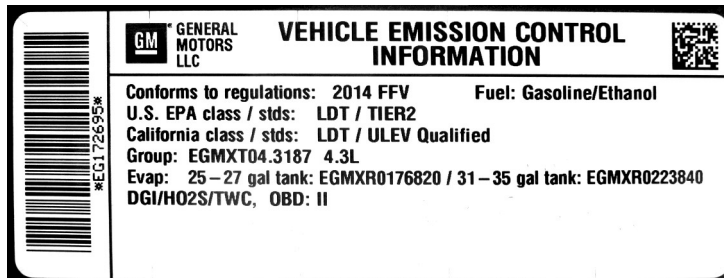


11. Reinstall the factory beauty cover and tighten the bolt.

12. Double check your work!

Make sure there is no foreign material in the intake path. Make sure all clamps, hoses, bolts, and screws are tight.

13. Reconnect the negative battery cable!



WARNING! If your vehicle has a Vehicle Emission Control Information decal affixed to the factory airbox, a new replacement label must be obtained and installed in a readily visible position in the engine compartment in order to remain CARB compliant. Failure to do so will prevent the vehicle from passing a smog check. Replacement labels can be ordered from your local dealership. Regulations state that the VECI label shall not be affixed to any equipment which is easily detached from the vehicle. Label placement, under the hood on a painted surface is recommended.

Thank you for purchasing the Airaid Intake System. Contact Airaid @ (800) 498-6951 8:00 AM - 5:00 PM MST weekdays for questions regarding fit or instructions that are not clear to you. Your Airaid Intake System was carefully inspected and packaged. Check that no parts are missing, or were damaged during shipping. If any parts are missing, contact Airaid. The air filter element is protected from direct exposure to water and debris; care should be taken not to drive through deep water. WATER INGESTION IS THE DRIVERS RESPONSIBILITY! The air filter is reusable and should be cleaned periodically.

FILTER IDENTIFICATION

720-447 Airaid Oiled Media
722-447 Airaid SynthaMax Dry Media - Black

721-447 Airaid SynthaMax Dry Media - Red
723-447 Airaid SynthaMax Dry Media - Blue

**For your Oiled media filter
we suggest using the AIRAID
Filter Tune-Up Kit!**



P/N 790-551 Aerosol Spray
P/N 790-550 Squeeze Spray



Do Not Oil

Synthamax Air Filters do not require oil. Service air filter as needed by cleaning with common non-petroleum all-purpose household cleaner and water. Simple Green®, Formula 409® or equivalent works great. Apply cleaner to outside of air filter and allow to soak. Then flush filter clean from the inside out with a garden hose and repeat steps if necessary. Do not apply high pressure water or air to clean filter. Allow filter to air dry and reinstall.

