

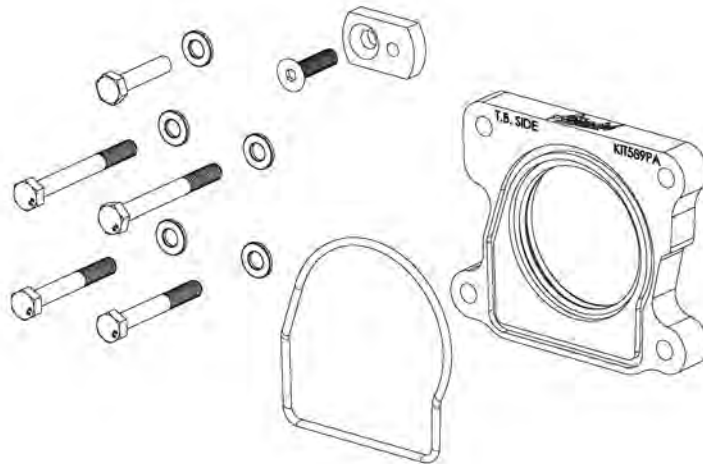


200-589 INSTALLATION INSTRUCTIONS 1999-01 Chevy S-10/GMC S-15 2.2L

Thank you for purchasing the Airaid Throttle Body Spacer. Please read the instruction manual carefully before proceeding with the installation. Your Airaid Throttle Body Spacer was carefully inspected and packaged. Check that no parts are missing, or were damaged during shipping. If you need any assistance please call 1-800-858-3333 to speak with a representative in our Customer Service Center before returning the product.

Thank you for selecting AIRAID.

**THROTTLE BODY SPACERS FOR VEHICLES LISTED
ARE 50 STATE LEGAL. SEE AIRAID.COM FOR CARB
STATUS ON EACH PART FOR A SPECIFIC VEHICLE.**



Parts List

AIR-KIT589PA	Aluminum Plate	(1)
AIR-KIT589H	Hardware	(1)
	"O" Ring	(1)
	Extension Plate	(1)
	Flat Head Screw 6mm x 20mm	(1)
	Bolt 6mm x 30mm	(1)
	Bolts 6mm x 60mm	(2)
	Bolts 6mm x 75mm	(2)
	Flat Washers 6mm	(5)

Tools List

10mm Socket
Ratchet
4mm Allen Wrench
Flat Head Screwdriver

Installation Instructions. Read Me!

1. **DISCONNECT NEGATIVE (-) BATTERY CABLE.**
2. Remove throttle body air intake system.
3. Remove bolts, nuts, and studs from throttle body and manifold (**Ref. "B"**).
4. Install spacer using (4) 6mm bolts (**Ref. "B"**).
5. Install (1) extension plate using (1) 6mm flat head screw (**Ref. "C"**).
6. Inspect & Test throttle linkage for full open & closed travel before driving. Some cruise or kick-down cables may require adjustment. Refer to service manual for proper adjustment.
7. Reinstall air intake system using (**Step 2**) as an example.
 - * **Note:** Use furnished 6mm x 30mm bolt & 6mm washer for air box support.
8. Reconnect battery cable. Enjoy!

The sound of power...The "whistle" means its working!

Extension Plate
Flat Head Screw 6mm x 20mm
Bolt 6mm x 30mm (Air box Support)
Ref. C- Flat Washer 6mm (Air box Support)



Ref. A- Spacer
"O" Ring

Ref. B- Bolts 6mm x 75mm (Top)
Bolts 6mm x 60mm (Bottom)

AIR-I20589C
Rev. 09.29.20