



Installation Instructions

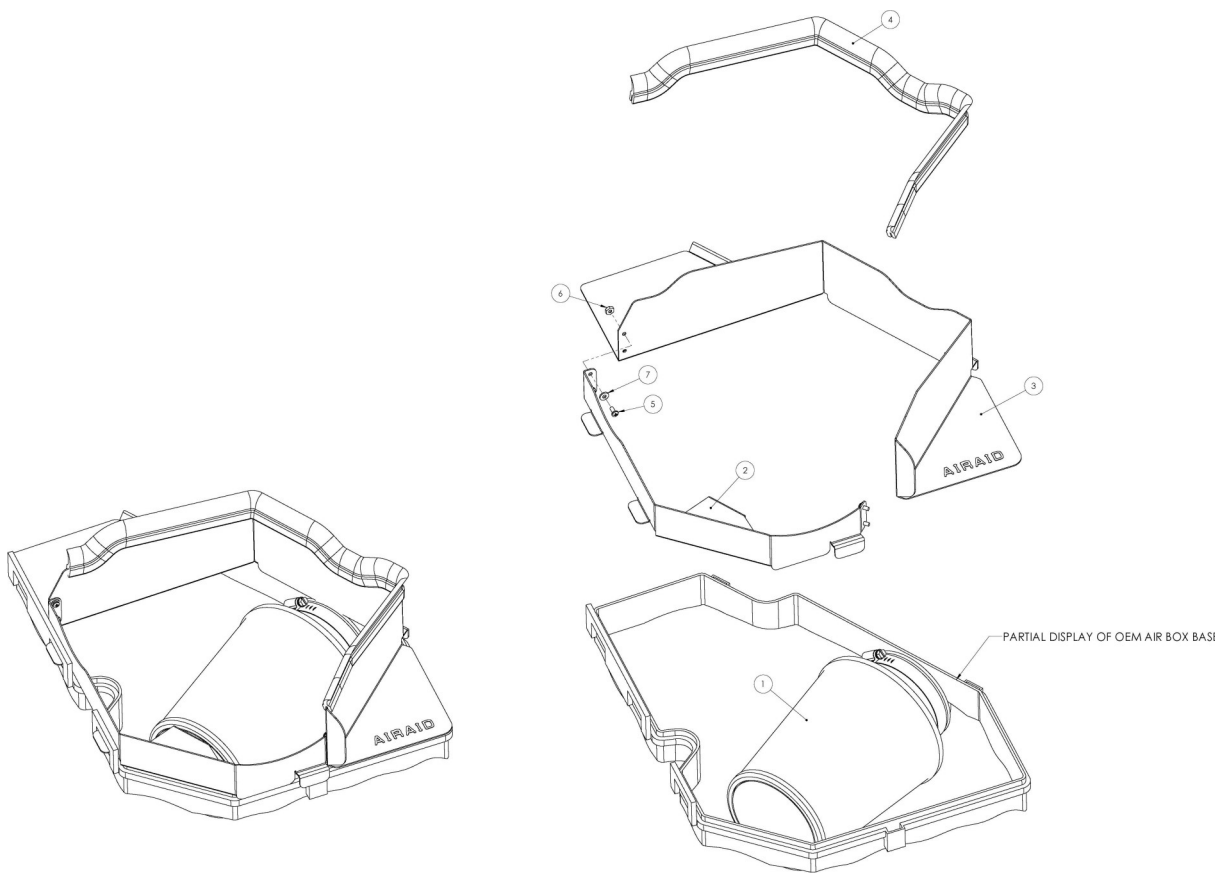
For Part Numbers:

200-142	700-451 Airaid Oiled Media Filter
201-142	701-451 SynthaMax Dry Media Filter - Red
202-142	702-451 SynthaMax Dry Media Filter - Black
203-142	703-451 SynthaMax Dry Media Filter - Blue

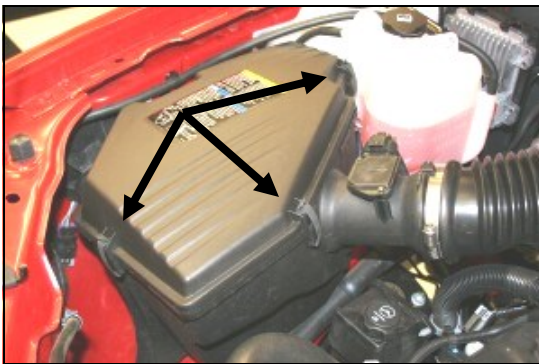
2004-07 Chevrolet Colorado/GMC Canyon
 2006-07 Isuzu i-280/ i-290/ i-350/ i-370
 2.8L I4, 2.9L I4, 3.5L I5, 3.7L I5

Component Identification

1.	Airaid Premium Filter	1
2.	Black Front Panel	1
3.	Black Back Panel	1
4.	Weather Strip 23 1/2"	1
5.	6-32x 5/16" Screw	4
6.	6-32 Keps Nut	4
7.	#6 Flat Washer	4
8.	Airaid Decal	1



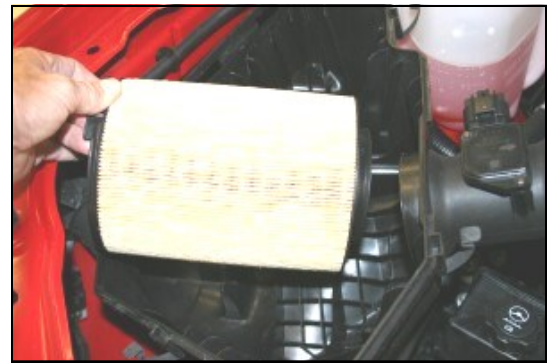
Full color instructions can be viewed on our web site at Airaid.com. Use the **Product Search** function to find your part number, and click **View Details**.



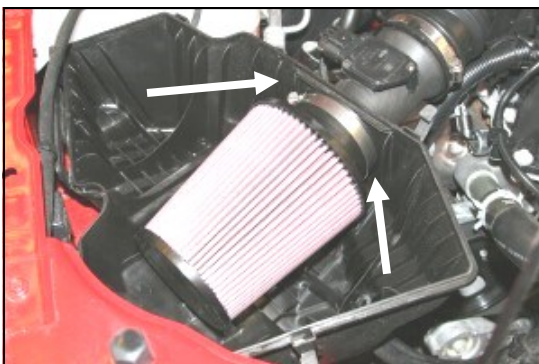
1. **Disconnect negative battery cable.**
 Unlatch three clips that hold down the factory airbox lid.



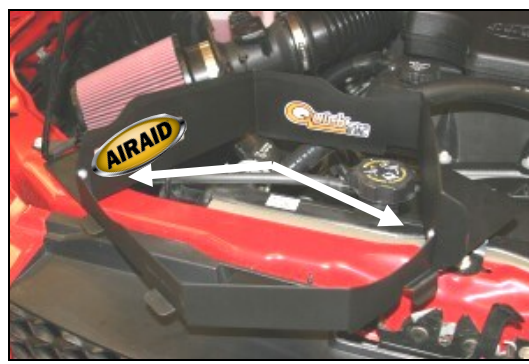
2. Remove the factory airbox lid, and set it aside.



3. Remove the factory air filter, and set it aside.



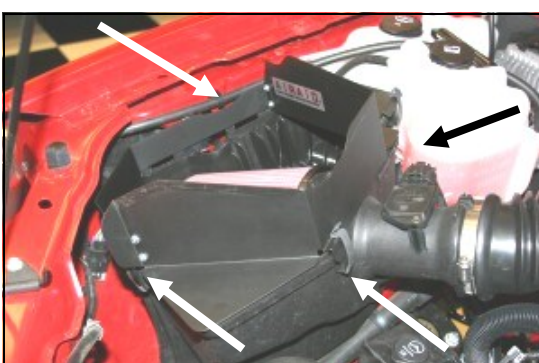
4. Install the Airaid Premium Filter (#1) on the factory tube inside the airbox. Make sure the hose clamp and filter, are tight against the wall of the airbox, and tighten the clamp.



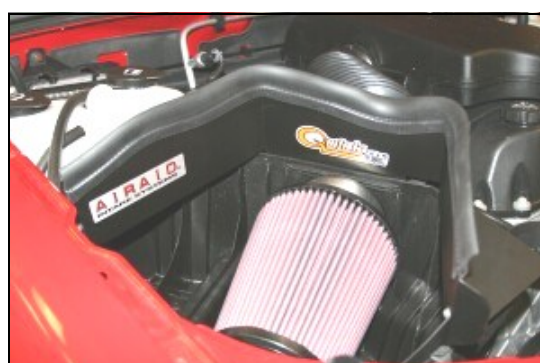
5. Assemble the Quick Fit panels (#2) using the four 6-32x5/16" screws (#5), #6 washers (#7), and nuts (#6). Apply the Airaid Foil Decal onto the Panel as shown.



6. Install the Quick Fit panels by inserting the tab on the front of the panel into the front slot of the factory airbox base (A), and then rotating the panels counterclockwise.



7. Make sure the second tab is aligned in the rear slot of the factory airbox, and then adjust the Quick Fit panels to fit squarely on top of the airbox, and then relatch the three factory clips.



8. Install the provided weather strip (#4) on the top of the Quick Fit panels. For ease of installation, start next to the fender and work your way towards the front of the vehicle.

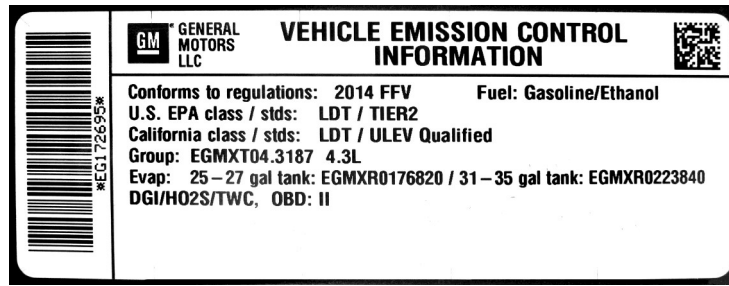


9. Congratulations on installing your new intake system! See the back of this page for further instructions.

10. Double check your work!

Make sure there is no foreign material in the intake path. Make sure all clamps, hoses, bolts, and screws are tight.

11. Reconnect the negative battery cable!



WARNING! If your vehicle has a Vehicle Emission Control Information decal affixed to the factory airbox, a new replacement label must be obtained and installed in a readily visible position in the engine compartment in order to remain CARB compliant. Failure to do so will prevent the vehicle from passing a smog check. Replacement labels can be ordered from your local dealership. Regulations state that the VEI label shall not be affixed to any equipment which is easily detached from the vehicle. Label placement, under the hood on a painted surface is recommended.

Thank you for purchasing the Airaid Intake System. Contact Airaid @ (800) 498-6951 8:00 AM - 5:00 PM MST weekdays for questions regarding fit or instructions that are not clear to you. Your Airaid Intake System was carefully inspected and packaged. Check that no parts are missing, or were damaged during shipping. If any parts are missing, contact Airaid. The air filter element is protected from direct exposure to water and debris; care should be taken not to drive through deep water. WATER INGESTION IS THE DRIVERS RESPONSIBILITY! The air filter is reusable and should be cleaned periodically.

FILTER IDENTIFICATION

700-451 Airaid Oiled Media
702-451 Airaid SynthaMax Dry Media - Black

701-451 Airaid SynthaMax Dry Media - Red
703-451 Airaid SynthaMax Dry Media - Blue

**For your Oiled media filter
we suggest using the AIRAID
Filter Tune-Up Kit!**



P/N 790-551 Aerosol Spray
P/N 790-550 Squeeze Spray

SynthaMax®

Do Not Oil

Synthamax Air Filters do not require oil. Service air filter as needed by cleaning with common non-petroleum all-purpose household cleaner and water. Simple Green®, Formula 409® or equivalent works great. Apply cleaner to outside of air filter and allow to soak. Then flush filter clean from the inside out with a garden hose and repeat steps if necessary. Do not apply high pressure water or air to clean filter. Allow filter to air dry and reinstall.

