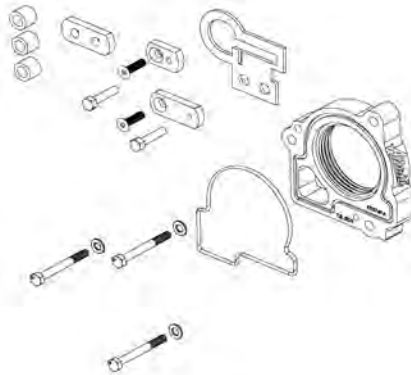




300-574 INSTALLATION INSTRUCTIONS
2003-07 Dodge Dakota 4.7L
2003-07 Dodge Durango 4.7L
2006-07 Mitsubishi Raider 4.7L

Thank you for purchasing the Airaid Throttle Body Spacer. Please read the instruction manual carefully before proceeding with the installation. Your Airaid Throttle Body Spacer was carefully inspected and packaged. Check that no parts are missing, or were damaged during shipping. If you need any assistance please call 1-800-858-3333 to speak with a representative in our Customer Service Center before returning the product.

Thank you for selecting AIRAID.



THROTTLE BODY SPACERS FOR VEHICLES LISTED ARE 50 STATE LEGAL. SEE AIRAID.COM FOR CARB STATUS ON EACH PART FOR A SPECIFIC VEHICLE.

Parts List		
AIR-KIT574PA	Aluminum Plate	(1)
AIR-KIT574H	Hardware	
	"O" Ring	(1)
	Bolts 6mm x 60mm	(3)
	Flat Washers 6mm	(3)
	Extension Plate (1 in.) w/ 6mm Threads	(1)
	Extension Plate (1/2 in.) w/ 6mm Threads	(1)
	Flat Head Screw 6mm x 20mm	(1)
	Flat Head Screw 6mm x 34mm	(1)
	Spacer (5/8") with 1/4" hole	(1)
	Throttle Cable Bracket	(1)
	Spacers .636 Long with 3/8" hole	(2)
	Bolts 3/8-16 x 1 1/2"	(2)
	Nutplate	(1)

*** Also available for your Dodge Dakota/
Durango 4.7L- the Airaid Intake System.
Call for details!**

Tool List
1/4 in. Ratchet
1/4 in. x 12 in. Extension
8mm Socket
10mm Socket
14mm Socket
14mm Box End Wrench
5/32 Allen Wrench

Installation Instructions. Read Me!

1. DISCONNECT NEGATIVE (-) BATTERY CABLE.

2. Remove air intake hose assembly.
3. Remove throttle body air intake box and save bolts.
4. Remove (3) bolts from the throttle body.
5. Unclip throttle & cruise cables from manifold and throttle lever.
6. Install spacer using (3) 6mm x 60mm bolts and flat washers (REF. "A").
7. Assemble cruise and throttle bracket, putting the (2) .636 long spacers on the back side between the bracket and nutplate.
8. Install throttle & cruise cable bracket and tighten bolts (REF. "C").
9. Install both throttle & cruise cables thru reinforcement ring of throttle cable bracket.
 - a. Reattach cables to throttle body lever. * **1st cruise cable then throttle cable.**
 - b. Slide and lock both plastic cable retainers into slot separately.
10. Locate (1) long extension plate using (1) flat head screw to reposition throttle body intake box using saved bolts (REF. "D" step 3).
11. Locate (1) short extension plate with 5/8" thick spacer using (1) flat head screw to reposition throttle body intake using saved bolts (REF. "B" step 3).
12. Inspect & Test throttle linkage for full open and closed travel before driving. Some cruise and kickdown cables may require adjustment. Refer to your vehicles service manual for instruction.
13. Reinstall throttle body air intake assembly using (step 2) as an example. Reconnect Battery Cable.

The sound of power...The "whistle" means its working!

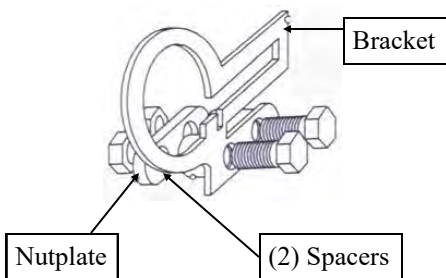


- Ref. A-** (1) Power Plate
 (1) "O" Ring
 (3) Bolts 6mmx60mm
 (3) Flat Washers 6mm

- Ref. D-** (1) Long Extension Plate (1 in.)
 (1) Flat Head Screw 6mm x 20mm

- Ref. B-** (1) Short Extension Plate (1/2) in. with 6mm threads
 (1) Flat Head Screw 6mm x 34mm
 (1) Spacer (5/8) with 1/4 in. hole

Throttle Cable Bracket "Detail"



- (1) Throttle Cable Bracket
 (2) Spacers .636 Long with 3/8" Hole
 (2) Bolts 3/8-16 x 1 1/2"
 (1) Nutplate with 3/8" Threads



Ref. C

AIR-I30574C
 Rev. 09.29.20