



Installation Instructions

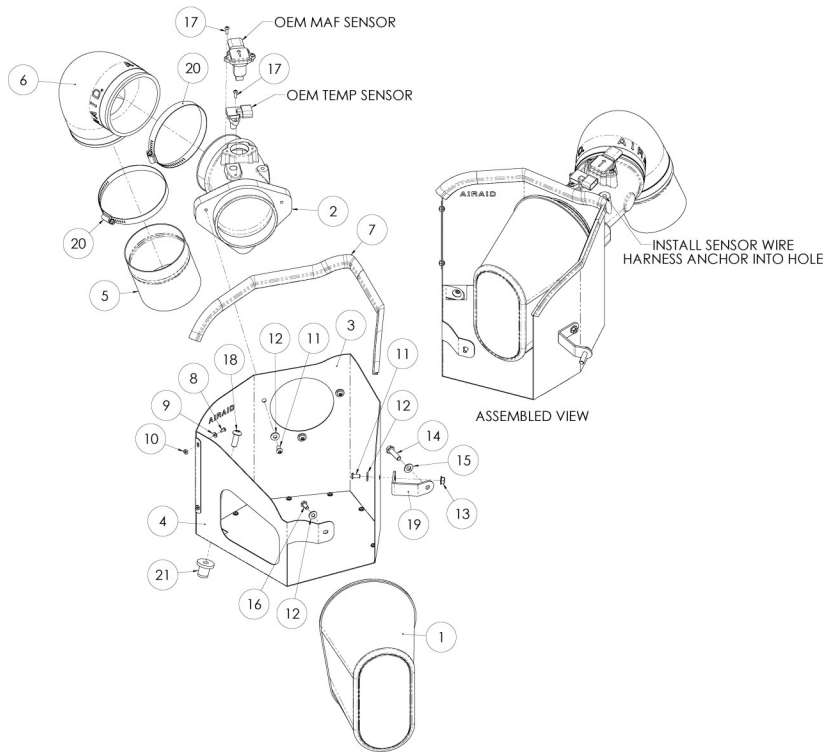
For Part Numbers:

300-209	720-128 Airaid Oiled Media Filter
301-209	721-128 SynthaMax Dry Media Filter - Red
302-209	722-128 SynthaMax Dry Media Filter - Black
303-209	723-128 SynthaMax Dry Media Filter - Blue

2007-09 Dodge Ram 2500-5500
6.7L I6 Cummins Diesel

Component Identification

1.	Airaid Premium Filter	1
2.	Airaid Filter Adapter	1
3.	MAF Panel	1
4.	Bottom Panel	1
5.	Metal Tube	1
6.	4 1/2"x 90° Rubber Elbow	1
7.	Weather Strip 24"	1
8.	6-32x5/16" Screw	7
9.	#6 Flat Washer	7
10.	6-32 Keps Nut	7
11.	1/4-20 x 1/2" Button Head Bolt	4
12.	1/4" Flat Washer	5
13.	1/4" Serrated Nut	1
14.	8mm x 1.25 x 30mm Hex Bolt	1
15.	5/16" Flat Washer	1
16.	6mm x 1 x 12mm Hex Bolt	1
17.	8-32x1/2" Button Head Screw	3
18.	3/8-16 x 1 1/4" Button Head Bolt	1
19.	#193 Bracket	1
20.	#80 Hose Clamp	2
21.	Well Nut	1
22.	T20 Torx Bit	1
23.	Airaid Decal	1



Full color instructions can be viewed on our web site at Airaid.com.



1. Disconnect the negative battery cables.
A) Using the supplied #20 Torx bit, remove two screws from the Mass Air Flow sensor, and one screw from the temperature sensor. Remove both sensors and the wiring harness anchor from the airbox lid, and set them aside. C) Loosen the hose clamp that holds the factory intake tube to the airbox lid.



2. Unsnap the two metal clips that hold the airbox lid to the base, and remove the lid. Next, remove the factory paper air filter from the base.



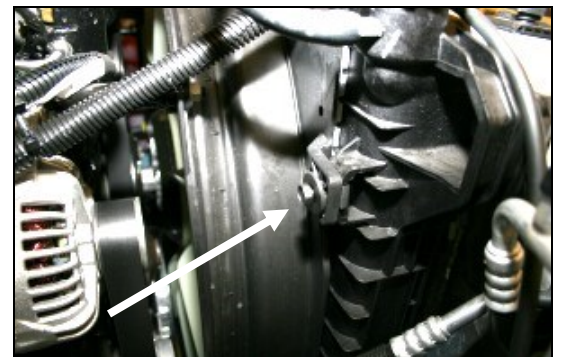
3. Using a 10mm socket, remove the nut that holds the front of the airbox base and grommet assembly to the radiator support.



4. Gently rock the airbox base back and forth while pulling up, to remove it from its mounting grommets, and remove it from the vehicle.



5. Loosen the factory hose clamp at the base of the factory plastic intake tube assembly, and remove the tube from the vehicle.



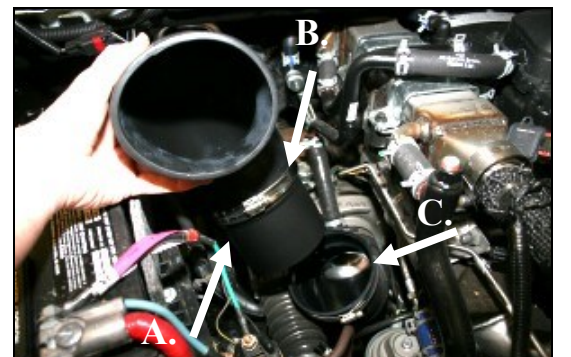
6. Using a 13mm socket, remove the factory bolt that holds the fan shroud to the radiator.



7. Remove the two factory rubber grommets that held the factory airbox base in place.



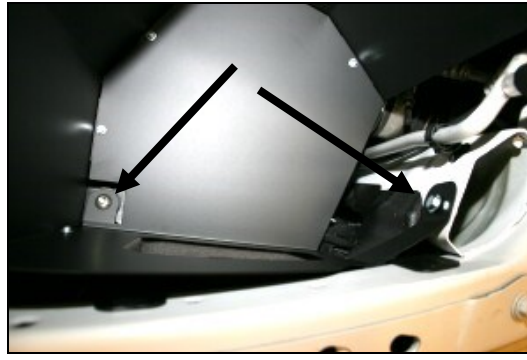
8. Install the supplied well nut (#21) into the support bracket hole that is closest to the fender.



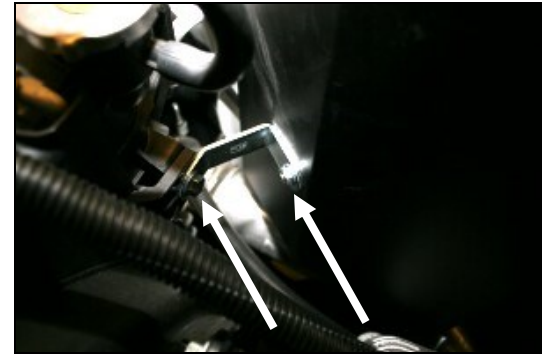
9. A) Install the metal tube (#5) into the rubber elbow (#6) until the rolled bead touches the side. B) Install one #80 hose clamp (#20) around the elbow at the metal tube, and tighten. C) Install the tube assembly into the factory rubber elbow on the turbocharger. Leave the factory hose clamp loose until final adjustments are made.



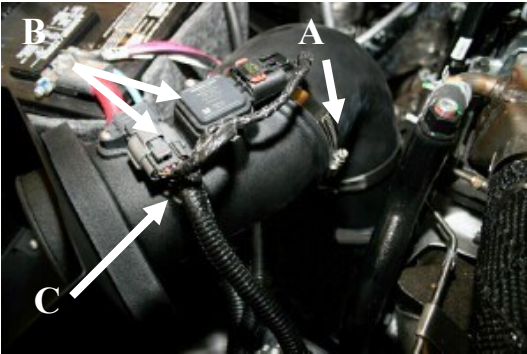
10. Assemble the Cool Air Dam panels as shown using the seven 6-32x5/16" screws (#8), #6 flat washers (#9), and keps nuts (#10). Next install the Airaid filter adapter thru the CAD panel using three 1/4-20x1/2" button head bolts (#11), and 1/4" flat washers (#12). (See Arrow) Apply the Airaid Foil Decal onto the Panel as shown.



11. Install the CAD assembly into the vehicle, and install the 3/8-16x1 1/4" button head bolt (#18) thru the panel, and into the well nut. Next install the 6x1x12mm hex bolt (#16), and 1/4" flat washer (#12), thru the panel, and into the captured nut in the radiator support. Leave all bolts loose until final adjustment.



12. Using one 1/4-20x1/2" button head bolt (#11), 1/4" flat washer (#12), and 1/4" serrated nut (#13), and the 8x1.25x30mm hex bolt (#14), and 5/16" flat washer (#15), mount the supplied bracket (#19) between the CAD panel, and the fan shroud mounting boss as shown. Tighten all CAD mounting bolts at this time.



13. A) Slide the rubber elbow over the Airaid filter adapter, install one #80 hose clamp (#20), and tighten the hose clamp. B) Using three 8-32x1/2" button head screws (#13), reinstall the factory Mass Air Flow sensor, and temperature sensor into the Airaid filter adapter. **Do Not Use The Factory Screws!** C) Reinstall the wiring harness anchor into the hole in the filter adapter just below the temperature sensor.



14. Tighten the factory hose clamp where the Airaid metal tube slips into the factory rubber elbow on the turbocharger.



15. Install the Airaid Premium Filter (#1) onto the Airaid filter adapter, and tighten the hose clamp. Install the weather strip (#7) onto the top of the CAD, starting at the fender, and working your way towards the radiator.

16. Double check your work!

Make sure there is no foreign material in the intake path. Make sure all clamps, hoses, bolts, and screws are tight. Periodically check the tightness of all hose clamps.

17. Reconnect the negative battery cables!

Thank you for purchasing the Airaid Intake System. Contact Airaid @ (800) 498-6951 8:00 AM - 5:00 PM MST weekdays for questions regarding fit or instructions that are not clear to you. Your Airaid Intake System was carefully inspected and packaged. Check that no parts are missing, or were damaged during shipping. If any parts are missing, contact Airaid. The air filter element is protected from direct exposure to water and debris; care should be taken not to drive through deep water. WATER INGESTION IS THE DRIVERS RESPONSIBILITY! The air filter is reusable and should be cleaned periodically.

FILTER IDENTIFICATION

720-128 Airaid Oiled Media
722-128 Airaid SynthaMax Dry Media - Black

721-128 Airaid SynthaMax Dry Media - Red
723-128 Airaid SynthaMax Dry Media - Blue

For your Oiled media filter we suggest using the AIRAID Filter Tune-Up Kit!



P/N 790-551 Aerosol Spray
P/N 790-550 Squeeze Spray



SynthaMax

Do Not Oil

Synthamax Air Filters do not require oil. Service air filter as needed by cleaning with common non-petroleum all-purpose household cleaner and water. Simple Green®, Formula 409® or equivalent works great. Apply cleaner to outside of air filter and allow to soak. Then flush filter clean from the inside out with a garden hose and repeat steps if necessary. Do not apply high pressure water or air to clean filter. Allow filter to air dry and reinstall.