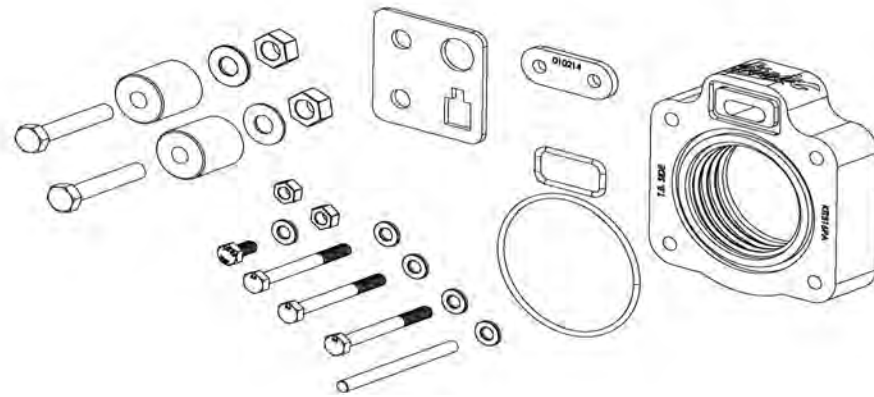




400-516 INSTALLATION INSTRUCTIONS
2001-03 Ford F-150 4.2L
2004 Ford F-150 Heritage 4.2L

Thank you for purchasing the Airaid Throttle Body Spacer. Please read the instruction manual carefully before proceeding with the installation. Your Airaid Throttle Body Spacer was carefully inspected and packaged. Check that no parts are missing, or were damaged during shipping. If you need any assistance please call 1-800-858-3333 to speak with a representative in our Customer Service Center before returning the product.

Thank you for selecting AIRAID.



THROTTLE BODY SPACERS FOR VEHICLES LISTED ARE 50 STATE LEGAL. SEE AIRAID.COM FOR CARB STATUS ON EACH PART FOR A SPECIFIC VEHICLE.

Parts List

AIR-KIT516PA	Aluminum Plate	(1)
AIR-KIT516H	Hardware	(1)
	"O" Ring #230	(1)
	"O" Ring #213	(1)
	6mm x 55mm Bolts	(3)
	6mm x 2 3/4" Allthread	(1)
	6mm Nuts	(2)
	6mm Washers	(5)
	Throttle Cable Bracket	(1)
	Spacers	(2)
	3/8-16 x 1 3/4" Bolts	(2)
	3/8" Flat Washers	(2)
	3/8-16 Nuts	(2)
	Cover Bracket	(1)
	6mm x 12mm Bolt	(1)

Also available for your F-150 4.2L, the Airaid Intake System, p/n 400-115. Call for details!

Tools List

- 10mm Deep Socket
- 8mm Socket
- 10mm End Wrench
- 9/16" Socket
- 9/16" End Wrench
- Ratchet

Installation Instructions. Read Me!

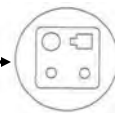
1. **DISCONNECT NEGATIVE (-) BATTERY CABLE.**
2. Remove air intake hose assembly.
3. Remove throttle body linkage cover.
4. Remove (4) bolts from the throttle body.
5. Unclip Throttle & Cruise cables from manifold and throttle lever.
6. Install spacer using (3) 6mm x 55mm bolts, (3) 6mm flat washers. Also (1) Allthread, nut, and washer for the throttle body linkage cover. **(Ref. "A")**
7. Install throttle & cruise cable bracket with (2) spacers, (2) 3/8" bolts, (2) 3/8" washers, and (2) 3/8-16" nuts. **(Ref. "B")**
8. Install both throttle & cruise cables thru throttle cable bracket and reattach cables to throttle body lever.
9. Install throttle linkage cover bracket with 6mm bolt, nut, and washer. **(Ref. "C")**
10. Inspect & Test throttle linkage for full Open & Closed travel before driving. Some cruise and kick down cables may require adjustment. Please refer to your vehicles service manual for proper adjustment.
11. Reinstall throttle body air intake assembly using **Step 2** as an example.
12. Reconnect battery cable. Enjoy!

The sound of power...The "whistle" means its working!

Ref. "A"- (1) Spacer
(2) "O" Rings
(3) 6mm x 55mm Bolts
(4) 6mm Flat Washers
(1) 6mm x 2 3/4" Allthread
(1) 6mm Nut



Ref. "B"- (1) Throttle Cable Bracket
(2) Spacers
(2) 3/8-16 x 1 3/4" Bolts
(2) 3/8" Flat Washers
(2) 3/8-16 Nuts



Ref. "C"- (1) Cover Bracket
(1) 6mm x 12mm Bolt
(1) 6mm Nut
(1) 6mm Washer



AIR-I40516C Rev. 10.27.20

Airaid. 1455 Citrus St., P.O. Box 1329, Riverside, CA. 92502 1-800-498-6951 AiraidInfo@airaid.com