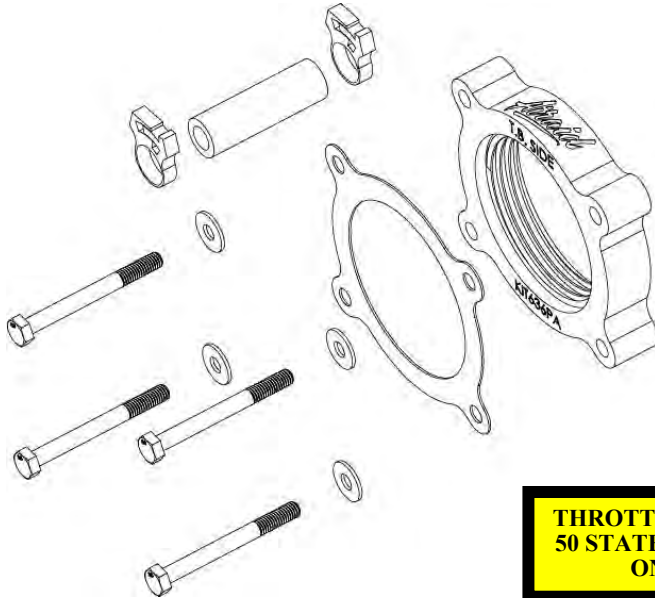




Installation Instructions
Part Number 450-636
2011-14 Ford Mustang
2011-14 Ford F-150
3.71V-6

Note: Because of space constraints, this AIRAID spacer can not be used in conjunction with Airaid intake system 450-265.



Parts List

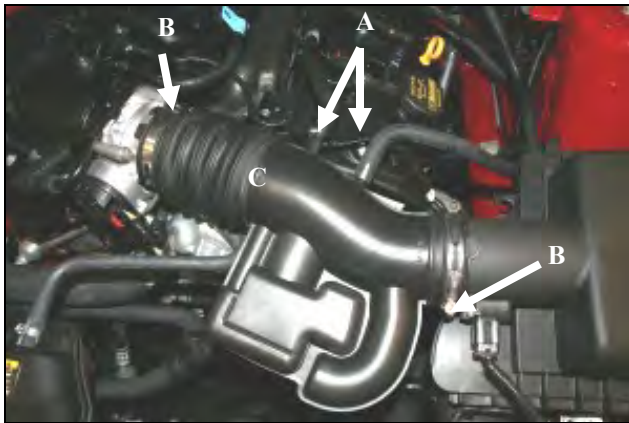
AIR-KIT636PA	Aluminum Plate	(1)
AIR-KIT636G	Gasket	(1)
AIR-KIT63H	Hardware	
	6mmx75mm Bolt	(4)
	6mm Flat Washer	(4)
	Speed clamp	(2)
	3/8" x 2- 3/4" Hose	(1)

Tools Required For Installation

8mm, 10mm Socket
Ratchet and Extension
Pliers

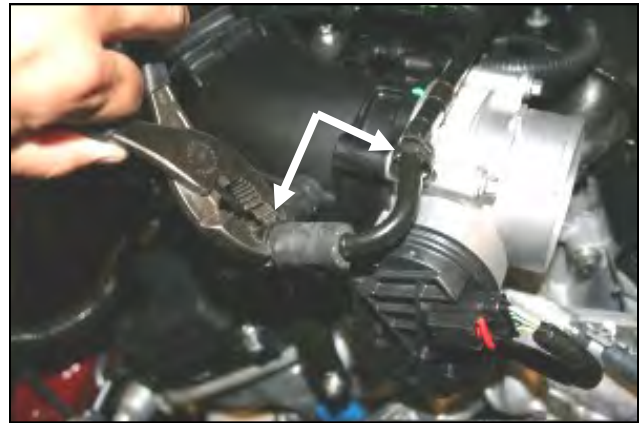
THROTTLE BODY SPACER FOR VEHICLES LISTED ARE 50 STATE LEGAL. SEE AIRAID.COM FOR CARB STATUS ON EACH PART FOR A SPECIFIC VEHICLE.

Thank you for purchasing the AIRAID Throttle Body Spacer. Please read the instruction manual carefully before proceeding with the installation. Your AIRAID Throttle Body Spacer was carefully inspected and packaged. Check that no parts are missing, or were damaged during shipping. If you need any assistance please call 1-800-858-3333 to speak with a representative in our Customer Service Center before returning the product.
Thank you for selecting AIRAID.

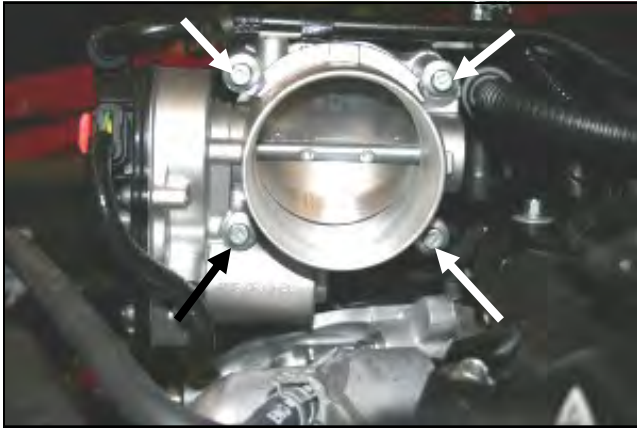


1. Disconnect the negative battery cable!

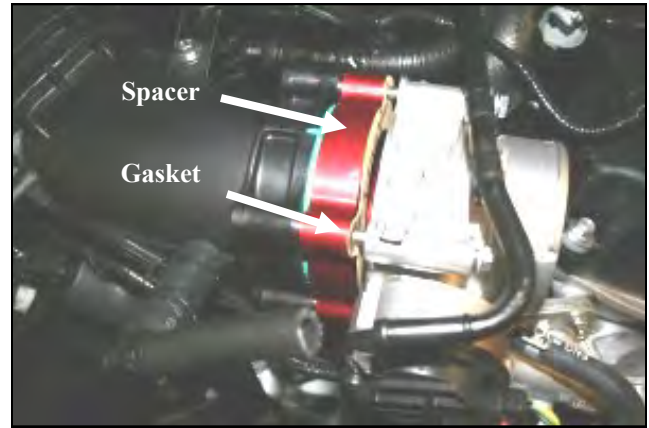
- A.) Disconnect the breather line or lines, from the Factory intake tube.
- B.) loosen the clamps securing the intake tube to the throttle body and the airbox.
- C.) Remove the Factory intake tube and set aside.



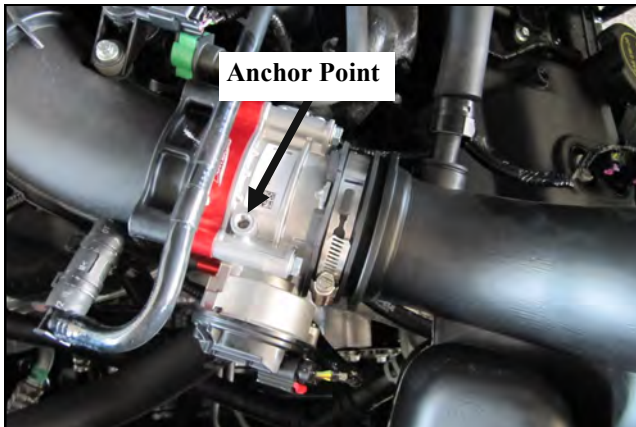
- 2. Using pliers, open the spring clamps and slide off of the factory breather hose, and onto the hard line.



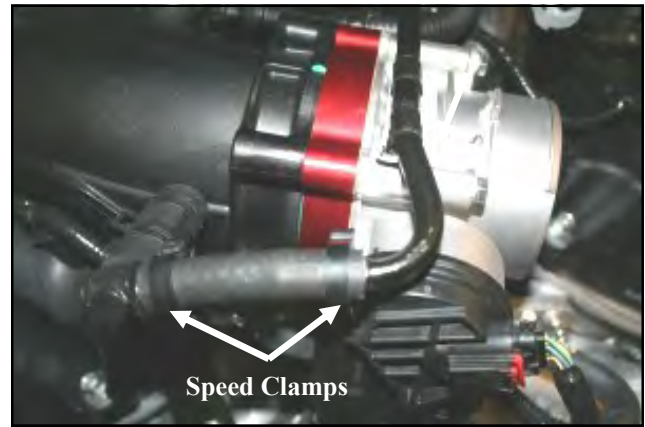
3. Remove the four bolts that secure the throttle body to the intake manifold and set aside. They will not be reused.



4. Position the AIRAID Spacer between the throttle body and the intake manifold with the supplied gasket next to the throttle body as shown. Make sure the "flow" arrow that is printed on the spacer is pointing towards the intake manifold. Insert the provided bolts and washers through the throttle body, gasket, and AIRAID Spacer.



5. If your breather is a two piece line, disconnect the anchor from the throttle body to allow it to remain in position.



6. If you have a three piece breather hose and spring clamps, and replace them with the supplied Breather hose and Speed clamps. Re-torque the throttle body bolts in a X pattern, to Factory specs.



7. Reinstall the intake tube, tighten the two hose clamps, and reconnect the breather line or lines.

Re-connect the negative battery cable!

Contact your nearest Airaid dealer for an Airaid Intake System for your car, truck or SUV.

AIR-145636C
Rev.8/10/20