



Installation Instructions

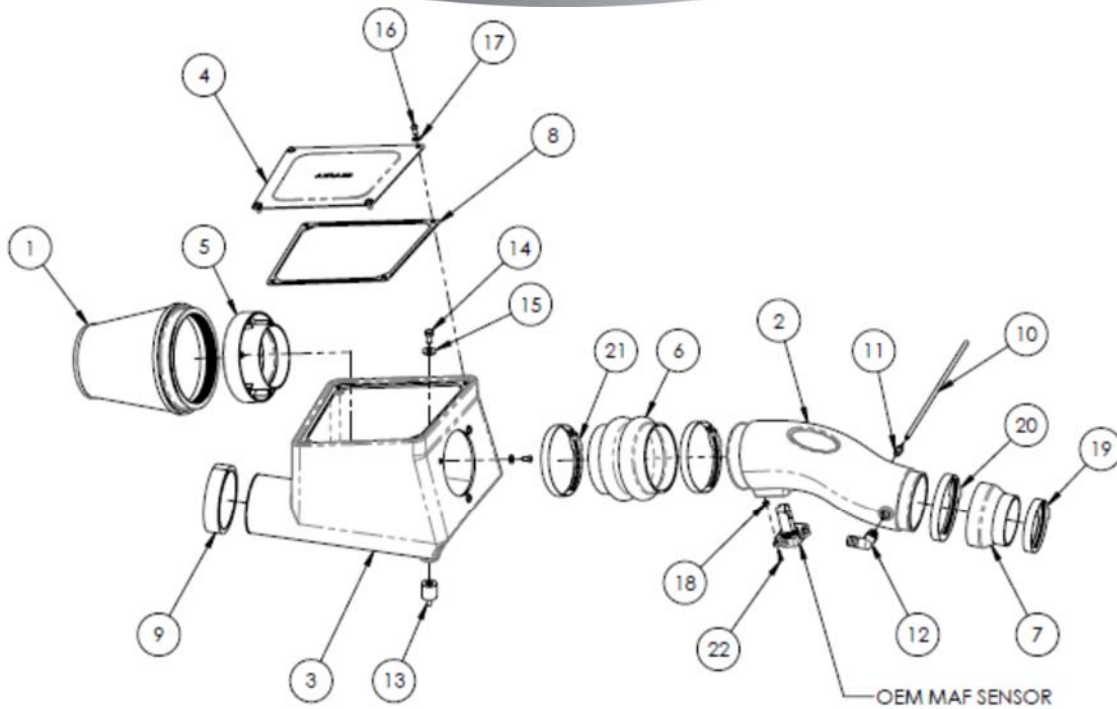
For Part Numbers:

- 510-301 700-462 Airaid Oiled Media Filter
- 511-301 701-462 SynthaMax Dry Media Filter - Red
- 512-301 702-462 SynthaMax Dry Media Filter - Black
- 513-301 703-462 SynthaMax Dry Media Filter - Blue

- 2005-11 Toyota Tacoma 4.0L V6
- 2007-09 Toyota FJ Cruiser 4.0L V6

NOT LEGAL FOR SALE OR USE ON ANY POLLUTION CONTROLLED MOTOR VEHICLE IN CALIFORNIA OR STATES ADOPTING CALIFORNIA EMISSION PROCEDURES.

See AIRAID.COM for CARB status on each part for a specific vehicle.



Component Identification

1.	Airaid Premium Filter	1
2.	Airaid Intake Tube	1
3.	Cold Air Box	1
4.	Air Box Lid	1
5.	Filter Adapter	1
6.	Hump Hose	1
7.	Reducing Coupler	1
8.	Airbox Gasket	1
9.	Foam Weather Strip	1
10.	1/8 x 20 1/2" Vacuum Line	1
11.	1/8 NPT Barbed Fitting	1
12.	3/8 NPT Barbed Elbow	1
13.	M8 CAB Mount	3
14.	8 mm x 1.25 x 16 Bolt	3
15.	5/16 Flat Washer	3
16.	1/4-20 x 1/2 Button Head Bolt	7
17.	1/4 Flat Washer	7
18.	#8 spacer	2
19.	#48 Hose Clamp	1
20.	#64 Hose Clamp	1
21.	#68 Hose Clamp	2

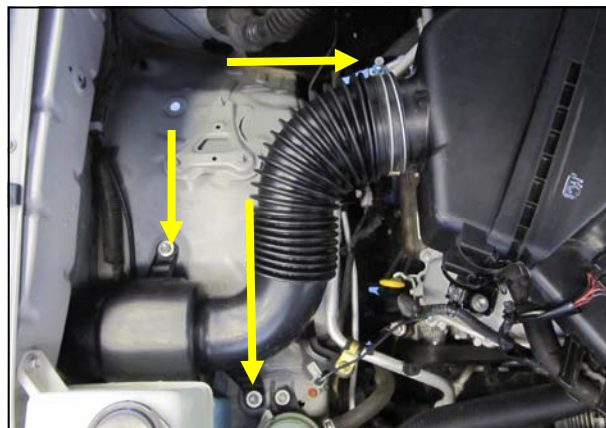
Note: This intake system is not compatible with the factory engine cover.

Full color instructions can be viewed on our web site at Airaid.com. If you need any assistance please call 1-800-858-3333 to speak with a representative in our Customer Service Center before returning the product.

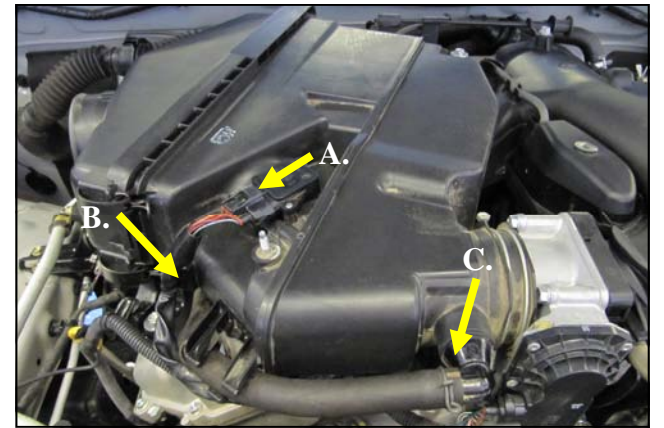


Disconnect The Negative Battery Terminal.

1. Using a 10mm Socket, remove the two acorn nuts on the top of the motor and remove the engine cover.



2. Loosen the clamp on the factory intake tube and remove the two 8mm bolts securing the other end on the inner fender. Slide the intake tube out from the inner fender hole and set it aside.

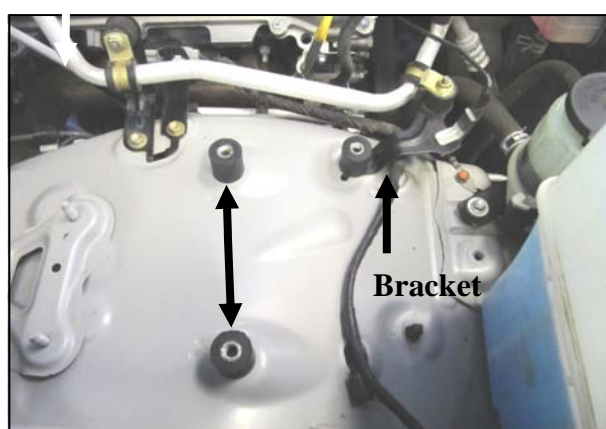


3. A.) Disconnect the Mass Air Flow meter.
B.) Pry the wire harness anchor out of the airbox.
C.) Disconnect the crankcase breather line.



4. Remove the factory airbox

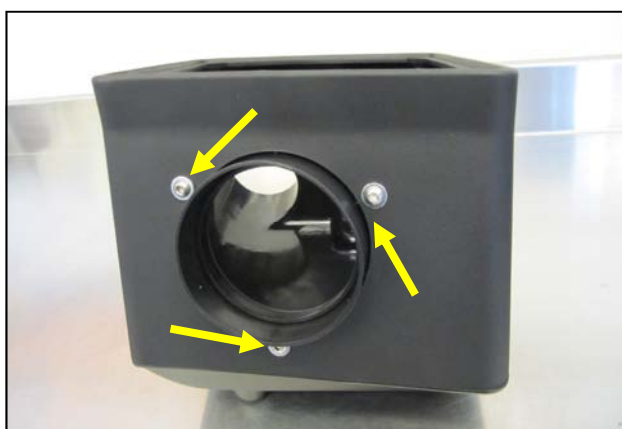
Loosen the clamp on the throttle body side of the factory airbox and remove the two 6mm bolts securing it to the motor. Remove the entire airbox assembly from the vehicle.



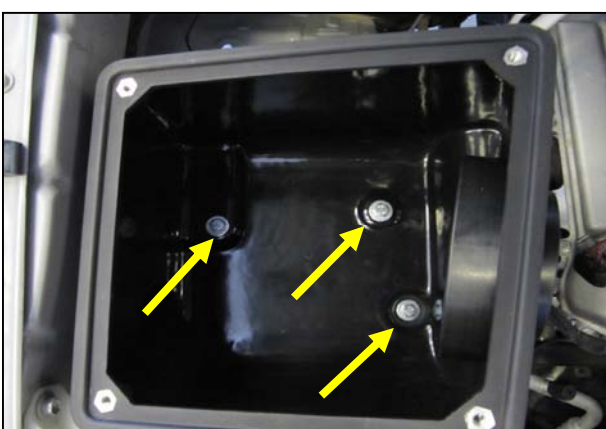
5. Install two of the M8 CAB Mounts (#13), hand tight, into the weld nuts on the inner fender as shown. Use the third CAB Mount to replace the 8mm bolt holding the A/C bracket.



6. Apply the self adhesive, Foam Weatherstrip (#9) onto the air inlet on the Cold Air Box (#3).



7. Mount the Filter Adapter (#5) to the Cold Air Box, as shown, using three 1/4-20 x 1/2" Button head Bolts (#16) and 1/4" Flat Washers (#17).



7. Mount the Cold Air Box onto the CAB Mounts using the three 8mm Bolts (#14) and 5/16 Flat Washers (#15).



8. Transfer the Mass Air Flow sensor from the factory airbox, into the Airaid Intake tube and secure using the two #8 Spacers (#18) and 8-32 Socket Head screws (#22). **Do not use the factory screws.**



9. Install the 1/8" and 3/8" barbed fittings (#s 11 and 12) into the Airaid Intake Tube. Apply the Airaid Bubble Decal onto the Intake Tube as shown.



10. Slide the Hump Hose (#6), and two #68 Hose Clamps (#21), onto the Intake Tube as shown. Slide the Reducing Coupler (#7) and the #48 (#19) and #64 Clamps (#20) on the other end of the Intake Tube. Leave the Clamps loose for now.



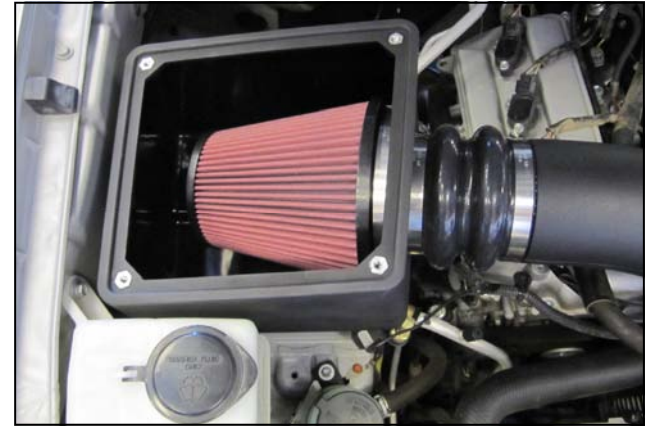
11. Install the Airaid Intake Tube onto the Cold Air Box and the throttle body, align and tighten all four of the Clamps. Reconnect the Mass Air Flow sensor.



12. replace the OEM vacuum line on the fuel pressure regulator with the supplied 20 1/2" 1/8" line. Connect the 1/8" line to the small Fitting on the Intake tube.



13. Connect the factory crank case breather line to the 3/8 Barbed Elbow on the Intake Tube.



13. Install the Airaid Premium Filter onto the Filter Adapter inside of the airbox and tighten the clamp..



15. Place the Gasket (#8) onto the underside of the Air Box Lid (#4) and peel off the protective film. Mount the lid on the Air Box using four 1/4-20 x 1/2" Button Head Bolts (#16), and 1/4" Flat washers (#17).



16. Double check your work!

Make sure there is no foreign material in the intake path. Make sure all clamps, hoses, bolts, and screws are tight. Double check the hood clearance!

Reconnect the negative battery cable!



Pre Filter Option- Part Number 799-445

For maximum protection in the harshest of environments Airaid offers a slip on Pre Filter.

- Prolongs Cleaning Intervals
- Water Repellant
- Free Flowing Protection

Thank you for purchasing the Airaid Intake System. Contact Airaid @ (800) 498-6951 8:00 AM - 5:00 PM MST weekdays for questions regarding fit or instructions that are not clear to you. Your Airaid Intake System was carefully inspected and packaged. Check that no parts are missing, or were damaged during shipping. If any parts are missing, contact Airaid. The air filter element is protected from direct exposure to water and debris; care should be taken not to drive through deep water. WATER INGESTION IS THE DRIVERS RESPONSIBILITY! The air filter is reusable and should be cleaned periodically.

FILTER IDENTIFICATION

- 700-462 Airaid Oiled Media
- 702-462 Airaid SynthaMax Dry Media - Black

For your Oiled media filter we suggest using the AIRAID Filter Tune-Up Kit!



P/N 790-551 Aerosol Spray
P/N 790-550 Squeeze Spray



NOT LEGAL FOR SALE OR USE ON ANY POLLUTION CONTROLLED MOTOR VEHICLE IN CALIFORNIA OR STATES ADOPTING CALIFORNIA EMISSION PROCEDURES.

See AIRAID.COM for CARB status on each part for a specific vehicle.

- 701-462 Airaid SynthaMax Dry Media - Red
- 703-462 Airaid SynthaMax Dry Media - Blue

SynthaMax

Do Not Oil

Synthamax Air Filters **do not** require oil. Service air filter as needed by cleaning with common non-petroleum all-purpose household cleaner and water. Simple Green®, Formula 409® or equivalent works great. Apply cleaner to outside of air filter and allow to soak. Then flush filter clean from the inside out with a garden hose and repeat steps if necessary. Do not apply high pressure water or air to clean filter. Allow filter to air dry and reinstall.