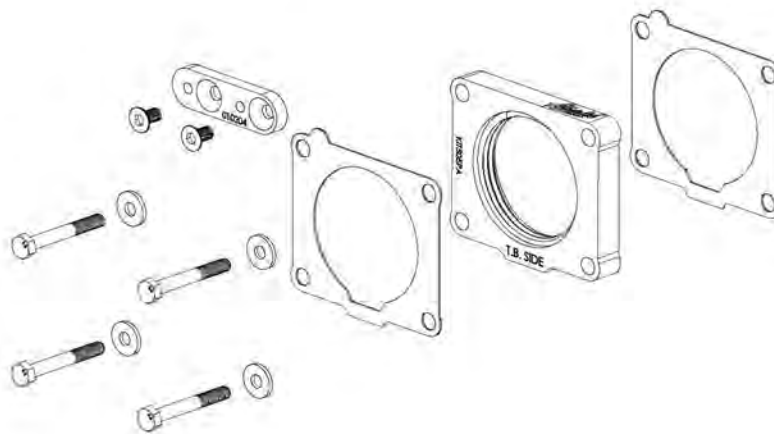




520-505 INSTALLATION INSTRUCTIONS 99-04 Nissan Xterra/Frontier 3.3L

Thank you for purchasing the Airaid Throttle Body Spacer. Please read the instruction manual carefully before proceeding with the installation. Your Airaid Throttle Body Spacer was carefully inspected and packaged. Check that no parts are missing, or were damaged during shipping. If you need any assistance please call 1-800-858-3333 to speak with a representative in our Customer Service Center before returning the product.

Thank you for selecting AIRAID.



THROTTLE BODY SPACERS FOR VEHICLES LISTED ARE 50 STATE LEGAL. SEE AIRAID.COM FOR CARB STATUS ON EACH PART FOR A SPECIFIC VEHICLE.

Parts List		
AIR-KIT505PA	Aluminum Plate	(1)
AIR-KIT505G	Gasket	(2)
AIR-KIT505H	Hardware	
	8mm x 50mm Bolts	(4)
	8mm Flat Washers	(4)
	Linkage Plate	(1)
	6mm x 12mm Flat Head Screws	(2)

Also available for your 00-04 Nissan Xterra/
Frontier, the Airaid Intake System p/n 520-130.
Please call for details!

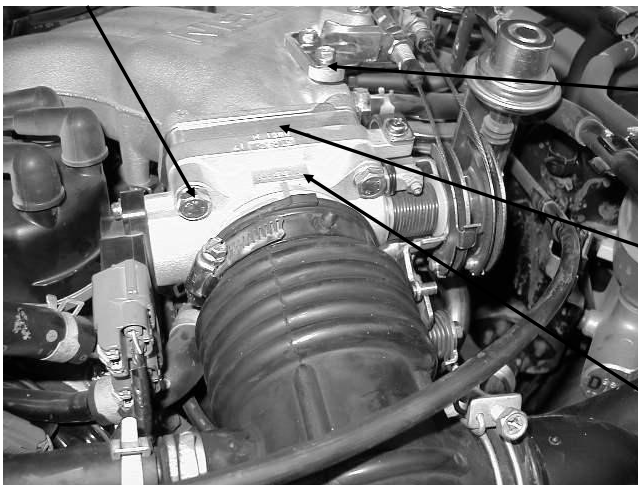
Tools List
13mm Socket
13mm Box Wrench
3mm Hex Key
Standard Screwdriver

Installation Instructions. Read Me!

1. **DISCONNECT NEGATIVE (-) BATTERY CABLE.**
2. Remove throttle body air intake assembly.
3. Remove (4) bolts from the throttle body. (Ref. "C")
4. Remove gasket and clean surfaces.
5. Remove bolts from the throttle linkage bracket and save.
6. Install power plate with (2) gaskets. (Ref. "A" & "B")
 - A. Install one gasket between the throttle body and spacer.
 - B. Install second gasket between the spacer and manifold.
7. Replace (4) bolts and washers (Ref. "C") using Step 3 as an example.
8. Install throttle linkage plate using (2) 6mm flat head screws. (Ref. "D")
9. Reinstall the throttle linkage bracket using saved bolts. Refer to Step 5.
10. Inspect & Test the throttle linkage for full open & closed travel before driving. Some cruise or kickdown cables may require adjustment. Please refer to your vehicles service manual for proper adjusting.
11. Reinstall the throttle body air intake assembly using Step 2 as an example.
12. Reconnect battery cable. Enjoy!

The sound of power...The "whistle" means its working!

Ref. "C"- (4) 8mm x 50mm Bolts
(4) 8mm Flat Washers



Ref. "D"- (1) Linkage Plate
(2) 6mm x 12mm Flat Head Screws

Ref. "A"- (1) Spacer
(2) Gaskets

Ref. "B"- Throttle Body

AIR-I52505C
Rev. 10.27.20