

# INSTALLATION INSTRUCTIONS

2010 & 2012 FORD TRANSIT CONNECT REAR STEP

Part # 11130RB

## PARTS LIST:

Qty	Description	Qty	Description
1	Rear Step bar	6	12mm Lock Washers
1	Driver/Left Rear Mounting Bracket	4	12mm Nuts
1	Passenger/Right Rear Mounting Bracket	4	10mm x 35mm Hex Bolts
2	Driver/Passenger Brace Brackets	8	10mm Flat washers
2	12mm x 38mm T-Bolts	4	10mm Lock Washers
2	12mm Nut Plates	4	10mm Nuts
8	12mm Flat Washers	2	12mm Plastic Retainers



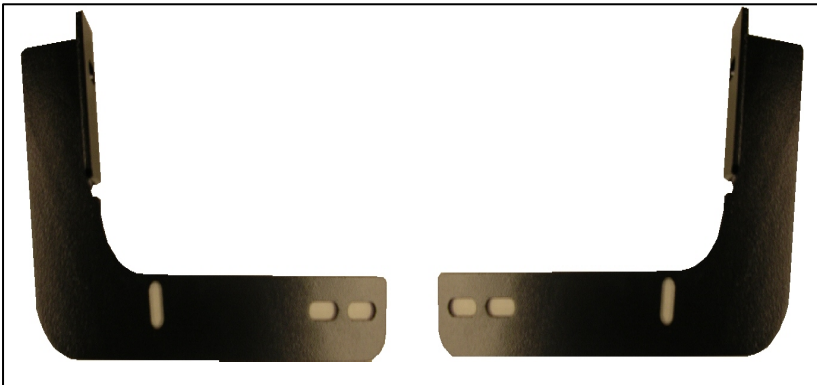
Rear Step Bar

Driver  
Brace Bracket

Passenger  
Brace Bracket

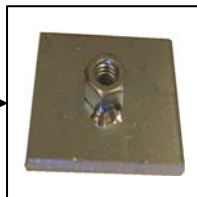
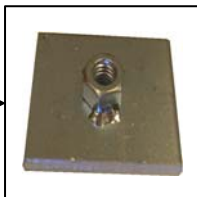
Driver/Left Mounting  
Bracket

Passenger/ Right  
Mounting Bracket



12MM T-Bolts shown  
with plastic retainer's  
washers & nuts

12mm Nut  
Plates



## PROCEDURE:

- 1. REMOVE CONTENTS FROM BOX. VERIFY ALL PARTS ARE PRESENT. READ INSTRUCTIONS CAREFULLY BEFORE STARTING INSTALLATION.**
2. Starting with the Passenger/Right side-Rear of the vehicle, located the oblong hole just under the back side of bumper wear the rear cross frame is near the spare tire, insert the Nut plate into the lower oblong hole. **(Fig 1,1A &1B)** shows location and nut plate placed into hole.
3. Next, select the T-bolt & plastic retainer from the list of parts above, thread the plastic retainer onto the threads of the T-bolt, place the T-bolt into the. Passenger/Right side of the cross frame rail, and tighten the plastic retainer against the panel so the bolt does not fall in. **(Fig 2)** shows T Bolt placed into cross frame. Once done secure the mount bracket to the T-bolt with the 12mm flat washer, 12mm lock washer and 12mm nut **(Fig 2A)** shows bracket attached to T bolt. Followed by the 12mm flat washer, 12mm lock washer and the 12mm bolt, secure to Nut plate **(Fig 2B)** shows bracket attached to Nut plate. Snug but do not tighten hardware at this time.
4. Repeat steps 2-3 for Driver/left mount bracket.
5. Select the rear bumper step and attach to the Passenger/right side & Driver/left side mount brackets with the included (4) 10mm x 35mm hex bolts, (4) 12mm lock washer, (8) 10mm flat washer and (4) 10mm Nuts. **(Fig 3)** shows Passenger/right side bracket attached to rear bumper step, Snug but do not tighten hardware at this time.
6. Level and align Rear bumper step properly; then tighten all hardware at this time.
7. Do periodic inspections to the installation to make sure all hardware is secure and tight.

**To protect your investment**, wax this product after installing. Regular waxing is recommended to add a protective layer over the finish. Do not use any type of polish or wax that may contain abrasives that could damage the finish.

**For stainless steel:** Aluminum polish may be used to polish small scratches and scuffs on the finish. Mild soap may be used also to clean the Product.

**For gloss black finishes:** Mild soap may be used to clean the Product

**PASSENGER SIDE SHOWN**

