



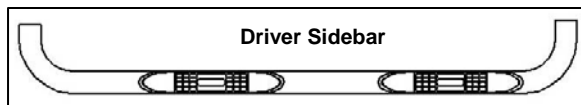
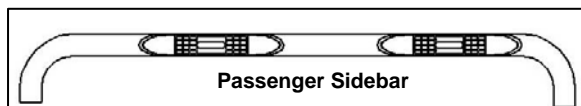
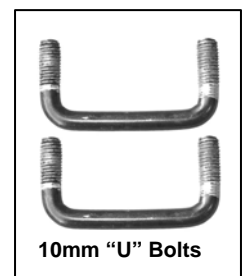
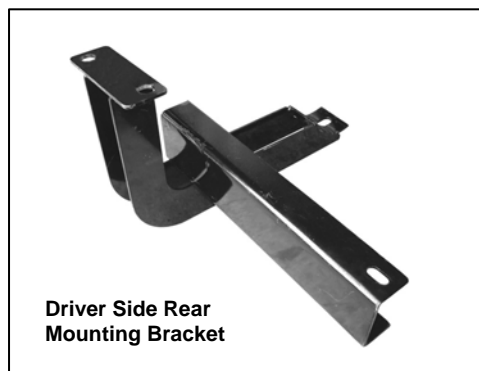
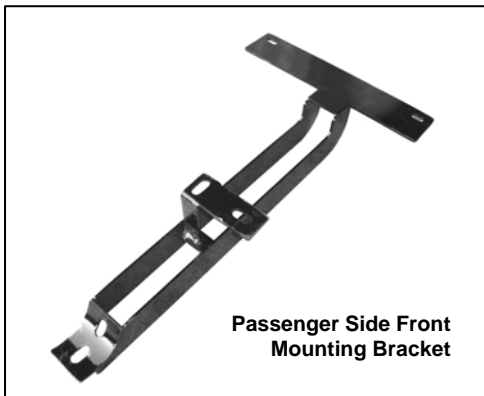
## INSTALLATION INSTRUCTIONS

SIDEBAR PART # 200101-2/200101

04-08 HYUNDAI TUCSON / 04-08 KIA SPORTAGE

### PARTS LIST:

1	Driver/Left Sidebar	4	10mm Lock Washers
1	Passenger/Right Sidebar	4	10mm Hex Nuts
1	Driver/Left Front Mounting Bracket	4	10mm ID x 21mm OD x 1.5mm Flat Washers
1	Passenger/Right Front Mounting Bracket	2	8-1.25mm x 20mm Bolt Plate (35x20 plate size)
1	Driver/Left Rear Mounting Bracket	8	8-1.25mm x 25mm Hex Head Bolts
1	Passenger/Right Rear Mounting Bracket	10	8mm Lock Washers
2	10-1.50mm "U" Bolts	2	8mm Hex Nuts
		10	8mm ID x 22mm OD x 1.5mm Flat Washers
		5	6-1.00mm x 25mm Hex Head Bolts
		5	6mm Lock Washers
		5	6mm ID x 18mm OD x 1.5mm Flat Washers



## PROCEDURE:

1. REMOVE CONTENTS FROM BOX. VERIFY ALL PARTS ARE PRESENT. READ INSTRUCTIONS CAREFULLY BEFORE STARTING INSTALLATION. SOME CUTTING REQUIRED.

### Driver Side Front Mounting Bracket Installation:

2. Remove the factory screw on the inside of the frame rail located by the front of the vehicle (**Figure 1**).
3. In the same direction where the factory screw is located there is a plastic plug covering the factory hole in the side panel. Use a flat screw driver to remove the plastic plug (**Figure 1**). **NOTE:** This plastic plug is covered with tar and is very hard to find it. Push along the side panel until you feel a soft spot.
4. Insert one of the 8mm x 20mm Bolt Plates into the factory hole in the side panel (**Figure 2**).
5. Position Bracket up to the vehicle, and partially attach the outside of the Bracket to already inserted bolt plate using the included (1) 8mm Hex Nut, (1) 8mm Lock Washer, and (1) 8mm Flat Washer (**Figure 3 & 4**).  
**NOTE:** 04-05 Models mount in the hole towards the rear of the vehicle and 06-08 Models mount in the hole towards the front of the vehicle.
6. Attach the inside of the Bracket to previously removed factory bolt mounting location. Replace the factory bolt with the included (1) 6mm x 25mm Hex Head Bolt, (1) 6mm Lock Washer, and (1) 6mm Flat Washer (**Figure 3 & 5**). Do not tighten at this time.

### Passenger Side Front Mounting Bracket Installation:

7. Remove the two factory bolts holding the outside of the heat shield (**Figure 6**). **NOTE:** You will be replacing these factory bolts with the included 6mm hardware.
8. Slightly pull down on the heat shield and place Bracket between the heat shield and the side rail. Temporarily install the Bracket without the heat shield with the included (2) 6mm x 25mm Hex Head Bolts, (2) 6mm Lock Washers, and (2) 6mm Flat Washers. Push back the heat shield until it reaches the Bracket and mark the cutting location on the heat shield (**Figure 7**).
9. Remove Bracket from vehicle and use a pair of sheet metal cutting scissors to cut out the marked location.
10. In the same direction where the front factory screw is located there is a plastic plug covering the factory hole in the side panel. Use a flat screw driver to remove the plastic plug (**Figure 6**). **NOTE:** This plastic plug is covered with tar and is very hard to find it. Push along the side panel until you feel a soft spot.
11. Insert one of the 8mm x 20mm Bolt Plates into the factory hole in the side panel (**Figure 8**).
12. Position Bracket up to the side rail and place heat shield over Bracket. Attach heat shield and Bracket to side rail using the hardware listed in step six (**Figure 9**).
13. Attach the outside of the Bracket to already inserted Bolt Plate using the included (1) 8mm Hex Nut, (1) 8mm Lock Washer, and (1) 8mm Flat Washer (**Figure 10**). Do not tighten at this time. **NOTE:** 04-05 Models mount in the hole towards the rear of the vehicle and 06-08 Models mount in the hole towards the front of the vehicle.

### Rear Mounting Brackets Installation:

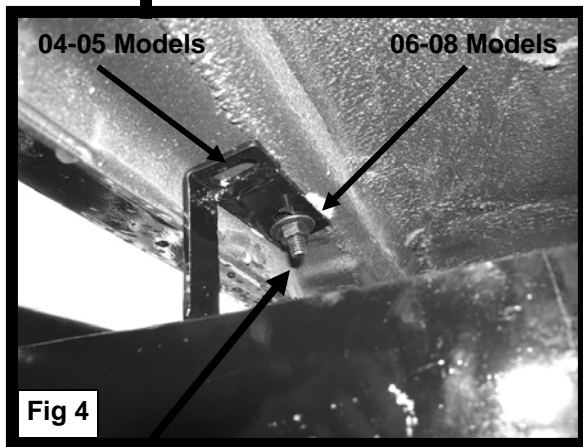
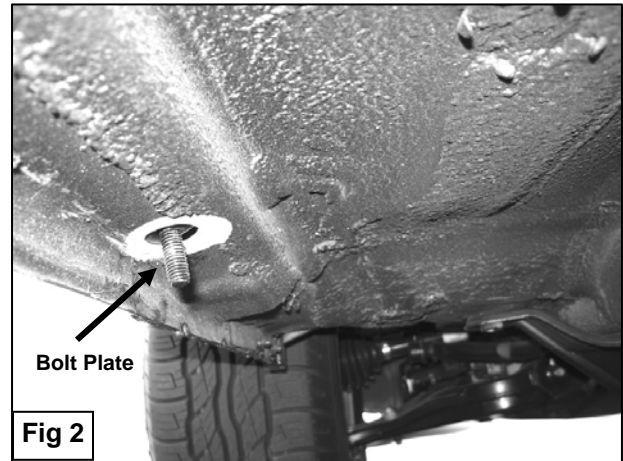
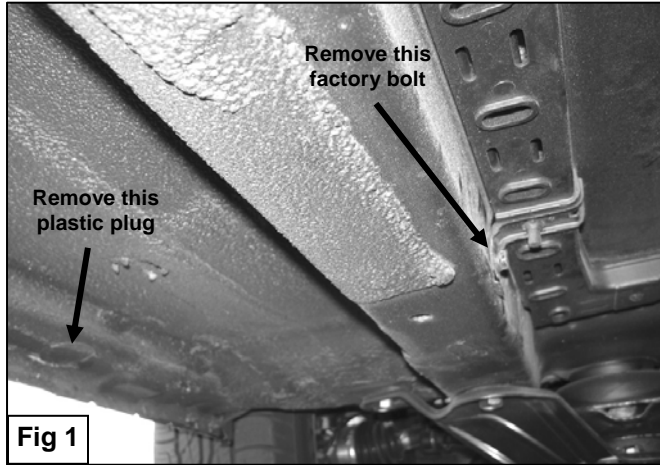
14. Starting on the driver side, remove the oval shape rubber plug and the round plastic plug located in the rear side of the floor panel(**Figure 11**). Use a flat screw driver to remove the plastic plug. **NOTE:** This plastic plug is covered with tar and is very hard to find it. Push on the rear side of the oval shape hole until you feel a soft spot.
15. Remove a factory bolt located in the side panel by the front of the oval shape hole (**Figure 12**). **NOTE:** You will be replacing this bolt with the included 6mm bolt.
16. Insert one of the included "U" Bolts through oval shape hole and round hole (**Figure 13**). Partially hang rear Mounting Bracket to already inserted "U" Bolt using the included (2) 10mm Hex Nuts, (2) 10mm Lock Washers, and (2) 10mm Flat Washers (**Figure 14**).
17. Attach the front end of the Mounting Bracket to threaded hole in the side panel using the included (1) 6mm x 25mm Hex Bolt, (1) 6mm Lock Washer, and (1) 6mm Flat Washer (**Figure 15**).
18. Position driver Sidebar onto Mounting Brackets and attach it using the included (4) 8mm x 25mm Hex Head Bolts, (4) 8mm Lock Washers, and (4) 8mm Flat Washers (**Figure 16**).
19. Level and adjust Sidebar properly; and then tighten all hardware at this time.
20. Repeat steps 13-18 for passenger side.
21. Do periodic inspections to the installation to make sure that all hardware is secure and tight.

**To protect your investment**, wax this product after installing. Regular waxing is recommended to add a protective layer over the finish. Do not use any type of polish or wax that may contain abrasives that could damage the finish.

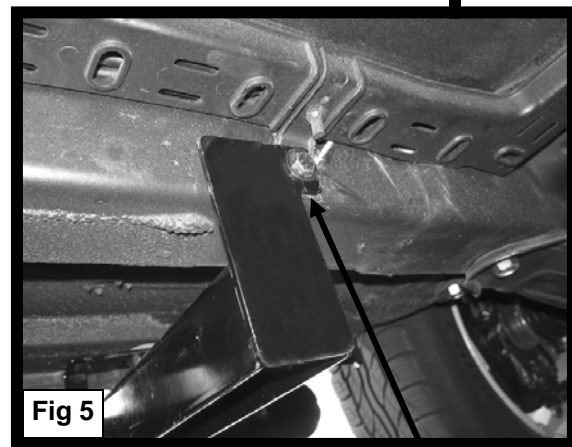
**For stainless steel:** Aluminum polish may be used to polish small scratches and scuffs on the finish. Mild soap may be used also to clean the Sidebar.

**For gloss black finishes:** Mild soap may be used to clean the Sidebar.

## Driver Side Front Mounting Bracket Installation Shown

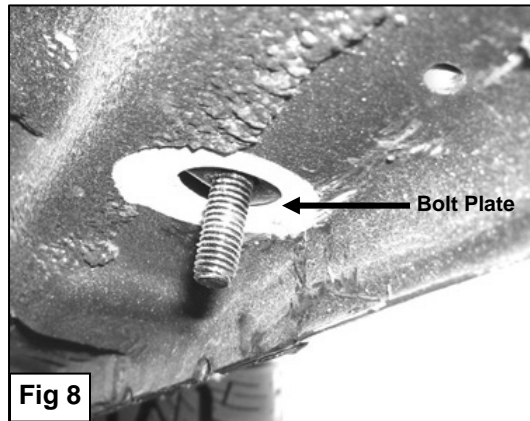
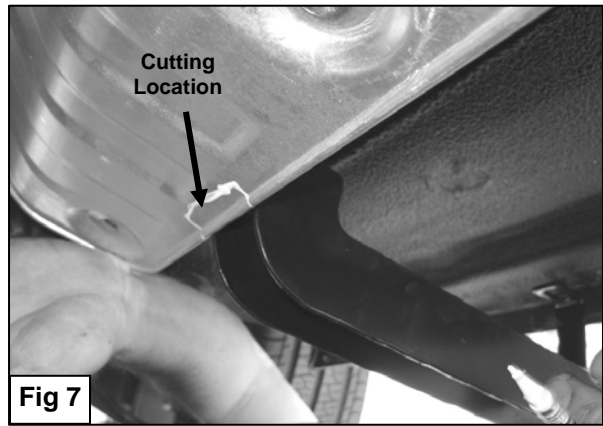
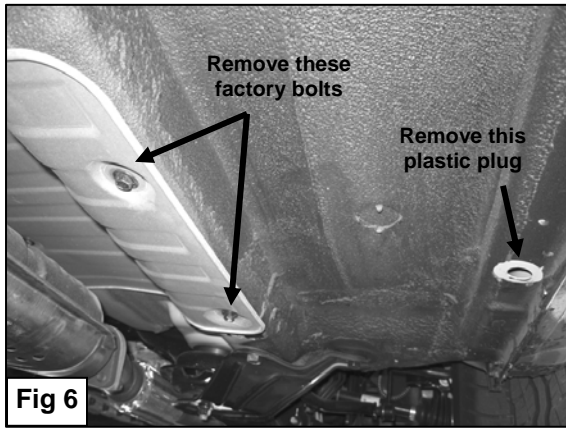


(Bolt Plate)  
8mm Hex Nut  
8mm Lock Washer  
8mm Flat Washer

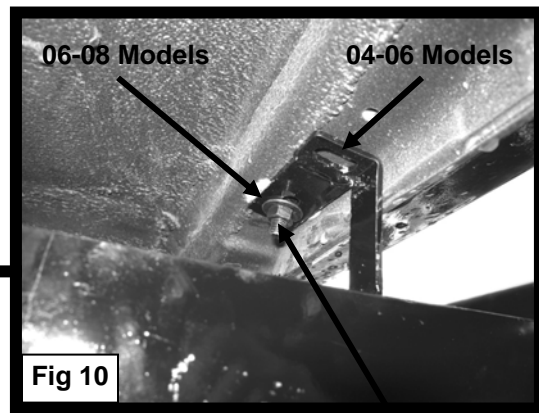


6mm x 25mm Hex Bolt  
6mm Lock Washer  
6mm Flat Washer

**Passenger Side Front Mounting Bracket Installation Shown**

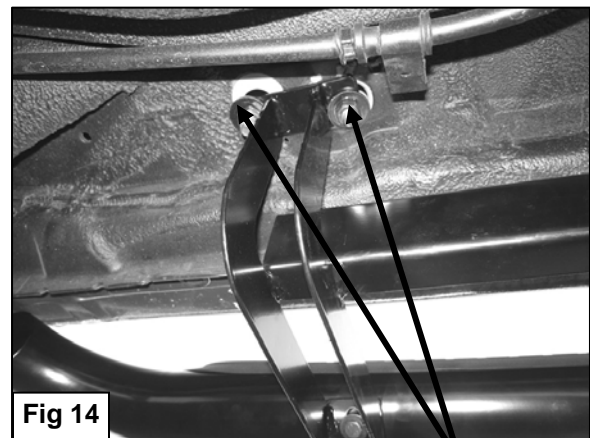
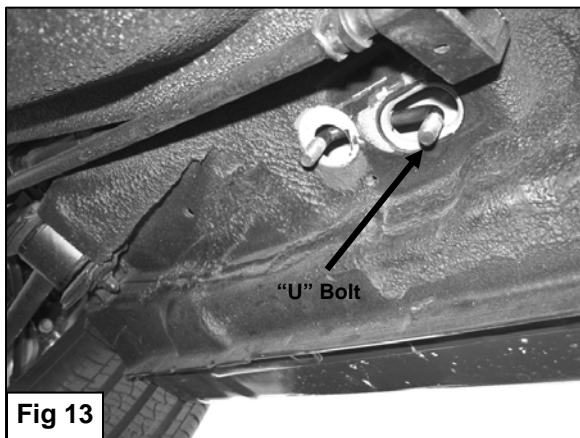
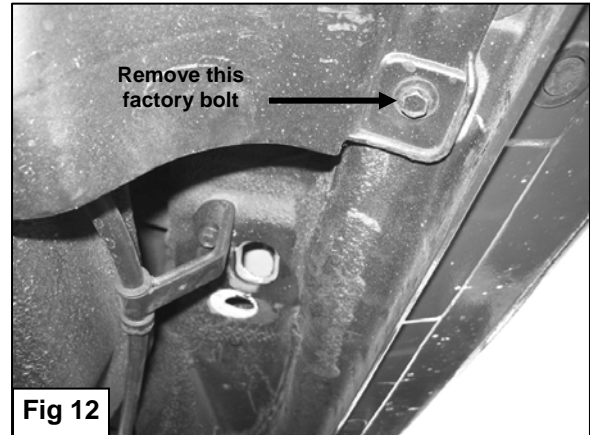
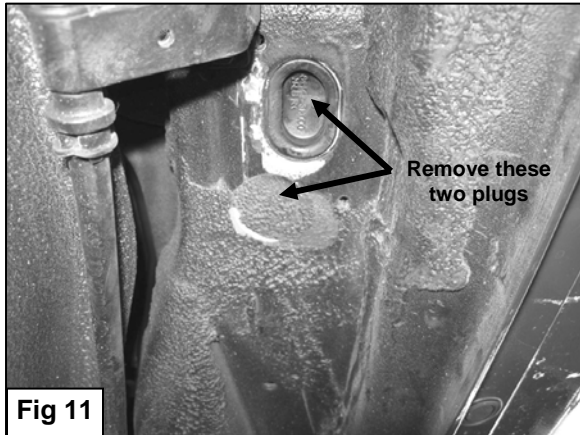


6mm x 25mm Hex Bolts  
6mm Lock Washers  
6mm Flat Washers

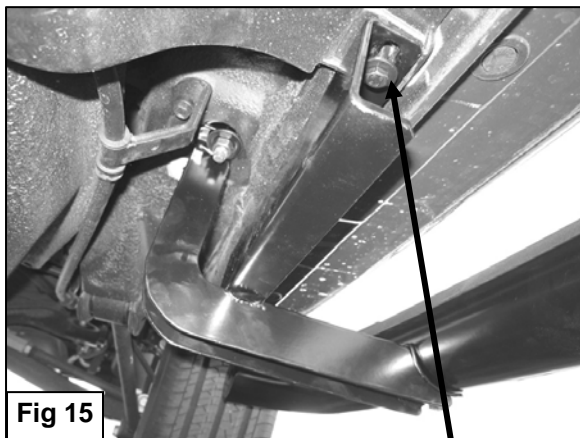


(Bolt Plate)  
8mm Hex Nut  
8mm Lock Washer  
8mm Flat Washer

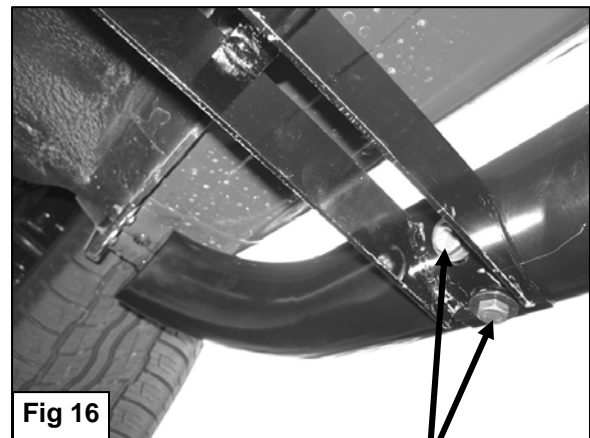
**Driver Side Rear Mounting Bracket Installation Shown**



("U" Bolt)  
10mm Hex Nuts  
10mm Lock Washers  
10mm Flat Washers



6mm x 25mm Hex Bolt  
6mm Lock Washer  
6mm Flat Washer



8mm x 25mm Hex Bolts  
8mm Lock Washers  
8mm Flat Washers