



INSTALLATION INSTRUCTIONS
2006-10 JEEP COMMANDER
PART # 201004 / 201004-2

PARTS LIST

<u>ITEM</u>	<u>DESCRIPTION</u>	<u>QUANTITY</u>
1.	STEP BAR ASSEMBLY, PASSENGER SIDE	1
2.	STEP BAR ASSEMBLY, DRIVER SIDE	1
3.	FRONT MOUNT BRACKET, PASSENGER	1
4.	FRONT MOUNT BRACKET, DRIVER	1
5.	REAR MOUNT BRACKET, PASSENGER	1
6.	REAR MOUNT BRACKET, DRIVER	1
7.	10MM T- BOLTS	4
8.	10MM X 35MM BOLTS (8.8)	16
9.	10MM NUTS	10

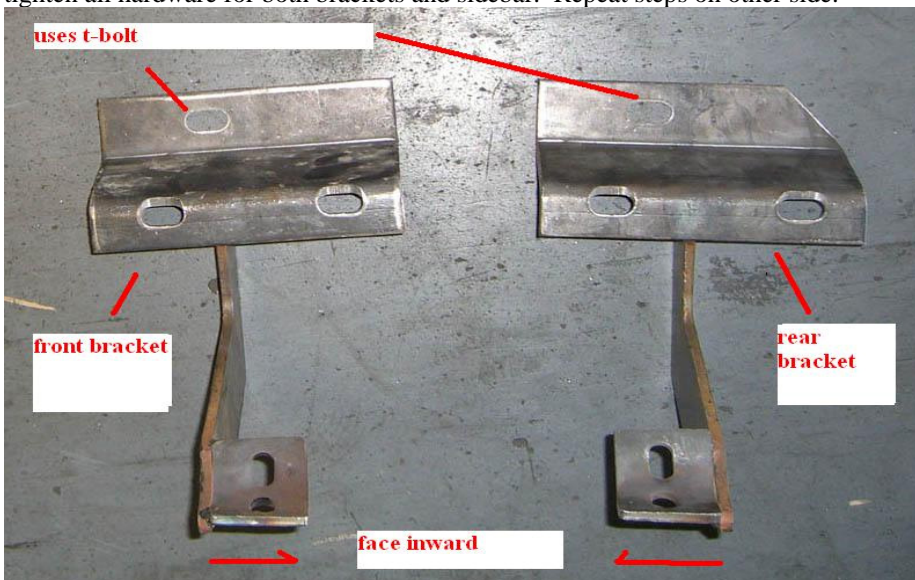
STEP 1 Remove the contents from the box and check for any damage. Verify all parts against the parts list.

STEP 2 Read and understand instructions completely before beginning installation.

STEP 3 Determine driver front and rear mount brackets. See figure 1. Locate mount holes on the rocker panel for front and rear brackets. Note the rear brackets have a slight angle cut off of them. Also, the cradles of both the front and back bracket should face inward towards each other.

STEP 4 The brackets align to both top and bottom section of rocker panel. Use the 10MM T-bolt for top hole of bracket and two 10MM bolts and nuts for the bottom. Leave all brackets semi loose for adjustment.

STEP 5 Attach the sidebar to the brackets using the 10MM bolts and washers. Leave semi loose until positioned level. Once in tact tighten all hardware for both brackets and sidebar. Repeat steps on other side.



FINISH PROTECTION- ARIES PRODUCTS HAVE A HIGH FINISH THAT MUST BE MAINTAINED SUCH AS ANY OTHER HIGH FINISH PRODUCT ON THE VEHICLE. PROTECT THE FINISH WITH A NON-ABRASIVE AUTOMOTIVE WAX. THE USE OF SOAP, POLISH, OR WAX THAT CONTAINS ABRASIVES IS DETRIMENTAL, AS THE COMPOUNDS SCRATCH THE FINISH AND OPEN IT TO CORROSION.

DISCLAIMER- BUYER ASSUMES ALL RISK AND LIABILITY WHATSOEVER FROM THE INSTALLATION AND USE OF ARIES PRODUCTS. ARIES PRODUCTS ARE SOLD AS DECORATIVE ACCESSORIES AND SHOULD NOT BE RELIED UPON AS PROTECTION FOR THE VEHICLE OR OCCUPANTS IN THE EVENT OF A COLLISION OR ROLL OVER. ARIES AUTOMOTIVE ASSUMES NO LIABILITY FOR INJURY, LOSS, INCIDENTAL OR CONSEQUENTIAL DAMAGES IN THE EVENT OF A COLLISION OR ROLLOVER.