

Parts List

1	Driver / left side bar
1	Passenger / right side bar
1	Driver / left front mounting bracket
1	Passenger / right front mounting bracket
1	Driver / left front support bracket
1	Passenger / right front support bracket
1	Driver / left rear mounting bracket
1	Passenger / right rear mounting bracket
5	Hex bolt, 8mm x 25mm
5	Flat washer, 8mm
5	Lock washer, 8mm
4	Hex bolt, 10 - 1.5mm x 35mm
4	Flat washer, 10mm x 30mm OD x 2.5mm
4	Lock washer, 10mm
4	Hex bolt, 12mm x 50mm
4	Bolt / nut plate, 12mm stud, 10mm nut
2	Bolt plate, 12mm x 40mm
4	Flat washer, 12mm x 38mm OD x 3mm
6	Flat washer, 12mm x 32mm OD x 3mm
10	Lock washer, 12mm
6	Hex nut, 12mm
1	Fishwire, 12mm
6	Plastic retainer, 11mm

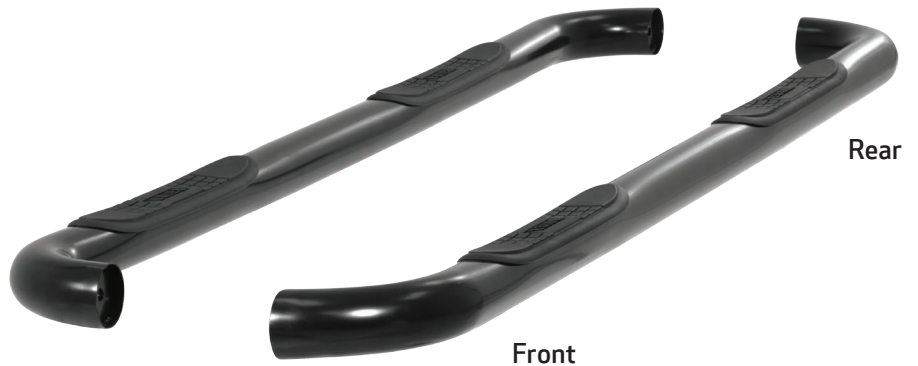
Level of Difficulty

Easy

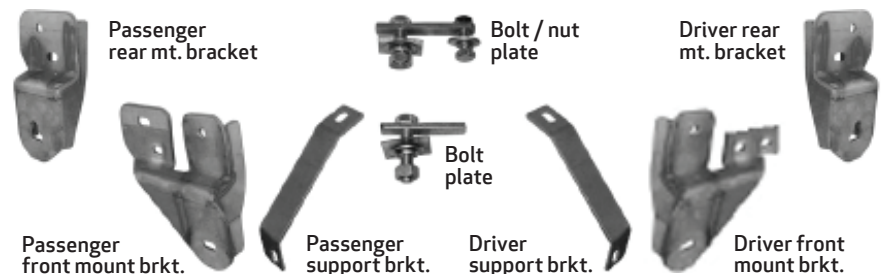


Scan for helpful install tips

Product Image



Brackets and Hardware



Notes and Maintenance

Before you begin installation, read all instructions thoroughly.

Proper tools will improve the quality of installation and reduce the time required.

To protect the product, wax after installing. Regular waxing is recommended to add a protective layer over the finish. Do not use any type of polish or wax that may contain abrasives that could damage the finish.

For gloss black finishes, mild soap may be used to clean the product.

Step 1

Begin your install by removing the factory-installed tape covering the mount locations on the passenger front rocker panel.

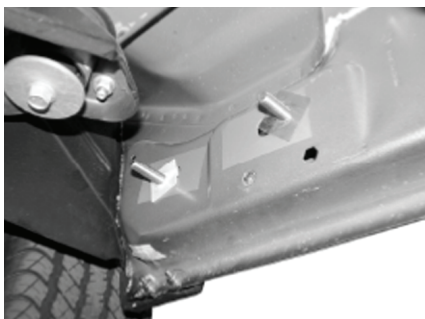
Note: Late model vehicles are supplied with factory-threaded inserts in the lower mounting locations and require a different installation process at select steps.

Step 2

If your vehicle is not equipped with lower threaded inserts: Begin the install by inserting the 12mm bolt plate in the front oval slot and securing it with a plastic retainer.

If your vehicle is equipped with lower threaded inserts: You will notice the front oval slot is smaller than the bolt plate. This will require the use of a fishwire.

Thread the fishwire onto the end of the 12mm stud and pull it into position from the larger slot location. Secure the stud with a plastic retainer.



Step 3

Install one of the larger 12mm bolt / 10mm nut plates in the second rocker panel slot. Secure with a second plastic retainer to prevent the stud from falling into the rocker panel.



Step 4

Place the passenger-side mounting bracket over the two 12mm studs and secure with a 12mm flat washer, lock washer and nut.

Snug the hardware, but do not fully tighten.

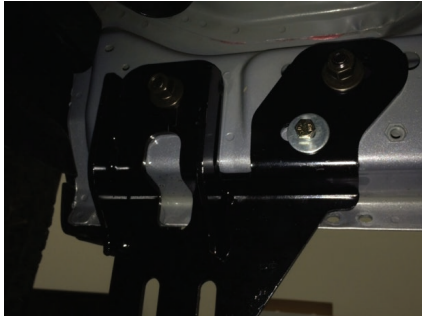


Step 5

If your vehicle is not equipped with lower threaded inserts: Rotate the 12mm bolt plate until the 10mm nut lines up with the bottom mounting hole. Secure the bottom of the bracket with a 10mm hex bolt, lock washer and flat washer.

Snug the hardware, but do not fully tighten.

If your vehicle is equipped with lower threaded inserts: Secure the bottom of the bracket with an 8mm hex bolt, lock washer and flat washer.



Step 6

On the rear passenger-side of the vehicle, remove the tape covering the oval factory slot in the inner body panel.

Thread a plastic retainer onto the threaded end of a 12mm bolt and nut plate. Insert the bolt and nut plate into the factory hole and snug the plastic retainer.



Step 7

Place the rear passenger-side mounting bracket over the 12mm stud and loosely secure with a 12mm nut, flat washer and lock washer.

If your vehicle is not equipped with lower threaded inserts: Rotate the 12mm stud until the 10mm nut lines up with the lower mount hole in the bracket and rocker panel. Secure the bottom of the bracket with a 10mm hex bolt, lock washer and flat washer.

If your vehicle is equipped with lower threaded inserts: Secure the base of the bracket with an 8mm hex bolt, lock washer and flat washer.

Snug the hardware, but do not fully tighten.



Step 8

With both the front and rear brackets attached to the rocker panel, remove the front passenger-side factory body bolt. Select the passenger-side front support bracket. Insert the factory body bolt through the support bracket and up into its original position.

Line the other end of the support bracket up with the oval slot in the front mounting bracket.



Step 9

Position the passenger side bar so the front threaded fastener on the end of the tube lines up with the mounting slot in the front bracket and support bracket.

Secure the side bar to the brackets with the provided 12mm x 50mm hex bolt, lock washer and flat washer.

Snug the hardware, but do not fully tighten.



Step 10

Position the rear of the side bar with the slot in the rear mounting bracket and secure it with a second 12mm x 50mm hex bolt, lock washer and flat washer. Level the side bar and fully tighten all of the mounting hardware to complete the installation on the passenger side.



Step 11

On the driver-side front location remove the factory tape covering the mounting slots in the rocker panel.

If your vehicle is not equipped with lower threaded inserts: Repeat steps 2 and 3 to install the 12mm bolt plates and secure them with the plastic retainers. Place the mounting bracket over the 12mm bolt plate and secure it with a 12mm hex nut, lock washer and flat washer.



Rotate the 12mm stud in the second location until the 10mm nut lines up with one of the slots in the bracket. Secure the bracket with a 10mm hex bolt, lock washer and flat washer. **Note:** The 12mm stud will not be used.

Step 12

If your vehicle is equipped with lower threaded inserts: Fishwire the 12mm bolt plate into position and secure with a plastic retainer.



Step 13

Place the driver-side front bracket over the 12mm stud and secure it with a 12mm flat washer, lock washer and nut.

Secure the bottom of the bracket with two 8mm hex bolts, lock washers and flat washers. A 12mm bolt / 10mm nut plate will not be required.

Snug the hardware, but do not fully tighten.



Step 14

Repeat steps 6 through 11 on the driver side of the vehicle.

Congratulations on the installation of your new ARIES 3" round side bars.

With the side bars installed, periodic inspections should be performed to ensure all mounting hardware remains tight.

To protect your investment, see the 'Notes and Maintenance' section on the first page of this instruction manual.