

Parts List

1	Driver / left running board
1	Passenger / right running board
2	Mounting bracket, front
2	Mounting bracket, rear
2	Support plate
4	T-bolt, 75mm tab
4	Carriage bolt, 8mm
2	U-bolt, 8mm
8	Flat washer, 8mm
8	Lock washer, 8mm
8	Hex nut, 8mm
2	Bolt retainer, plastic, 8mm
4	Flat washer, 12mm
4	Lock washer, 12mm
4	Hex nut, 12mm
4	Bolt retainer, plastic, 12mm

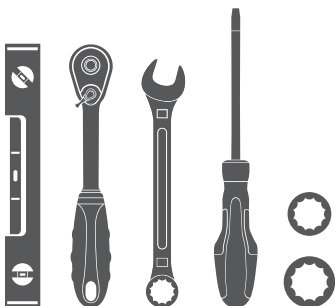
Additional Hardware*

12	Hex bolt, 8mm
12	Flat washer, 8mm
12	Lock washer, 8mm
12	Hex nut, 8mm

* Running boards are supplied with additional hardware. Quantities listed are in addition to the standard supplied hardware.

Tools Required

Ratchet	Socket, 13mm
Level	Socket, 16mm
Flathead screwdriver	Wrench, 13mm



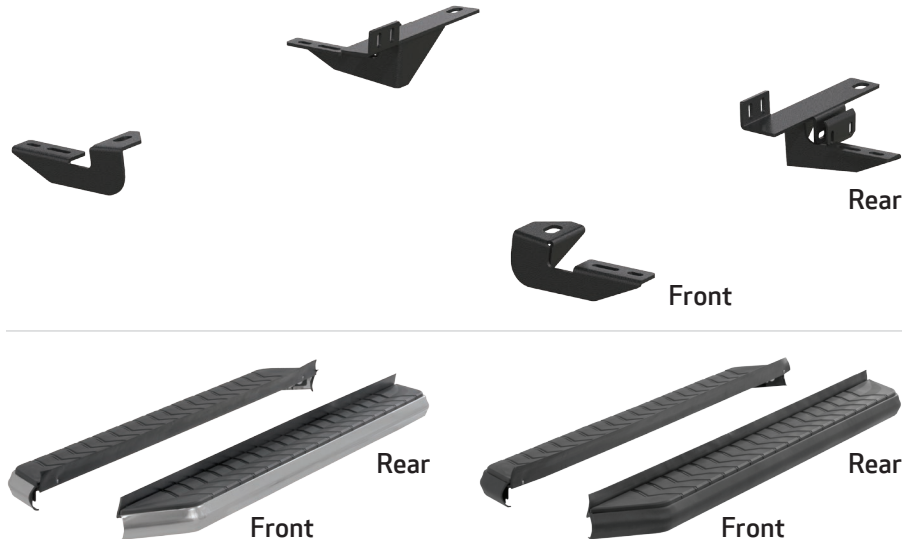
Level of Difficulty

Easy



Scan for helpful install tips

Product Image



Notes and Maintenance

Before you begin installation, read all instructions thoroughly.

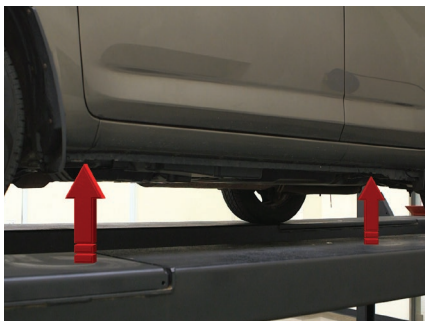
Proper tools will improve the quality of installation and reduce the time required.

For stainless steel, polish may be used to clear small scratches and scuffs on the finish. Mild soap may be used also to clean the product.

For black finishes, mild soap may be used to clean the product.

Step 1

Starting on the driver side, locate the two mounting locations underneath the vehicle. Locate the front bracket for the driver side.



Step 2

Remove the tape plugs to expose the mounting points. Insert a U-bolt into the side-by-side mounting holes. Slide an 8mm plastic bolt retainer over each end of the U-bolt to hold it in place.



Step 3

Locate the hole plug and remove it to clear the opening. Insert a 75mm T-bolt plate into the opening. Slide a 12mm plastic bolt retainer over the thread of the bolt to hold the bolt in place.



Step 4

Place the front driver-side bracket onto the vehicle and secure with a 12mm hex nut, 12mm lock washer and 12mm flat washer.

Finish securing the bracket with two 8mm hex nuts, two 8mm lock washers and two 8mm flat washers on the U-bolt.

Snug the hardware, but do not fully tighten.



Step 5

Place a slotted support plate on the outside of the vehicle body, aligning the slots of the connector with the holes on the mounting bracket.

Insert two carriage bolts with the square section of the bolt slotted in the connector.

Secure the connector using two 8mm hex nuts and two 8mm flat washers.



Step 6

Locate the hole plug on the rear driver side and remove it to clear the opening.

Insert a 75mm T-bolt plate into the opening. Slide a 12mm plastic bolt retainer over the thread of the bolt to hold the bolt in place.



Step 7

Place the rear driver-side bracket onto the vehicle and secure with a 12mm hex nut, 12mm lock washer and 12mm flat washer.

Snug the hardware, but do not fully tighten.



Step 8

Remove the 8mm nuts, 8mm lock washers and 8mm flat washers from the running board.

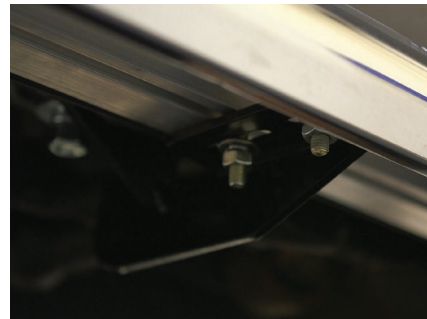
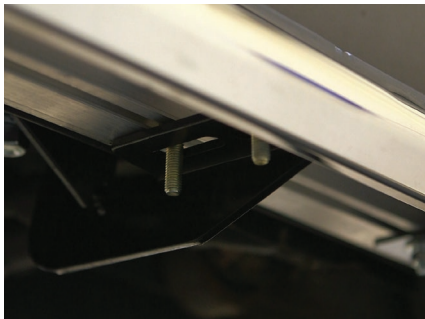
Place the running board onto the brackets and align the 8mm bolts with the slots in the brackets on the vehicle.



Step 9

Attach the running board to the brackets using six 8mm bolts, lock washers, flat washers and nuts.

Snug the hardware, but do not fully tighten.



Step 10

Adjust and level the running board, centering it between the front and rear wheel wells.

With the running board in position, it is recommended to tighten all brackets to the vehicle first, followed by the running board connections.



Step 11

Repeat steps 1 through 10 on the passenger side of the vehicle.

Congratulations on the installation of your brand new ARIES AeroTread™ running boards.

With the running boards installed, periodic inspections should be performed to ensure all mounting hardware remains tight.

To protect your investment, see the 'Notes and Maintenance' section on the first page of this instruction manual.

