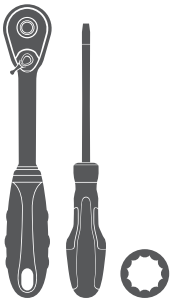


### Parts List

1	Driver / left, side bar / running board
1	Passenger / right, side bar / running board
6	Mounting bracket, universal
6	Serrated flange nut, 8mm
24	Hex bolt, 8mm
24	Flat washer, 8mm
24	Lock washer, 8mm
12	Hex nut, 8mm

### Tools Required

Ratchet	Socket, 13mm
Flathead screwdriver	



### Level of Difficulty

Easy



Scan for helpful install tips

### Product Image



### AdvantEDGE™



### RidgeStep™



### Notes and Maintenance

Before you begin installation, read all instructions thoroughly.

Proper tools will improve the quality of installation and reduce the time required.

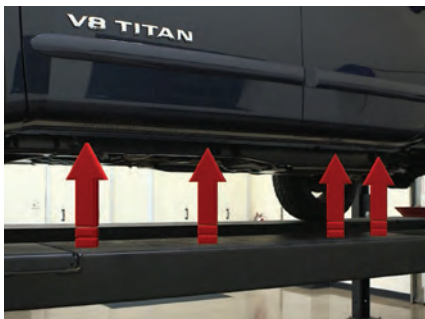
For chrome powder coat, polish may be used to clear small scratches and scuffs on the finish. Mild soap may be used also to clean the product.

For black finishes, mild soap may be used to clean the product.

### Step 1

Locate the four mounting tabs along the bottom edge of the vehicle body.

This installation will use the first, second and fourth mounting tabs.

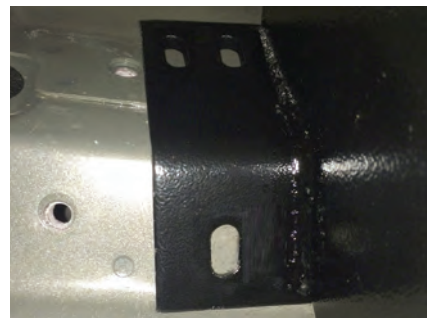


### Step 2

Starting at the front driver-side mounting location and using a flathead screwdriver, remove the plastic plugs to expose the threaded inserts on the rocker panel.

Old-style vehicles may have a combination of threaded inserts and threaded studs.

New-style vehicle will have two threaded inserts as shown.

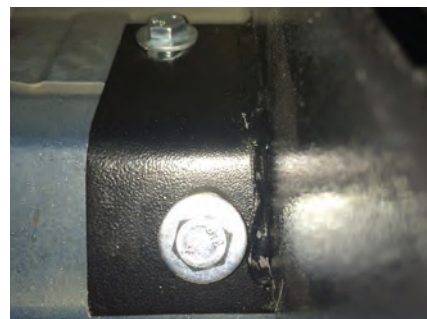


### Step 3

Secure the bracket to the vehicle using an 8mm serrated flange nut on the top mounting point and an 8mm hex bolt, lock washer and flat washer on the lower mounting point.

On newer vehicles with two threaded inserts, install the bracket with two 8mm hex bolts, two 8mm lock washers and two 8mm flat washers.

Snug the hardware, but do not fully tighten.



### Step 4

Repeat step 2 and 3 to install the middle and rear mounting brackets.

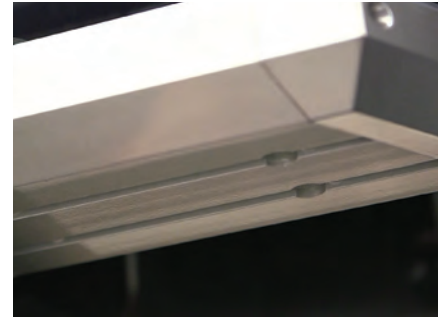


## If installing RidgeStep™ running boards, skip to Step 6A

### Step 5A - AdvantEDGE™ Side Bars

Carefully place the side bar onto the mounting brackets.

Ensure the outer edge of the side bar is lined up with the outer edge of the mounting brackets.

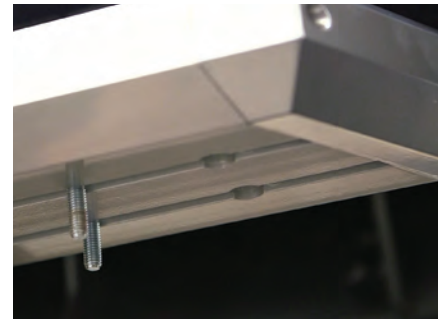
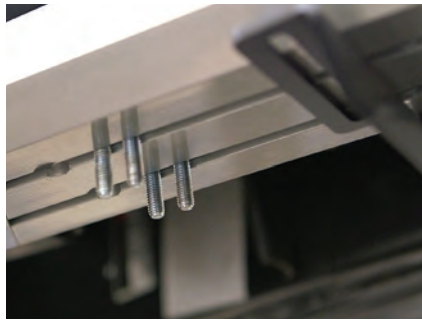


### Step 5B - AdvantEDGE™ Side Bars

Locate the round slots on the base of the side bar.

Insert two 8mm hex bolts into each slot, sliding them towards the front mounting bracket.

Insert an additional 8mm hex bolt into each rail slot by the back tire opening.



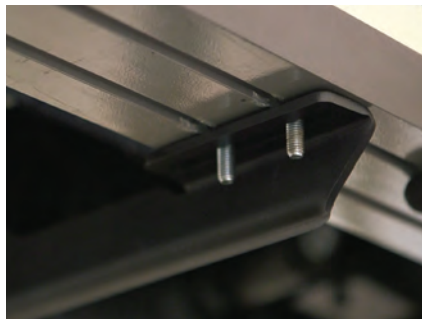
### Step 5C - AdvantEDGE™ Side Bars

Slide the bolts down the rail so that two bolts are positioned for each bracket.

Carefully lift the side bar up and move the bolts as necessary so they are in line with the slots on the mounting brackets.

Secure the side bar to the brackets using 8mm flat washers, 8mm lock washers and 8mm hex nuts. Snug the hardware, but do not fully tighten.

Skip to step 7.



### Step 6A - RidgeStep™ Running Boards

Slide the three C-shaped track mounting brackets into the rail slots.



### Step 6B - RidgeStep™ Running Boards

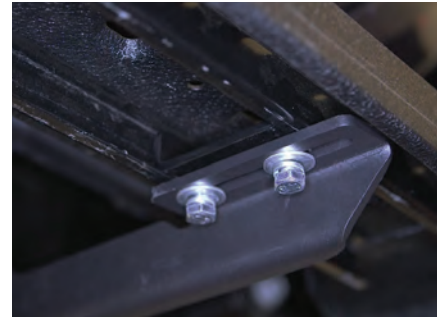
Carefully place the running board onto the mounting brackets.

Align the C-shaped track mounting brackets with the mounting brackets on the vehicle.



### Step 6C - RidgeStep™ Running Boards

Attach the C-shaped track mounting brackets to the mounting brackets using 8mm hex bolts, 8mm lock washers and 8mm flat washers.



### Step 7

At this time, adjust the side bars / running boards to the desired location.

With the side bars / running boards in position, it is recommended to tighten all brackets to the vehicle first, followed by the side bar / running board connections.



### Step 8

Repeat steps 1 through 7 on the passenger side of the vehicle.

Congratulations on the installation of your brand new ARIES AdvantEDGE™ side bars / RidgeStep™ running boards.

With the side bars / running boards installed, periodic inspections should be performed to ensure all mounting hardware remains tight.

To protect your investment, see the 'Notes and Maintenance' section on the first page of this instruction manual.

