



INSTALLATION INSTRUCTIONS

2007-09 ACURA MDX
PART # 206007 / 206007-2

PARTS LIST

- | | |
|-------------------------------|------------------------------|
| (2) SIDE TUBES WITH STEPS | (4) AUXILIARY MOUNT BRACKETS |
| (2) FRONT MOUNT BRACKETS | (2) M12 T-BOLTS |
| (2) REAR MOUNT BRACKETS | (2) M12 FLAT WASHERS |
| (2) M12 HEX NUTS | (2) M12 LOCK WASHERS |
| (12) M8 X 25MM HEX HEAD BOLTS | (28) M8 FLAT WASHERS |
| (24) M8 LOCK WASHERS | (12) M8*40 HEX HEAD BOLTS |
| (4) M8 HEX NUTS | |

PROCEDURE

1. Begin installation by working on driver side of the vehicle
2. From underneath vehicle, place drivers side front bracket in position as shown in Fig. 1 Attach using hex head bolts supplied with flat washers and lock washers and nuts. Secure the auxiliary mount bracket to the front bracket using the bolts, flat washer, lock washer and nuts as shown in below pictures . Do not fully tighten at this time
3. Attach and secure Rear Mount Bracket to underside of vehicles rear body mount in same manner as the front. Secure the auxiliary mount bracket to the front bracket using the bolts, flat washer, lock washer and nuts as shown in below pictures. Do not fully tighten at this time.
4. Attach side bar to brackets using the supplied head bolts, flat washers and lock washers.
5. Repeat steps 1-4 on Passenger side. Align side bar with vehicle and fully tighten all nuts and bolts.

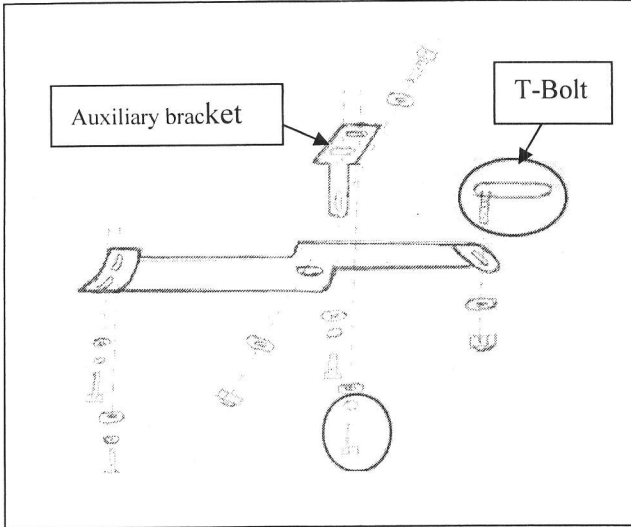


Fig. #1

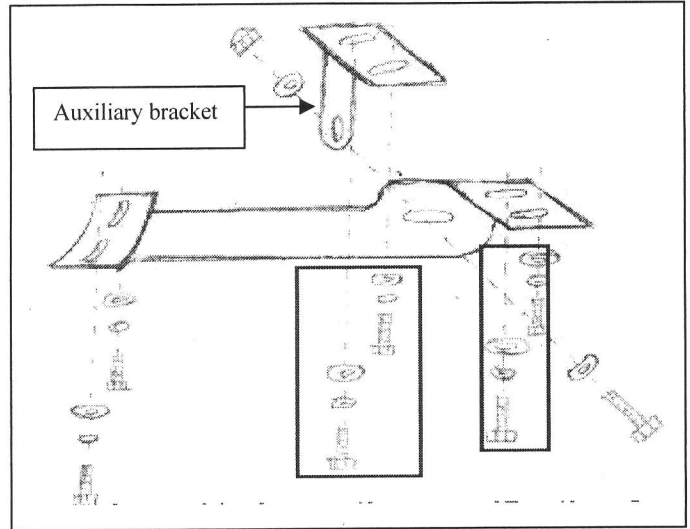


Fig. #2

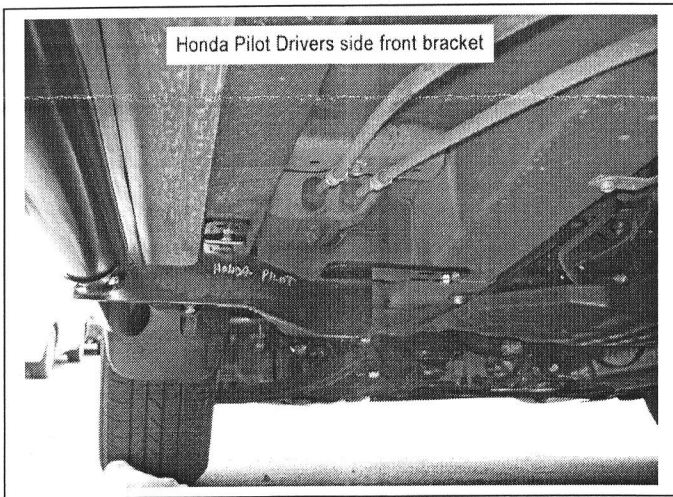


Fig. #3

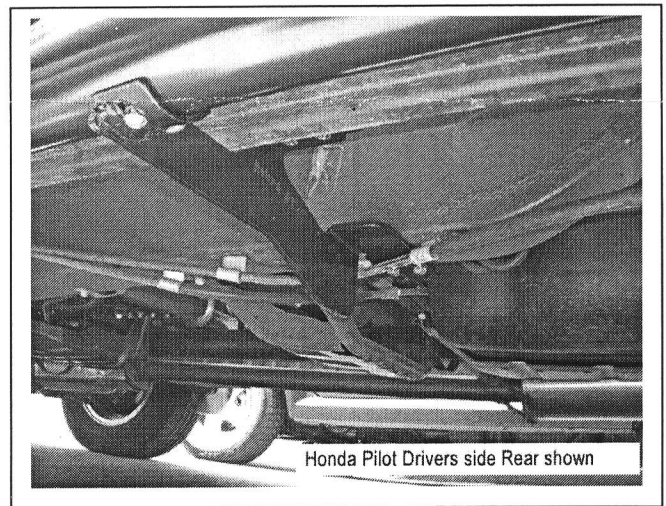


Fig. #4

(The above images are only for reference. Maybe the actual brackets are different.)