



Installation Instructions

Side Bar Part # 234009-2

**99-08 SILVERADO/GMC SIERRA 1500/2500LD EXT. CAB;
01-08 SILVERADO/GMC SIERRA 2500HD/3500 EXT. CAB**

QTY	DESCRIPTION
1	Side Bar, left side
1	Side Bar, right side
1	Hardware Kit

NOTE: Please read this information before installing. Check components received with components listed above.
NO DRILLING REQUIRED for installation of these side bars. To obtain correct installation, we recommend you to follow these step by step installation instructions carefully. Please take care when installing this product to protect the finish and your investment.

Step One: Locate hardware kit. Check contents with the hardware listed below.

QTY	DESCRIPTION
2	Front Mounting Bracket-small
2	Rear Mounting Bracket-large
2	Support Bracket
4	12mm*50mm Hex Bolt-zinc plated
2	12mm x 30mm Hex Bolt-zinc plated
2	12mm Hex Nut-zinc plated
6	12mm Lockwasher-zinc plated
8	12mm Flat washer-zinc plated
2	10mm x 30mm Hex Bolt-zinc plated
2	10mm Hex Nut-zinc plated
4	10mm Flat washer-zinc plated
2	10mm Lock washer-zinc plated
4	3" Plastic Rings

Step Two: Remove the four body mount bolts.

Step Three: Attach the front and rear mounting brackets to the body mounts with the existing body mount bolts and hand tighten. (Figure 1 & 2)

Step Four: Place the side bars into position. (NOTE: To determine which side bar is the left or right, check the number on the welded insert at the end of the tube.)

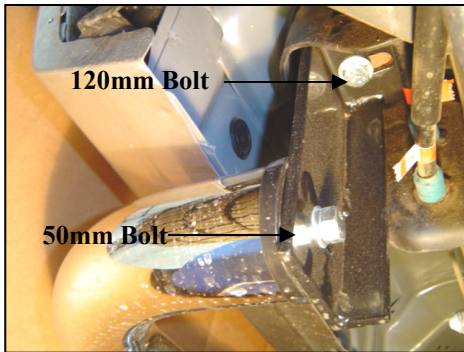
Step Five: Attach the side bars to the mounting brackets with the 12mm hardware and 3" plastic rings provided.

Step Six: Bolt the straps to the rear brackets and to the existing hole in the rear body mounts with the 10mm hardware supplied and hand tighten.

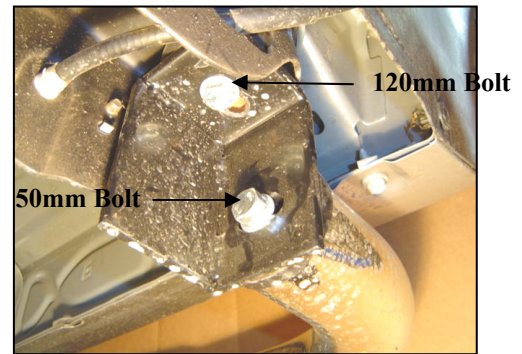
Step Seven: After checking to make sure the side bars are level and square with the side of the vehicle completely tighten all hardware.

Step Eight: Periodically check and retighten the hardware as necessary.

Rear Bracket



Front Bracket



(The images are only for reference. Maybe the actual brackets are different. The installation is same.)

Cleaning Instructions

Black Powder Coat finish: Mild soap, window or glass cleaner may be used. Do not use any type of polish or wax that contains abrasives that could damage the finish.

Stainless Steel finish: Mild soap, window or glass cleaner may be used.