

INSTALLATION INSTRUCTIONS

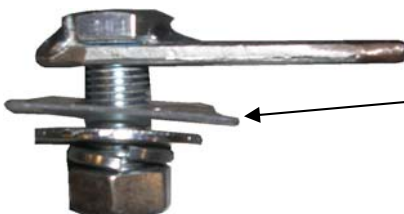
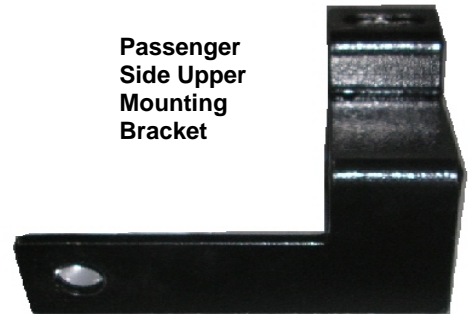
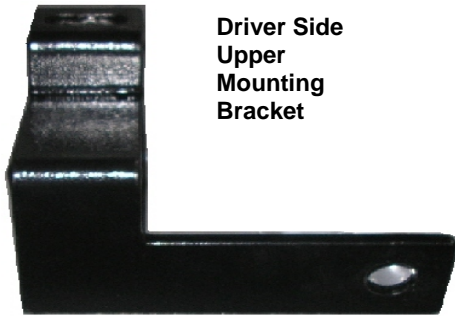
2701/2701-2

04-2008 MINI COOPER CONVERTIBLE

02-06 MINI COOPER & S MODEL

PARTS LIST:

Qty	Description	Qty	Description
1	Sport Bar	2	10mm Nuts
1	Driver/Left Upper Mount Bracket	2	10mm x 30mm Bolts
1	Passenger/Right Upper Mount Bracket	4	10mm Flat Washers
1	Driver/Left Lower Mounting Bracket	2	10mm Lock Washers
1	Passenger/Lower Mounting Bracket	2	8mm Lock Washers
2	Plastic Retainers	2	8mm x 30mm Bolts
2	12mm x 35mm Bolt Plates	2	8mm Flat Washers
2	12mm Nuts	4	6mm x 15mm Hex Cap Screws
2	12mm Flat Washer	4	6mm Flat Washers
2	12mm Lock Washers	4	6mm Lock Washers
1	License Plate Relocation Bracket	4	6mm Nuts



12mm x 35mm Bolt Plate
(pictured with Plastic Retainer installed for example)

PROCEDURE:

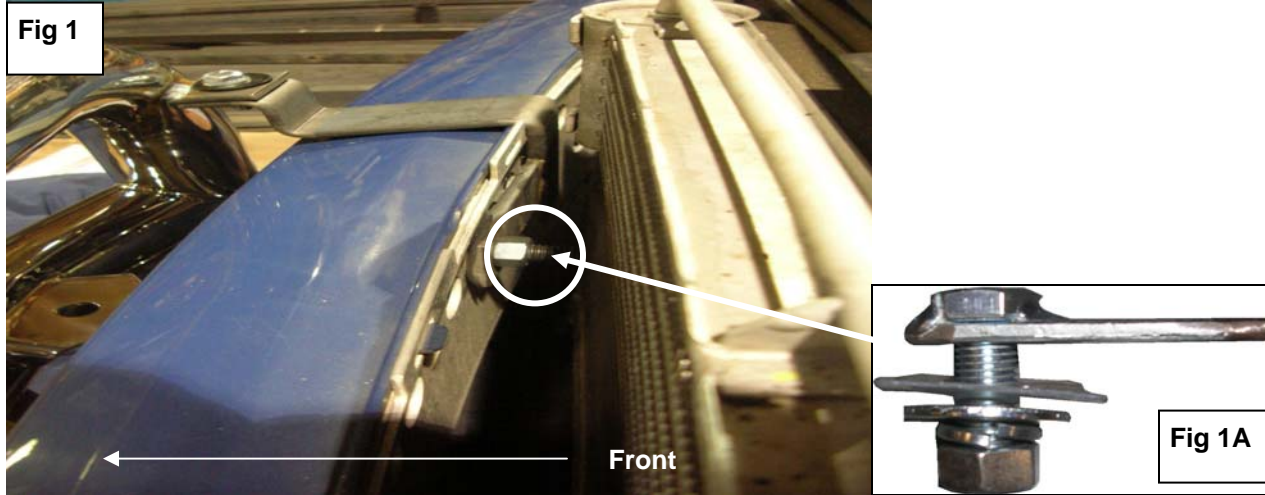
- 1. REMOVE CONTENTS FROM BOX. VERIFY ALL PARTS ARE PRESENT. READ INSTRUCTIONS CAREFULLY BEFORE STARTING INSTALLATION.**
2. Start the procedure by opening the Hood of the Vehicle.
3. Your License plate will need to be relocated, please remove the license plate and the plastic holder; your license will be reinstalled to the Sport bar by using the supplied license plate relocation bracket. Begin by securely mounting bracket to the Sport bar with (2) 6mm bolts, (2) 6mm flat washers, and (2) lock washer, once secure you can attach your license plate to the new license bracket, using the (2) 6mm bolts, (2) 6mm flat washers, (2) 6mm lock washers.
4. Refer to the parts list Diagram above, Select the Upper Mounting Brackets, Bolt Tabs & Hardware
5. Next, partially thread the Plastic Retainer onto the threaded end of the Bolt Plate, **(Figure 1A)**
6. Once you have assembled the Plastic Retainer onto the Bolt Plates, insert each Bolt Plate into the factory round hole located in between the bumper and the radiator, along the back side of the bumper, there are several round holes (the holes used to attach Upper Mounting brackets are the 5th from center on both sides), Once the Bolt Plate is inserted, hold the Bolt end with one hand and tighten the Plastic Retainer with your other hand. **NOTE:** Tighten the Plastic Retainer until it reaches the side panel, **(Figure 1 shows the Upper Mounting bracket attached).**
7. Select the passenger side Upper Mounting Bracket. Position the Mounting Bracket onto the installed Bolt Plates. Secure it with (1) 12mm Flat Washer, (1) 12mm Lock Washers and (1) 12mm Hex Nuts, **(Figure 1)**. Snug but do not tighten hardware at this time. Repeat for Drivers side. **(Figure 2)** Shows Upper mounting brackets attached.
8. You can now attach the Sport bar to the Upper Mounting Brackets with the (2)10mm bolts, (4) 10mm flat washers, (2) 10mm Lock washers and 2 10mm nuts. Snug but do not tighten hardware at this time.
9. Next, proceed to install the lower Mounting brackets, **(Figure 3)**. place the brackets up to the Sport bar and attach to Sport bar with the (2) 8mm Bolts, (2) 8mm Flat washers and (2) 8mm lock washer, from where the brackets line up to the plastic skid shield there are 2 factory bolts securing bumper to skid shield, remove these bolts place the brackets up to the underside of the skid shield followed by the factory bolts. Snug but do not tighten hardware.
10. Level and align Sport Bar properly; then tighten all hardware at this time.
11. Do periodic inspections to the installation to make sure all hardware is secure and tight.

To protect your investment, wax this product after installing. Regular waxing is recommended to add a protective layer over the finish. Do not use any type of polish or wax that may contain abrasives that could damage the finish.

For stainless steel: Aluminum polish may be used to polish small scratches and scuffs on the finish. Mild soap may be used also to clean the Sidebar.

For gloss black finishes: Mild soap may be used to clean the Sidebar.

Upper Mounting Bracket Installation pictured Passenger side.



Upper Mounting Bracket Installation pictured



Fig 3