



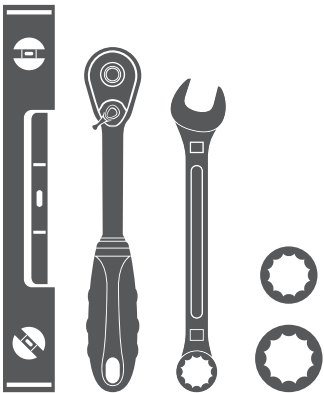
# 364049-2 INSTALLATION MANUAL

## Parts List

1	Driver / left side bar
1	Passenger / right side bar
4	Bracket, front
2	Bracket, back
12	Clip-on nut, 8mm
12	Hex bolt, 8mm x 25mm
12	Flat washer, 8mm
12	Lock washer, 8mm
12	Hex bolt, 10mm x 25mm
14	Flat washer, 10mm
14	Lock washer, 10mm
2	Bolt plate, 10mm
2	Hex nut, 10mm

## Tools Required

Ratchet	Level
Socket, 13mm	Wrench, 16mm
Socket, 16mm	



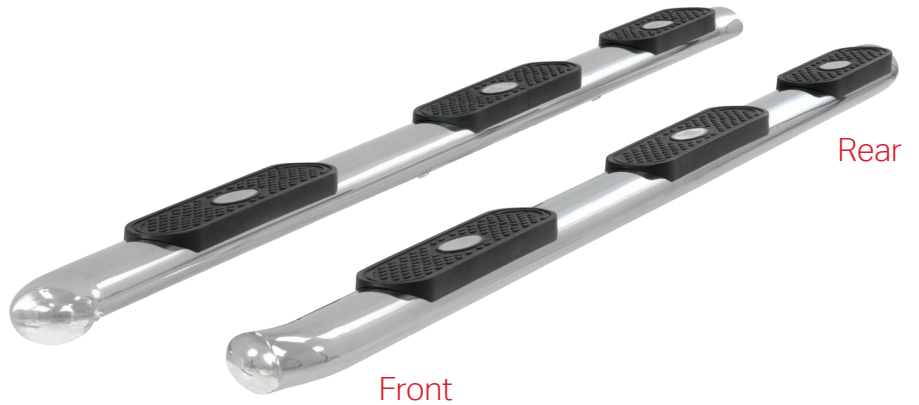
## Level of Difficulty

Easy

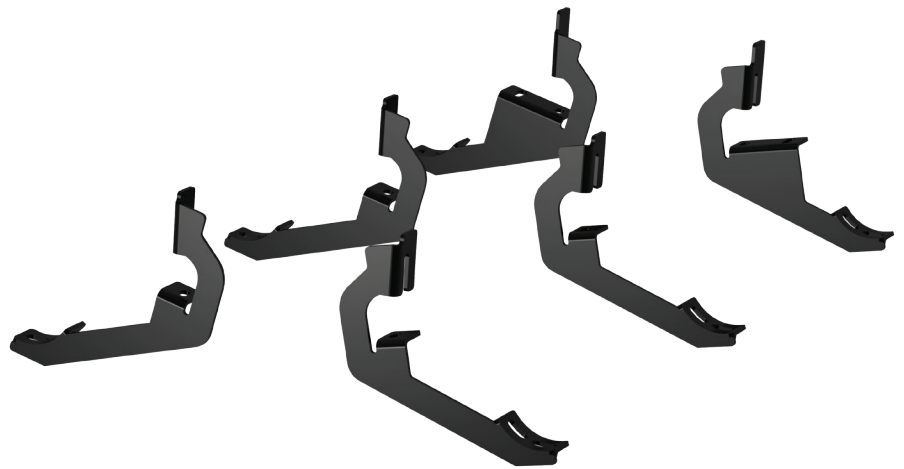


Scan for helpful install tips

## Product Image



## Brackets



## Notes and Maintenance

Before you begin installation, read all instructions thoroughly.

Proper tools will improve the quality of installation and reduce the time required.

To protect the product, wax after installing. Regular waxing is recommended to add a protective layer over the finish. Do not use any type of polish or wax that may contain abrasives that could damage the finish.

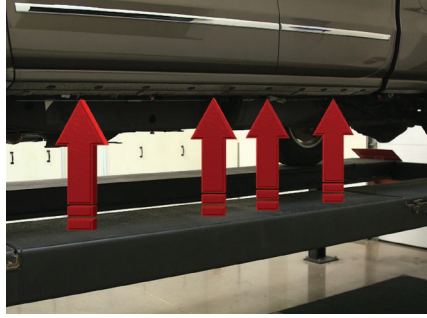
For stainless steel and aluminum, polish may be used to clear small scratches and scuffs on the finish. Mild soap may be used also to clean the product.

### Step 1

Locate the four mounting tabs along the bottom edge of the vehicle body.

This installation will use the first, second, and fourth mounting tabs.

Make sure to use the two rear brackets in the rear position only.



### Step 2

Starting at the front driver side mount location, locate the hole plug and remove it. Install two clip nuts.



### Step 3

Secure the bracket with two 8mm hex bolts, two lock washers and two flat washers. Snug the hardware, but do not fully tighten.



### Step 4

Repeat step 3 to install the second bracket over the second mounting tab location from step 1.



### Step 5

Locate the fourth tab location from step 1 and remove the upper and lower rubber plug from the access hole.

Insert a clip nut through the access hole and align it over the adjacent small hole.



### Step 6

Slide a second clip nut over the lower mount location and insert the 10mm bolt plate into lower access hole.

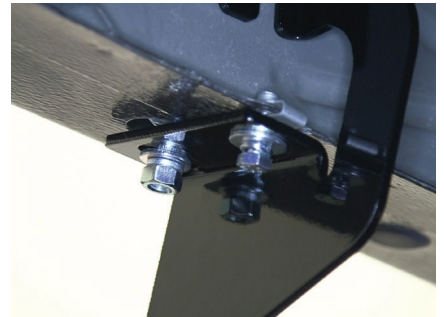
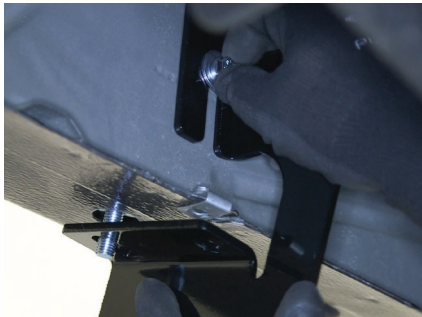


### Step 7

Secure the top and bottom of the bracket with an 8mm hex bolt, lock washer and flat washer.

Secure the bolt plate to bracket with a 10mm flat washer, 10mm lock washer and 10mm hex nut.

Snug the hardware, but do not fully tighten.



### Step 8

Carefully position the side bar onto the mounting brackets.

Ensure all the mount locations on the bottom of the side bar line up with the mounting brackets.

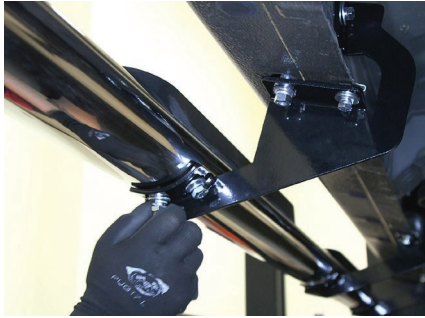
Note: If the holes on the side bar do not match up with the brackets, ensure all the brackets have been installed in the correct locations.



### Step 9

Attach the side bar to the brackets with six of the 10mm hex bolts, locking washers and flat washers.

Snug the hardware, but do not fully tighten.



### Step 10

With all the hardware installed we recommend tightening all of the vehicle connections first, followed by the side bar connections.

Check for level and adjust if necessary.

Once aligned, tighten all hardware.

Repeat this entire process on the passenger side.



### Step 11

Remember to do periodic inspections to make sure that all hardware is secure and tight.

To protect your investment, we recommend you apply a layer of nonabrasive wax.

Congratulations on the installation of your brand new Aries 4" wheel-to-wheel oval side bars.

