

### Parts List

1	Driver / left side bar
1	Passenger / right side bar
5	Mounting bracket, universal
1	Mounting bracket, front driver-side
6	Bolt plate with nut
24	Flat washer, M6
24	Nylock nut, M6
7	Hex bolt, M8
7	Flat washer, M8
7	Lock washer, M8
6	Hex bolt, M10
6	Flat washer, M10
6	Lock washer, M10
6	Flat washer, M12
6	Lock washer, M12
6	Hex nut, M12
6	Bolt plate, stainless steel
6	Plastic bolt retainer
1	Spacer plate

### Additional Hardware\*

24	T-bolt, M8 x 1.25 - 25mm, CL8.8
24	Flat washer, M8
24	Lock washer, M8
24	Hex nut, M8 x 1, CL8.8

\* Aluminum bars are supplied with additional hardware. Quantities listed are in addition to the standard supplied hardware.

### Tools Required

Ratchet	Socket, 16mm
Socket, 10mm	Socket, 18mm
Socket, 13mm	Level
Socket, 14mm	Utility knife

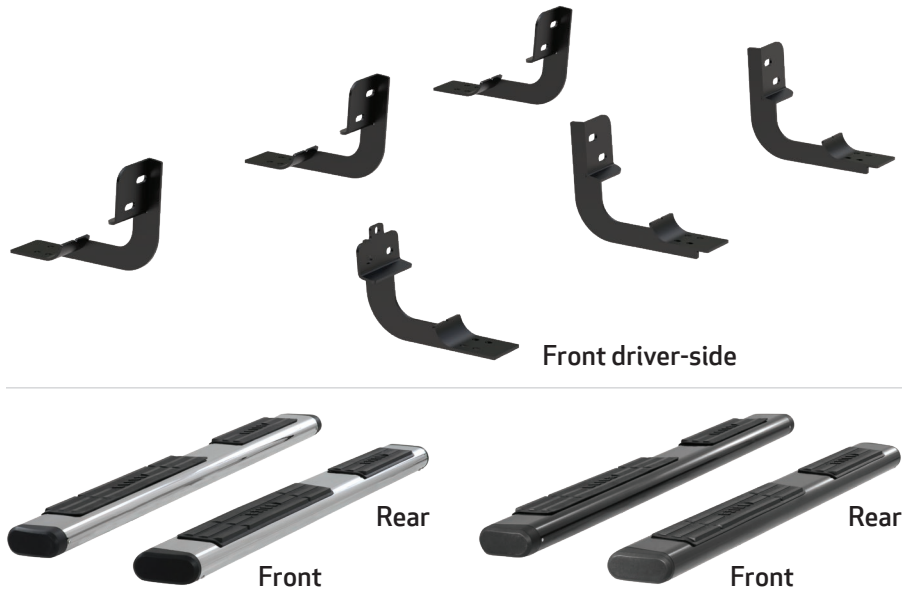
### Level of Difficulty

Easy



Scan for helpful install tips

### Product Image



### Notes and Maintenance

Before you begin installation, read all instructions thoroughly.

Proper tools will improve the quality of installation and reduce the time required.

To protect the product, wax after installing. Regular waxing is recommended to add a protective layer over the finish. Do not use any type of polish or wax that may contain abrasives that could damage the finish.

For stainless steel and aluminum, polish may be used to clear small scratches and scuffs on the finish. Mild soap may be used also to clean the product.

Refer to the table below when securing hardware during the installation process to help prevent damage to the product or vehicle.

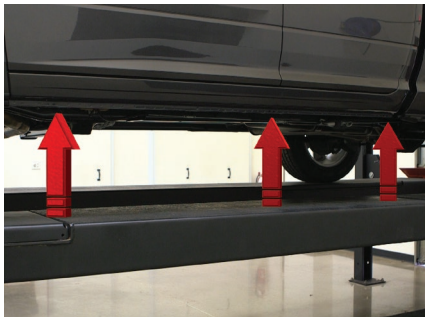
### Torque Specifications

METRIC		SAE	
M6 bolt	3 ft.-lbs.	1/4" bolt	3 ft.-lbs.
M8 bolt	7 ft.-lbs.	5/16" bolt	7 ft.-lbs.
M10 bolt	16 ft.-lbs.	3/8" bolt	16 ft.-lbs.
M12 bolt	28 ft.-lbs.	7/16" bolt	20 ft.-lbs.
--	--	1/2" bolt	28 ft.-lbs.

Use above torque setting unless otherwise noted

## Step 1

Starting on the driver side, locate the three mounting tabs along the bottom edge of the vehicle body.



## Step 2

Locate the front mounting point.

Using a utility knife, cut and remove the tape plug covering the third mounting point for the front mounting bracket.

**Note:** Older model vehicles may not have a support bracket (indicated by the red arrow) at this location. In this case, use the provided spacer plate between the front mounting bracket and the rocker panel.



## Step 3

Insert an M12 bolt plate into the opening. Slide a plastic bolt retainer over the thread of the bolt to hold the bolt in place.

Place the front driver-side bracket onto the vehicle and secure the top portion with an M12 flat washer, M12 lock washer and M12 hex nut.

Snug the hardware, but do not fully tighten.



## Step 4

Finish securing the front mounting bracket by inserting two M8 flat washers, M8 lock washers and M8 hex bolts into the bottom holes of the mounting bracket.

Snug the hardware, but do not fully tighten.

**Note:** On vehicles not equipped with M8 threaded inserts, align the M10 nut on the M12 bolt plate with the hole location on the bracket. Secure using an M10 hex bolt, M10 lock washer and M10 flat washer.



### Step 5

Locate the middle mounting point on the vehicle and a universal mounting bracket.

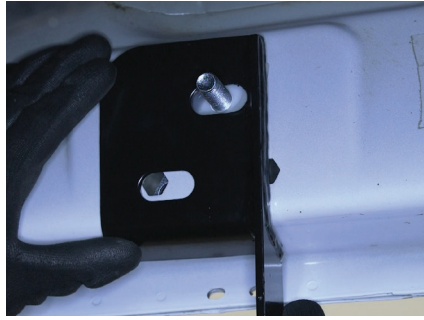
Insert an M12 bolt plate into the top opening. Slide a plastic bolt retainer over the thread of the bolt to hold the bolt in place.

Place the mounting bracket onto the vehicle and secure the top portion with an M12 flat washer, M12 lock washer and M12 hex nut.

Finish securing the middle mounting bracket by inserting an M8 flat washer, M8 lock washer and M8 hex bolt into the bottom hole of the mounting bracket.

Snug the hardware, but do not fully tighten.

**Note:** On vehicles not equipped with M8 threaded insert, align the M10 nut on the M12 bolt plate with the hole location on the bracket. Secure using an M10 hex bolt, M10 lock washer and M10 flat washer.



### Step 6

Locate the rear mounting point and repeat step 5 to complete the bracket installation on the driver-side of the vehicle.

Repeat step 5 to install the front, middle and rear passenger-side mounting brackets.



### Step 7

Carefully place the side bar onto the brackets with the larger step pad towards the front of the vehicle.



### Step 8A - For Polished Stainless Steel Side Bars

Insert a bolt plate into the bottom channels of the side bar as shown.

Slide the bolt plate forward to the front bracket and insert the studs through the bracket cradle. Repeat this for the middle and rear brackets.

Secure the side bar to the brackets using 12 M6 flat washers and hex nuts.

Snug the hardware, but do not fully tighten.



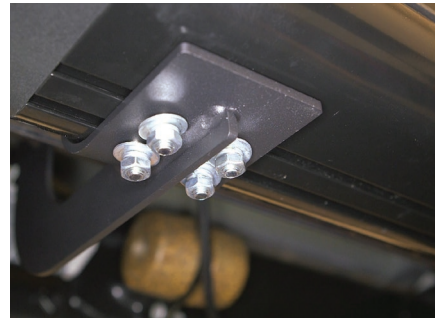
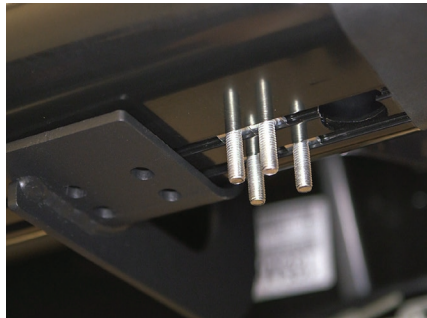
### Step 8B - For Semi-Gloss Black, Aluminum Side Bars

Insert four T-bolts into the bottom channels of the side bar as shown.

Slide the bolts forward to the front bracket and insert them through the bracket cradle. Repeat this for the middle and rear brackets.

Secure the side bar to the brackets using 12 M8 flat washers, lock washers and hex nuts.

Snug the hardware, but do not fully tighten.



### Step 9

Adjust and level the side bar, centering it between the front and rear wheel wells.

With the side bar in position, it is recommended to tighten all brackets to the vehicle first, followed by the side bar connections.



### Step 10

Repeat steps 7 through 9 on the passenger side of the vehicle.

Congratulations on the installation of your new ARIES 6" oval side bars.

With the side bars installed, periodic inspections should be performed to ensure all mounting hardware remains tight.

To protect your investment, see the 'Notes and Maintenance' section on the first page of this instruction manual.

