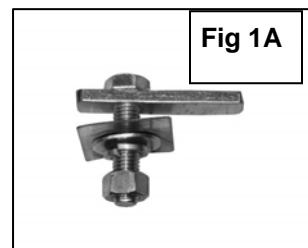
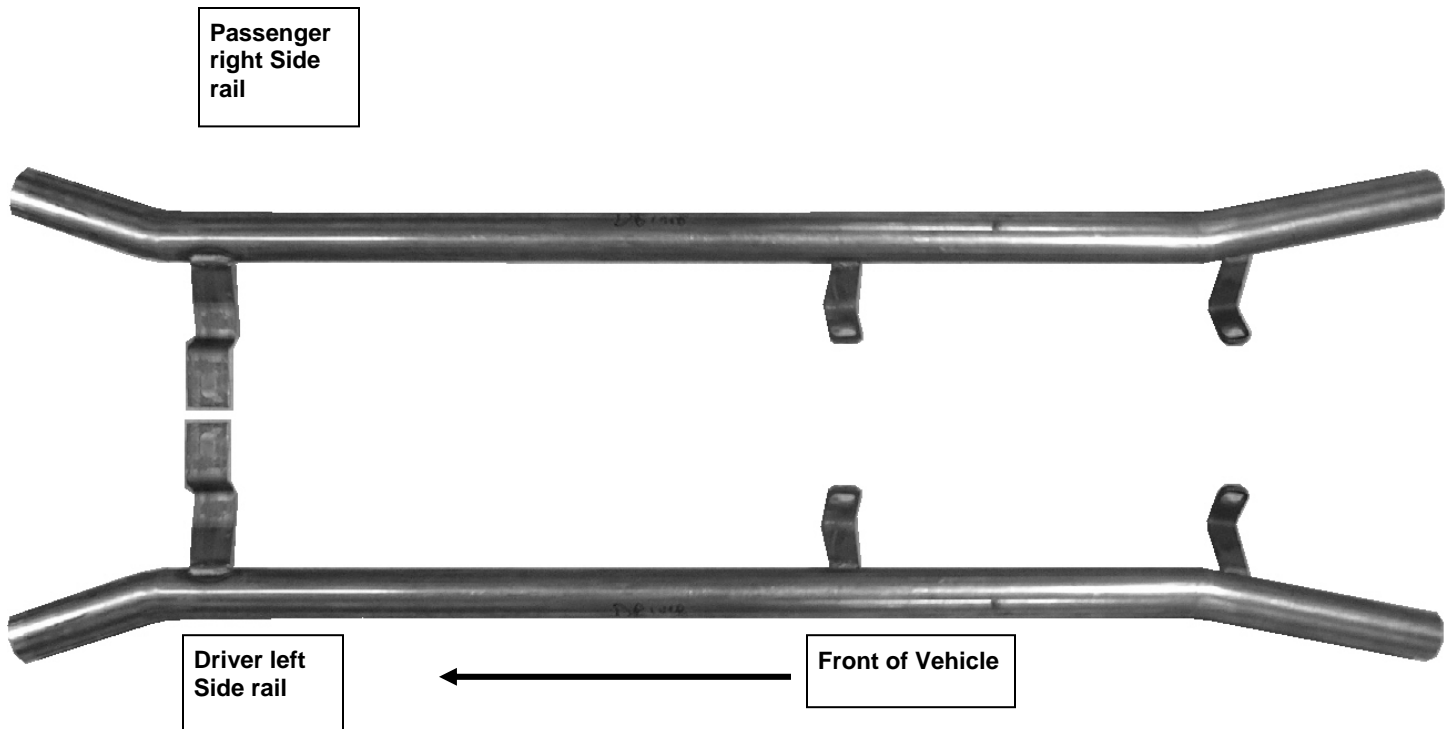


INSTALLATION INSTRUCTIONS

502504/502504-2
08-2010 SMART CAR

PARTS LIST:

Qty	Description	Qty	Description
1	Driver/Left Side Rail	2	10mm Lock Washer
1	Passenger/Right Side Rail	2	10mm Nuts
2	10mm x 30mm Bolt Plate	2	Plastic Retainer
2	10mm Flat Washer		



10mm x 30mm Bolt Plate
(pictured with Plastic Retainer installed for example)

PROCEDURE:

- 1. REMOVE CONTENTS FROM BOX. VERIFY ALL PARTS ARE PRESENT. READ INSTRUCTIONS CAREFULLY BEFORE STARTING INSTALLATION.**
- Starting with Driver left side front, partially thread a Plastic Retainer onto the threaded end of a Bolt Plate, **(Fig 1A)**
- Insert the Bolt Plate into the factory hole, located just under vehicles floor board behind front tire, **(Fig 2, shows front bracket location with side rail attached)**, once the Bolt Plate is inserted, hold the Bolt end with one hand and tighten the Plastic Retainer with your other hand. **NOTE:** Tighten the Plastic Retainer until it reaches the floor panel.
- Located along the under side rocker panel to the rear of the front bracket, are 2 Hex head bolts, attaching the (factory) plastic skid shield to the side of rocker panel, remove these bolts. **(Fig 3 & Fig 3A shows location of Hex head bolts with the side rail attached).**
- With bolts removed, begin to install Driver left side rail by attaching it to front bolt plate, with the (1) 10mm Flat Washer (1) 10mm Lock Washer and (1) 10mm Nut, **(Fig 4)** Snug but do not tighten hardware at this time, re-attach the two factory bolts through side rails middle and rear brackets back into factory clips on rocker panel, **(Fig 5 & 5A)** Snug but do not tighten hardware at this time.
- Level and align Side rail properly; then tighten all hardware at this time.
- Repeat steps 2-6 for passenger Side rail.
- Do periodic inspections to the installation to make sure all hardware is secure and tight.

To protect your investment, wax this product after installing. Regular waxing is recommended to add a protective layer over the finish. Do not use any type of polish or wax that may contain abrasives that could damage the finish.

For stainless steel: Aluminum polish may be used to polish small scratches and scuffs on the finish. Mild soap may be used also to clean the Sidebar.

For gloss black finishes: Mild soap may be used to clean the Sidebar.

Fig 2

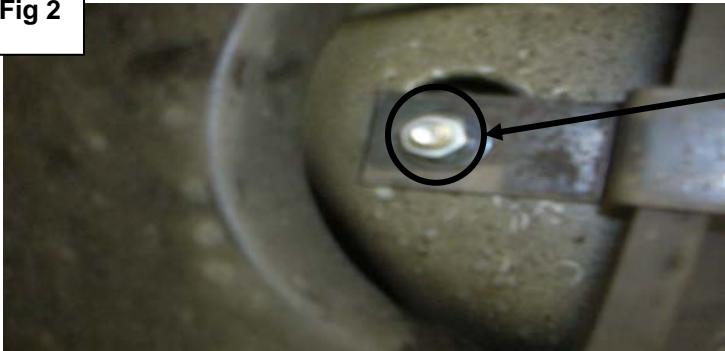


Fig 1A

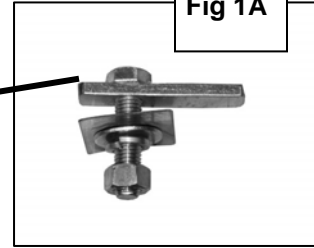
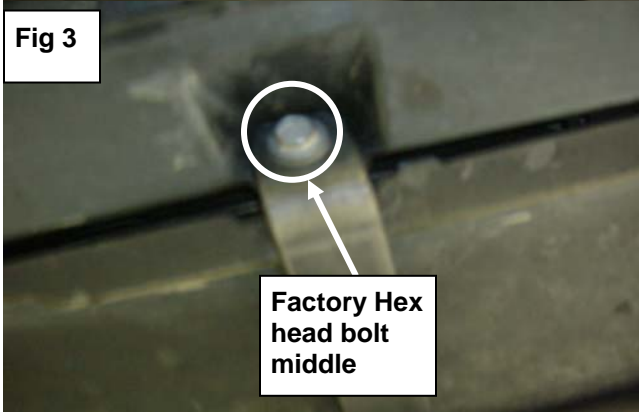
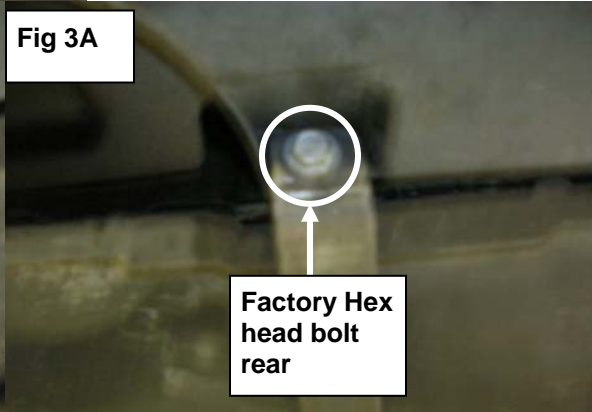


Fig 3



**Factory Hex
head bolt
middle**

Fig 3A



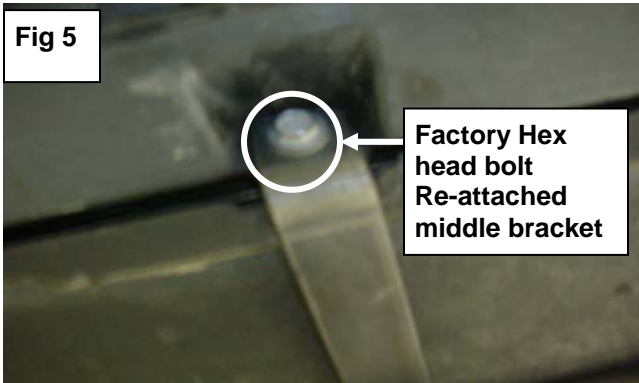
**Factory Hex
head bolt
rear**

Fig 4



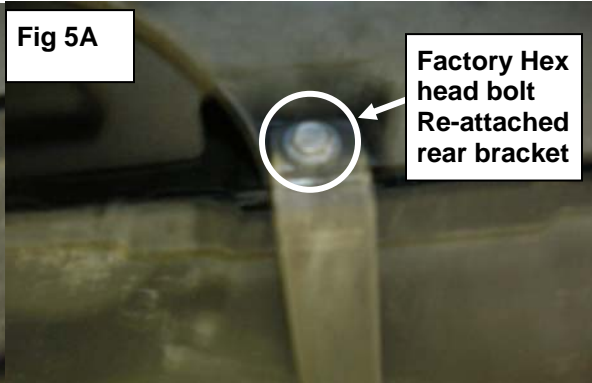
**10mm Flat washer
10mm Lock washer
10mm Nut**

Fig 5



**Factory Hex
head bolt
Re-attached
middle bracket**

Fig 5A



**Factory Hex
head bolt
Re-attached
rear bracket**