

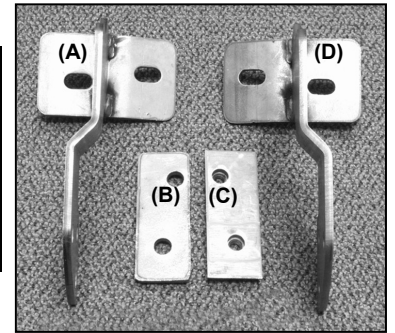


INSTALLATION INSTRUCTIONS

SPORT BAR
2007-10 DODGE NITRO 2008-10 JEEP LIBERTY
PART# 5501

PARTS LIST:

1	Grille Guard	4	12mm Hex Nuts
1	Passenger Side Mounting Bracket (D)	12	12mm Flat Washers
1	Driver Side Mounting Bracket (A)	4	12-1.75mm x 35mm Hex Head Bolts
1	Passenger Side Double Nut Plate (C)	4	12mm Lock Washers
1	Driver Side Double Nut Plate (B)	4	12mm Nylock Nuts
4	12-1.75mm x 30mm Hex Head Bolts		



PROCEDURE:

1. REMOVE CONTENTS FROM BOX. VERIFY ALL PARTS ARE PRESENT. READ INSTRUCTIONS CAREFULLY BEFORE STARTING INSTALLATION.
2. From underside of vehicle, remove the passenger and driver side rubber shroud located by the bumper air inlet (Figure 1).
3. Through bumper air inlet, insert passenger side Double Nut Plate through existing hole on the radiator support (Figure 2). **NOTE:** Use the larger round hole on the radiator support to insert Double Nut Plate.
4. Center holes on the Double Nut Plate with holes on the radiator support.
5. Hang passenger side Mounting Bracket into position by partially threading (1) 12-1.75mm x 35mm Hex Head Bolt, (1) 12mm Flat Washer, and (1) 12mm Lock Washer on the inner side of the Mounting Bracket and trough already inserted Double Nut Plate (Figure 3). From underside of vehicle proceed to install another Bolt with Washer and Lock Washer on the outer side of the Mounting Bracket and trough Double Nut Plate. Do not tighten at this time.
6. Repeat steps 3-5 for driver side.
7. Position Bull Bar on the inner side of Mounting Brackets. Install Bull Bar onto Mounting Brackets using the included (4) 12-1.75mm x 30mm Hex Head Bolts, (4) 12mm Nylock Nuts, and (8) 12mm Flat Washers (Figure 4). Do not tighten at this time.
8. Level and adjust Bull Bar as desired; then tighten all hardware at this time.
9. Do periodic inspections to the installation to make sure that all hardware is secure and tight.

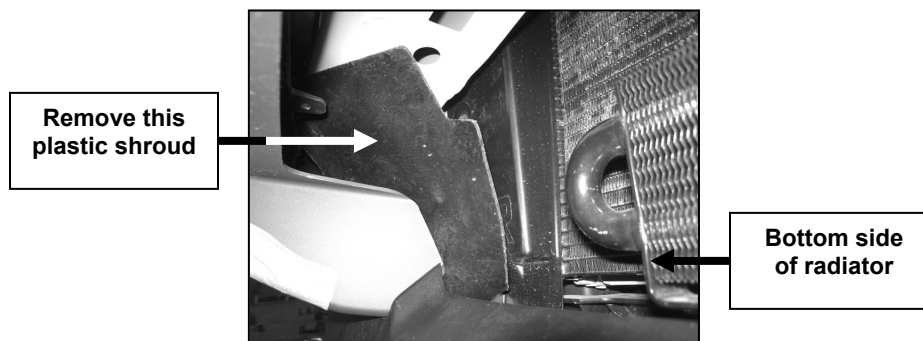


Figure 1

Passenger Side Shown

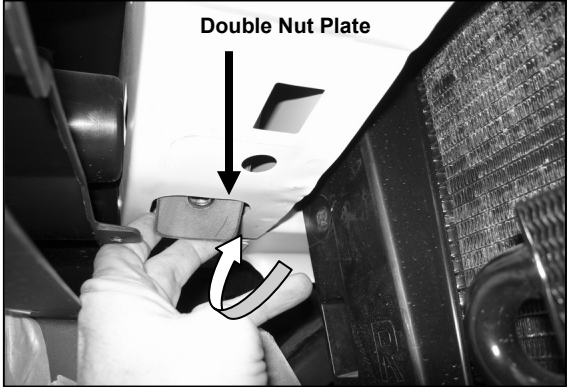
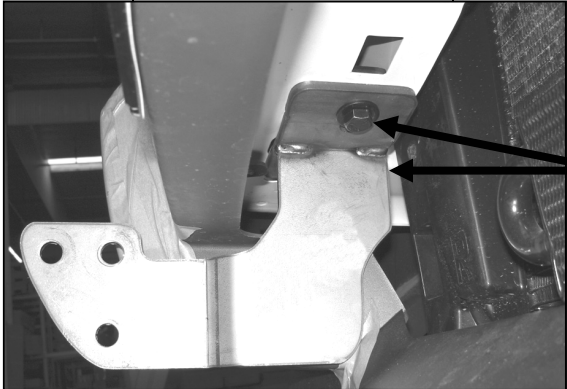


Figure 2

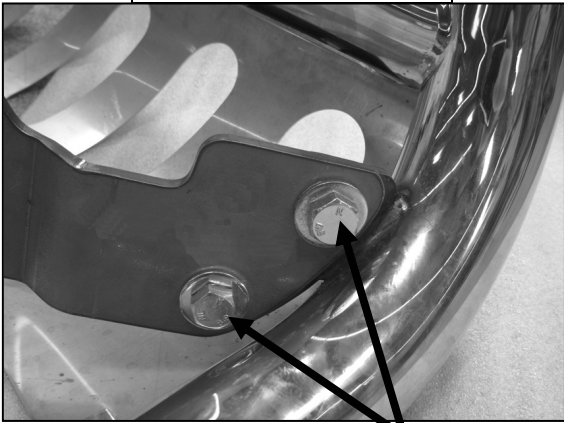
Passenger Side Shown



12mm Head Hex Bolt, &
12mm Flat Washer

Figure 3

Passenger Side Shown



12mm Hex Head Bolts,
12mm Nylock Nuts, &
12mm Flat Washers

Figure 4

Installation Complete



Figure 5