

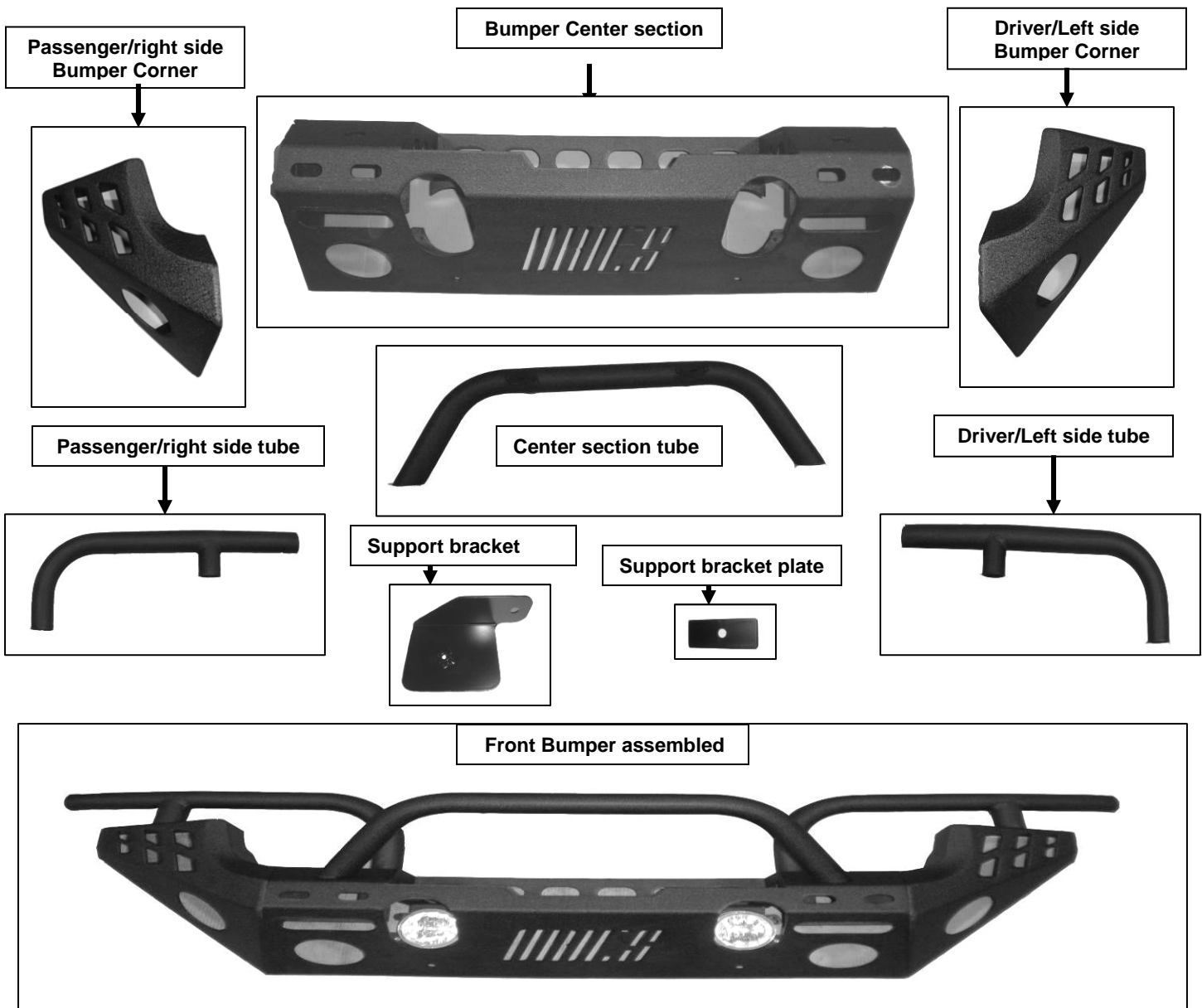
# INSTALLATION INSTRUCTIONS

## 2007-12 WRANGLER FRONT REPLACEMENT BUMPER

### PART # AL15600-3

**PARTS LIST:**

| Qty | Description                             | Qty | Description                     |
|-----|---|-----|---------------------------------|
| 1   | Bumper Center section                   | 8   | 12mm Nuts                       |
| 1   | Bumper Corner Passenger/right side      | 18  | 10mm x 35mm Hex bolts           |
| 1   | Bumper Corner Driver/left side          | 30  | 10mm x 24mm OD Flat washers     |
| 1   | Bumper Center section tube              | 18  | 10mm Lock washers               |
| 1   | Bumper Corner tube Passenger/right side | 12  | 10mm Nuts                       |
| 1   | Bumper Corner tube Driver/left side     | 6   | 4mm Socket cap screws           |
| 8   | 12mm x 35 mm Hex bolts                  | 6   | 4mm lock nuts                   |
| 16  | 12mm x 24mm OD Flat washers             | 12  | 4.25mm ID x 9mm OD Flat washers |
|     |   | 1   | Air pump Support bracket        |
| 14  | 12mm Lock washers                       | 1   | Air pump Support bracket plate  |
| 1   | 8mm x 25mm hex bolt                     | 1   | 6mm x 35mm Hex Bolt             |
| 1   | 8mm lock washer                         | 1   | 6mm Hex nut                     |



## PROCEDURE:

- 1. REMOVE CONTENTS FROM BOX. VERIFY ALL PARTS ARE PRESENT. READ INSTRUCTIONS CAREFULLY BEFORE STARTING INSTALLATION.**
2. Start by removing front plastic skid shield from under the vehicle, using a flat tip screwdriver pry and remove the plastic push pins holding the skid shield, seen in **(Fig 1 & 1A)**
3. Once removed start to remove the top plastic cover there are 2 push pins holding the plastic cover in front of the grill, as seen in **(Fig 2)** with the plastic push pins removed, slide the cover to the left side to allow for access of the inner nuts holding the bumper onto vehicle, as seen in **(Fig 3 & 3A)**, once done continue to remove driver side by sliding plastic to the right side **(Fig 4 & 4A)** shows location of nuts to be removed.
4. Once inner nuts are removed begin to unplug the road lights from the factory wire harness, and unclip the harness from the bumper cover, as seen in **(Fig 5)** once done, remove the outer nuts holding the bumper onto the vehicles frame. as seen in **(Fig 5A & 5B)**
5. With the bumper removed, Select the Passenger & driver side bumper corners and mount each side to the center section, with the supplied (12) 10mm hex bolts, (24) 10mm flat washers, (12) 10mm lock washers & (12) 10mm nuts as seen in **(Fig 6 & 6A)** Snug fasteners as you go along once all fasteners are secure and your happy with the alignment tighten hardware.
6. Once corners are assembled to the center section, begin to install the upper tubes secure the right & left sides with the (4) 10mm hex bolts, (4) 10mm x flat washers and (4) 10mm lock washers, secure the center section tube with the (2) 10mm hex bolts, (2) 10mm x 24mm flat washers and (2) 10mm lock washers as seen in **(Fig 6 & 6A)** align & tighten all hardware.
7. Next remove the factory road lights from the factory bumper and begin to install them into the new bumper with the (3) 4mm Socket cap screws, (6) 4.25mm flat washers & (3) 4mm lock nuts per side as seen in **(Fig 7)** align & tighten all hardware.
8. **NOTE: 2007-2011 MODELS** With help, position the new bumper up and over the factory mounting points & secure the new bumper with (3) 12mm Hex bolts, (6) 12mm x 24mm OD flat washers, (3) 12mm lock washers & (3) 12mm nuts per side, **NOTE:** pending on the year of the vehicle only 3 of the 4 bolts per side will line up when mounting to the factory bumper brackets, as seen in **(Fig 8)** Snug but do not tighten hardware, Plug in the road lights with the wire harness and secure harness to bumper.
9. **NOTE: FOR 2012 MODELS:** With the factory bumper removed you will see the air pump on the drivers side front of frame horn **(Fig 9 shows location)** remove the (2) factory nuts securing it to frame bracket, once removed slip it off the factory studs and temporally move it just off to the side, next with a set of pliers locate the (1) factory stud and bend it back & forth till it breaks off as seen in **(Fig 9A)**. Place the air pump back on the one stud as it came off and secure the one side with the factory nut as seen in **(Fig 9B)**. With help, position the new bumper up and over the factory mounting points & secure the new bumper with (3) 12mm Hex bolts, (6) 12mm x 24mm OD flat washers, (3) 12mm lock washers & (3) 12mm nuts per side, **NOTE:** pending on the year of the vehicle only 3 of the 4 bolts per side will line up when mounting to the factory bumper brackets, as seen in **(Fig 8)** Snug but do not tighten hardware, Plug in the road lights with the wire harness and secure harness to bumper.

10. Next select the air pump support bracket and air pump support bracket plate, place the support bracket in from under & behind the bumper and secure it with the support plate to the bumper using the 8mm hex bolt & lock washer snug but do not tighten as seen in **(Fig 10 & 10A)** with the bracket attached to bumper secure the air pump to the bracket with the 6mm hardware Snug but do not tighten as seen in **(Fig 11)**

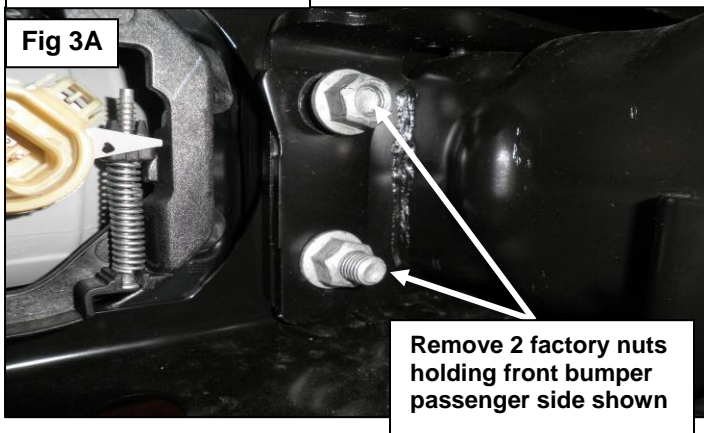
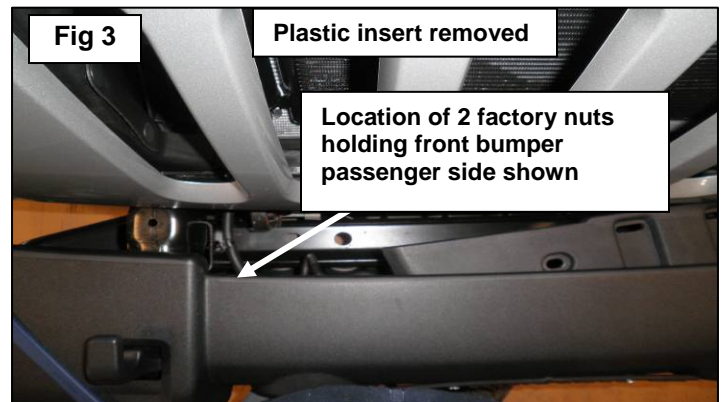
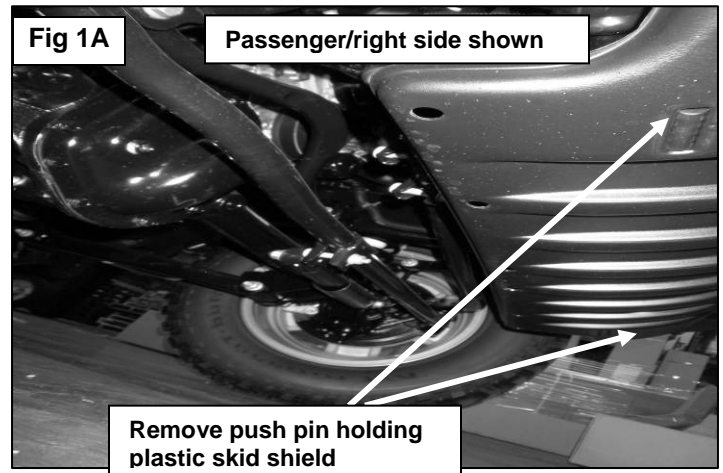
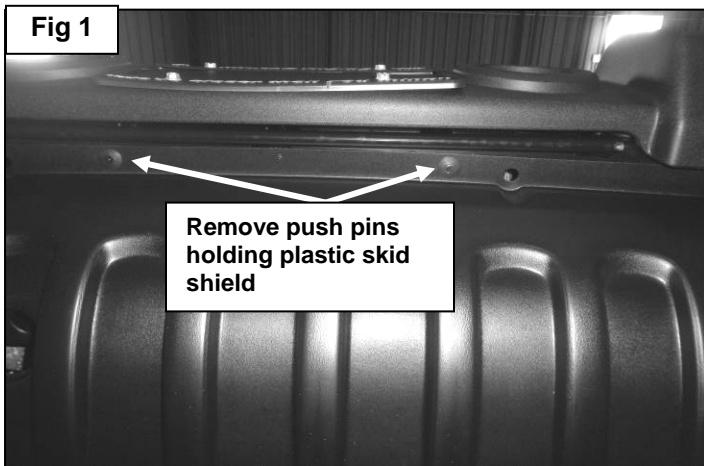
11. Level and adjust the bumper and tighten all hardware.

12. Do periodic inspections to the installation to make sure that all hardware is secure and tight.

**To protect your investment**, wax this product after installing. Regular waxing is recommended to add a protective layer over the finish. Do not use any type of polish or wax that may contain abrasives that could damage the finish.

**For stainless steel:** Aluminum polish may be used to polish small scratches and scuffs on the finish. Mild soap may be used also to clean the Product.

**For gloss black finishes:** Mild soap may be used to clean the Product.



Driver/left side shown

