



# INSTALLATION MANUAL

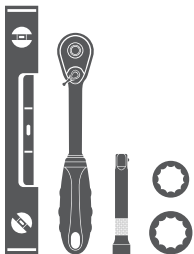
## AL235033

### Parts List

1	Driver / left side bar
1	Passenger / right side bar
2	Driver / left front mounting bracket, (1) 2014 & older (1) 2015+
1	Passenger / right front mounting bracket
1	Driver / left rear mounting bracket
1	Passenger / right rear mounting bracket
1	Driver / left front support bracket
1	Passenger / right front support bracket
5	Hex head bolt, 8mm
5	Flat washer, 8mm
5	Lock washer, 8mm
4	Nut plate, 10mm / Bolt, 12mm x 35mm
4	Hex head bolt, 10mm x 35mm
8	Hex head bolt, 10mm x 50mm
12	Flat washer, 10mm
12	Lock washer, 10mm
2	Bolt plate, 12mm x 40mm
6	Flat washer, 12mm
6	Lock washer, 12mm
6	Hex nut, 12mm
6	Plastic retainer, 12mm
1	Fish wire, 12mm

### Tools Required

Ratchet	Ratchet extension
Socket, 16mm	Level
Socket, 18mm	



### Level of Difficulty

Easy

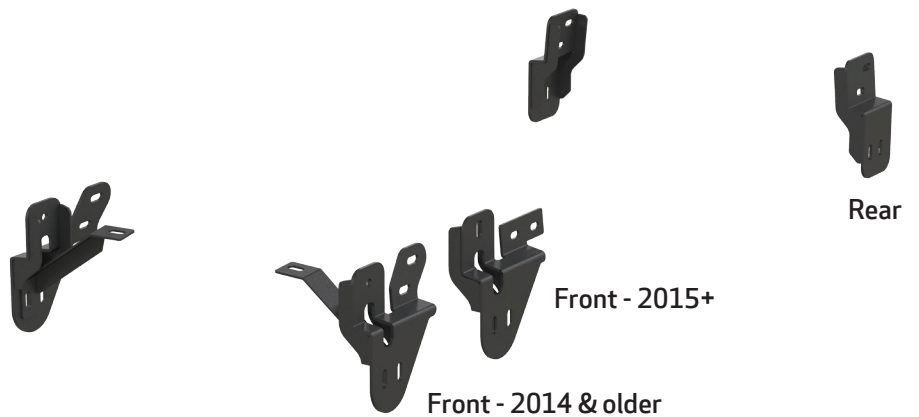


Scan for helpful install tips

### Product Image



### Brackets and Hardware



### Notes and Maintenance

Before you begin installation, read all instructions thoroughly.

Proper tools will improve the quality of installation and reduce the time required.

### Step 1

Starting on the driver side, locate the two mounting locations.



### Step 2

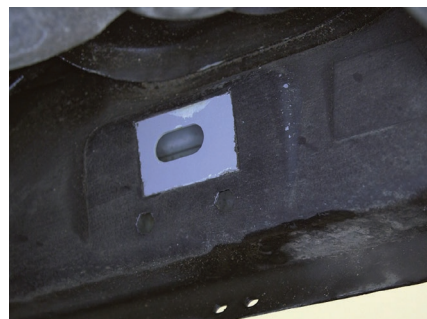
Sort and separate the driver and passenger side mounting brackets. Each bracket is specific to a mounting location.

To help identify each bracket, they have been stamped with the attachment location.



### Step 3

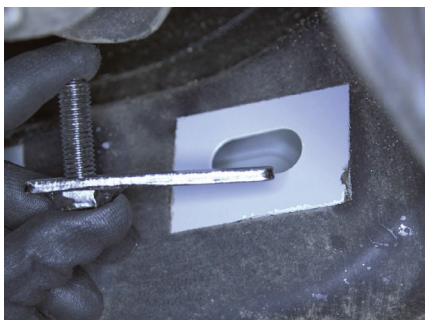
Starting on the driver side front, remove the factory tape covering the oval holes on the inner body panel.



### Step 4

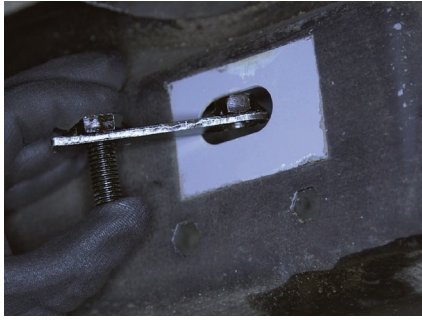
Skip to step 9A if the vehicle has factory-threaded mounting holes (2015 or newer).

Remove the factory-applied tape on the second access hole, and insert a 12mm bolt plate, securing it with a plastic retainer.



### Step 5

Insert a 12mm bolt plate with welded nut into the body panel, and secure it in place with a plastic retainer. Position the bolt plate so the welded nut is facing toward the front of the vehicle.



### Step 6

Lift the front bracket into place, and attach the front bolt with a 12mm flat washer, locking washer and nut.

Snug the hardware, but do not fully tighten.



### Step 7

Rotate the bolt and nut plate until the threaded nut lines up with the mounting location. Fasten with a 10mm x 35mm hex bolt, locking washer and flat washer.



### Step 8

Apply another 12mm flat washer, locking washer and nut onto the last bolt.





### Step 9 - If vehicle has factory-threaded mounting holes (2015 or newer)

Skip to step 10 if the vehicle does not have factory-threaded mounting holes (2014 or older).

Using the provided 12mm fish wire, thread the 12mm x 40mm bolt plate onto the fish wire. Feed the fish wire through the large oval opening and out through the mounting slot, as shown.

Use a plastic retainer to hold the bolt plate in place. Remove the fish wire from the thread of the bolt plate.

Place the bracket onto the vehicle.

Secure the bracket to the vehicle using a 12mm flat washer, lock washer and hex nut.

Finish securing the mounting bracket using an 8mm flat washer, 8mm lock washer and 8mm hex bolt for both of the remaining mounting slots.



### Step 10

To install the front support bracket, locate and remove the front body mount bolt. Lift the support bracket into place, and reattach the factory body mount bolt. Leave the base mount free at this time.

**Note:** Installation of the support bracket is not required for 2011 and newer vehicles.

Snug the hardware, but do not fully tighten.

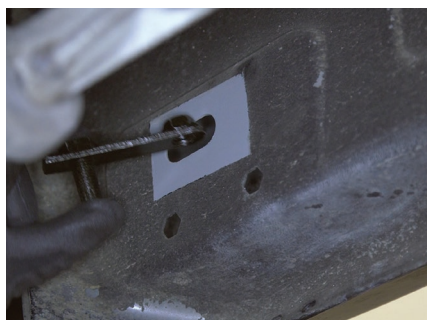


### Step 11

To install the rear bracket, insert the bolt and nut plate by repeating steps 3 and 4. Secure the top of the bracket to the 12mm stud with a flat washer, lock washer and nut.

Rotate the bolt plate to position the nut behind the lower mounting position and secure with a 10mm hex bolt, flat washer and lock washer.

**Note:** 2015 and newer trucks come with 8mm factory threads in the bottom mounting locations. For factory threads, secure the bottom of the bracket with one 8mm hex bolt, lock washer and flat washer.



### Step 12

With help, lift the side bar into position against the mounting brackets, and attach with two 10mm x 50mm hex bolts, locking washers and flat washers on each end of the side bar.

The same 10mm bolt will be used in the front locations to secure the support bracket install in step 10.

Check for level and adjust if necessary. Once aligned, tighten all hardware.



### Step 13

Repeat steps 1 through 12 on the passenger side of the vehicle. On 2015 and newer vehicles with factory threads, the bottom of the brackets will be secured with 8mm hardware instead of the 10mm.

Congratulations on the installation of your new ARIES 4" round Big Step™ side bars.

With the side bars installed, periodic inspections should be performed to ensure all mounting hardware remains tight.

