



PART # 10311: 93-03 FORD RANGER / MAZDA PICK-UP

The Backrack is secured to your truck by fastening a Stake pocket Bolt (C) into each of the two front stake pockets of your truck. The Backrack is then bolted to these stake pocket bolts. If your truck has a bedliner you must remove it so that you can install these bolts. Re - install the bedliner after the stake pocket bolts have been installed.

The stake pocket bolt (C) is an " L " shaped bolt consisting of a 3/4" bolt welded to a 5/8" stud. Insert the 3/4" bolt down into the stake pocket and through the hole inside the stake pocket so that the threads are protruding through the hole. A portion of the 5/8" studs threads should be protruding above the bedrail. Secure the stake pocket bolt into the stake pocket with the 3/4" Flat Washer (D), and the 3/4" Jam Nut (E). The Jam Nut will be difficult to thread on because the threads must cut into the nylon in the nut. This will prevent the nut from loosening. If you have a bedliner you can now install it. If you have an over the rail bedliner you will have to cut or drill holes for the liner to drop over the studs.

Once you have securely installed the Stake pocket Bolts it's time to attach the Railmount Brackets (A) to the Backrack. To do this, fold your tailgate down and place the Backrack on the tailgate with the Backrack decals facing up. Next, attach the Railmount Brackets to each end of the Backrack's bottom tube (60" long with hole at each end). There is a left & right hand railmount bracket so be sure that the " U " shaped channels are facing towards the center of the truck and the angle section of the railmount bracket is on the outer edge so it will sit on the bed rail of the truck. Use the 3-1/2" bolts to attach these brackets to the Backrack and be sure that the head of the bolt will be between the cab of the truck and the Backrack (see drawing) so that the bolt will not hit the cab of your truck when the box flexes. Do not tighten the 3-1/2" bolt assembly at this point, as you will need to adjust the brackets later in the installation.

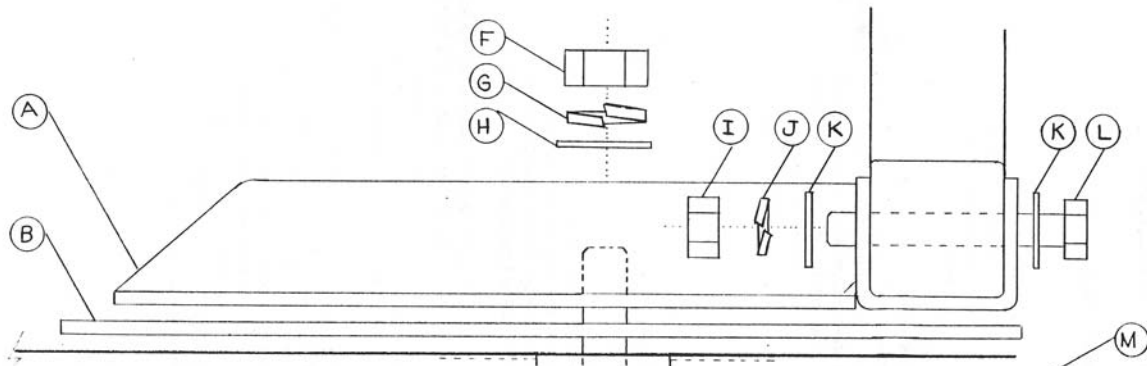
Before you drop the rack assembly over the stake pocket bolts you need to lay the Rail Plates (B) over the stake pocket bolts. The Rail Plates will provide a stronger surface for the Backrack to sit on and will sit in between the Railmount Bracket and the rail of the truck bed. Use the adhesive rubber strips included in the hardware kit to cushion the Rail Plate so as not to damage the paint on your truck. Stick the strips onto the Rail Plate. Do not stick them to your truck.

Now that the Rail Plates are sitting over the Stake pocket Bolts on the bedrail of your truck it is time to install the Backrack. Drop the Backrack complete with the Railmount Brackets attached over the Stake pocket Bolt studs and onto the Rail Plates. Secure to the truck with the 5/8" Flat Washer (H), Lock Washer (G), and Nut (F). Tighten until snug making sure that the lock washer compresses. Now stand behind the truck and check that the Backrack is centered behind the cab. When centered complete the installation by tightening the 1/2" x 3-1/2" bolts that secure the Railmount Brackets to the Backrack. This bolt accounts for the majority of the Backrack's strength and rigidity so be sure to tighten it as tight as possible. We recommend you use an extension for your ratchet.

If you have any questions regarding the installation of a Backrack feel free to call our customer service dept. at 1-800-265-8137 or 905-335-6289 Monday to Friday between 8:30 a.m. and 5 p.m. Eastern Standard Time. Or you can email us at mfg@backrack.ca.

VIEW OF DRIVERS SIDE FROM INSIDE OF TRUCK BED

**BACKRACK PART # 10311
RANGER / MAZDA**



LETTER	DESCRIPTION
A	RAILMOUNT BRACKET
B	RAIL PLATE
C	STAKEPOCKET BOLT
D	3/4" FLAT WASHER
E	3/4" JAM NUT
F	5/8" NUT
G	5/8" LOCK WASHER
H	5/8" FLAT WASHER
I	1/2" NUT
J	1/2" LOCK WASHER
K	1/2" FLAT WASHER
L	1/2" X 3-1/2" BOLT
M	RAIL OF TRUCKBED

