



Part# 10502

1997- 03 FORD F150/250 LIGHT DUTY



Please refer to the drawings on the back of this sheet

READ THIS NOW! Your truck should look like the one shown above. If you think you are missing any parts, think that this part number is not for your truck, or have any installation questions, call our customer service dept at 1-800-265-8137 or 905849-3633. We will be happy to rectify any problems with you directly. This will be much faster and more efficient for you. Other ways to reach us.....E-mail: mfg@backrack.ca or fax 905-849-4116.

The Backrack is secured to your truck with a pair of Stake Pocket Bolts specifically designed for your make and model of truck. These bolts mount into each of the two front stake pockets. The Backrack assembly sits on the bed rails of your truck and is secured to these Stake Pocket Bolts. If your truck has a BEDLINER we suggest you remove it to install the Stake Pocket Bolts.

STEP 1: Install the Stake Pocket Bolts into the front stake pockets.

- 1) Remove plastic cover to expose stake pocket.
- 2) Thread square plate onto short end of L shaped bolt as far as possible.
- 3) Insert thread through hole in side wall of stake pocket. Square plate sits against the inside wall of the stake pocket.
- 4) Finish securing to pocket with large 1/2" flat washer, 1/2" lock washer, and nut (coarse thread).

NOTE: Be sure to use the 1/2" nut with the correct threads. The kit contains both coarse and fine threads.

STEP 2: Attach the Railmount Brackets to the Backrack Frame.

- 1) Drop the tailgate and lay the Backrack on the tailgate (decals up) with long tube nearest you.
- 2) Slide Railmount Bracket on to end of tube so the oblong slot aligns with hole in end of tube.
- 3) Secure to Backrack with 1/2" bolt assembly (1/2" x 3-1/2" Bolt, lock washer, flat washer, nut fine thread).
- 4) Do not tighten at this time. Keep loose for adjustment later in installation.
- 5) There is a LH & RH Railmount Bracket. Refer to photos for proper fit.

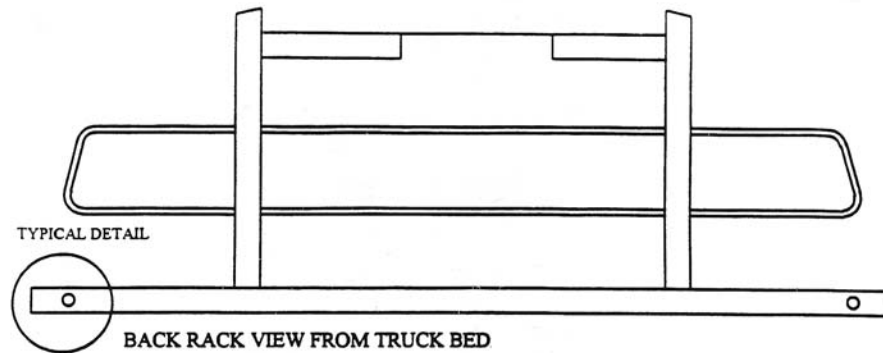
STEP 3: Place Backrack assembly c/w Railmount Brackets attached on to bed rail.

- 1) Place the Backrack assembly on the bed rails).
- 2) The holes in the Railmount Bracket will drop over the threaded portion of the Stake Pocket Bolt.
- 3) The square nut welded to the bottom of the Railmount Bracket sits inside the stake pocket. It's purpose is to stop the Backrack assembly from shifting forward by hitting the front of the pocket.
- 4) Secure the Backrack assembly to the truck using the W' lock washer and nut (coarse thread).

STEP 4: Center Backrack behind cab and tighten all fasteners.

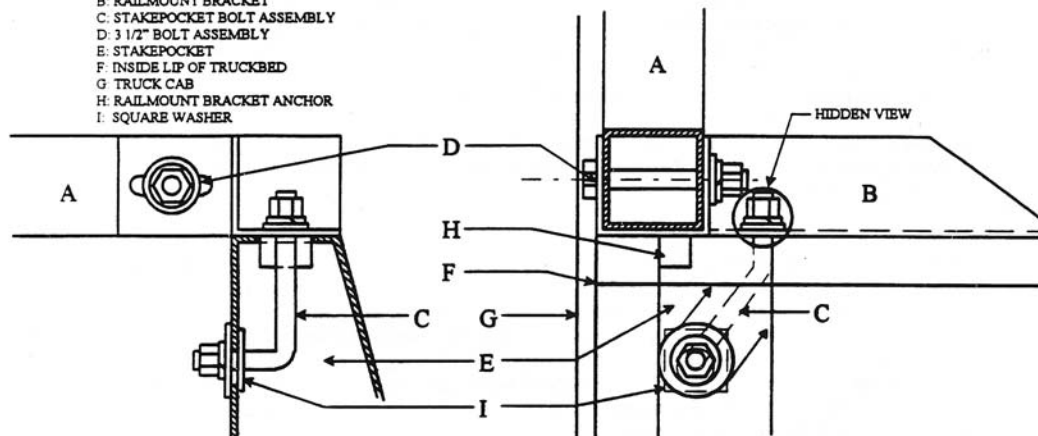
- 1) Stand at the rear of the truck and visually center the Backrack behind the cab.
- 2) Finish the installation by tightening all nuts and bolts.
- 3) DO NOT OVER TIGHTEN THE STAKE POCKET BOLTS. The plastic on the bed rail will collapse as you tighten the nut. Use your discretion). Tighten until snug.
- 4) The 1/2" x 3-1/2" bolt assembly should be tightened as firmly as possible with an extension handle.

Contact us @ 905-849-3633 or 1-800-265-8137. Fax 905-849-4116. E-mail: mfg@backrack.ca
WEBSITE: www.backrack4trucks.com



DESCRIPTION

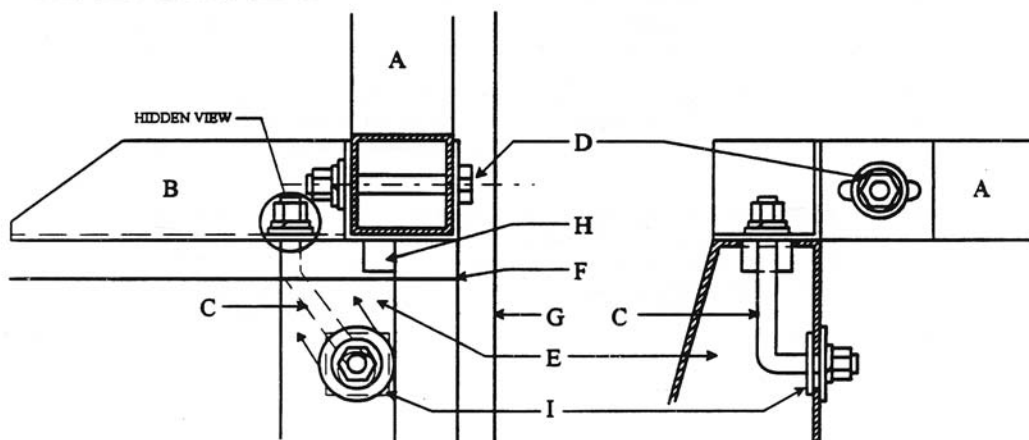
- A BACK RACK
- B RAILMOUNT BRACKET
- C STAKEPOCKET BOLT ASSEMBLY
- D 3 1/2" BOLT ASSEMBLY
- E STAKEPOCKET
- F INSIDE LIP OF TRUCKBED
- G TRUCK CAB
- H RAILMOUNT BRACKET ANCHOR
- I SQUARE WASHER



VIEW FROM INSIDE TRUCK BED TO CAB

VIEW FROM INSIDE OF TRUCK BED TO SIDE PANEL

PASSENGERS SIDE



VIEW FROM INSIDE OF TRUCK BED TO SIDE PANEL

VIEW FROM INSIDE TRUCK BED TO CAB

DRIVERS SIDE