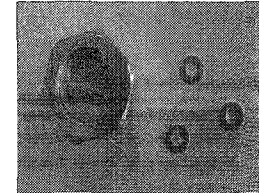
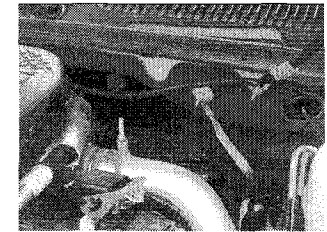


Installation of Fuel Rail Valve Shim Kit GM 6.6L Duramax, 2004.5 - 2006 Models LLY & LBZ

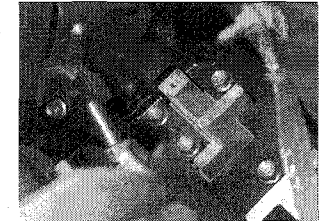
This kit includes a Separation tool and (3) .20" shims



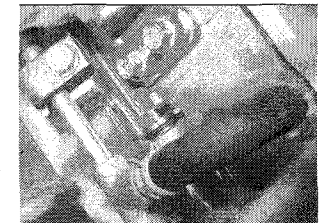
1. View Glow Plug Controller mounted on Driver Side Firewall. Remove 2 bolts holding the controller case cover.



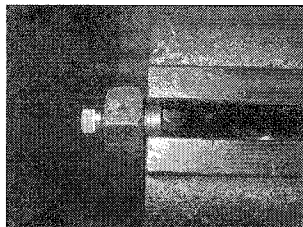
2. Remove the 5 bolts shown, four on the case and 1 on the metal tubing shown. Remove black metal casing under the bolts to access the fuel pressure valve.



3. Fuel pressure valve can now be seen after removing Glow Plug Controller assembly. Unscrew valve and remove from fuel rail. Photo shows valve loosen and unthreaded most of the way.



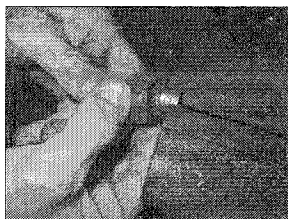
4. Take valve and thread supplied nut tool onto valve. Then place valve in a vice, clamping down on sides of valve cap.



5. Use a wrench to unscrew supplied nut in order to remove valve cap. Be careful to hold end of valve while doing this! It is spring loaded and you don't want to lose parts!



6. Another view of removing the valve cap after loosening in step 5.



7. Removing metal spring, then insert the two supplied metal shims into valve. 3 shims are supplied with your MP-8 module, however only 2 need to be used.



8. Place valve back in vice, now with a thick piece of cardboard or piece of wood behind valve cap to prevent damage to the valve seal surface. Tighten vice so that the valve cap reenters valve until fully seated. No need to over-tighten; just tighten until snug.



9. Replace valve spring and then cap. Note that there are 3 holes in a triangle position on the inside of the valve cap that does not need to be removed from cap and should face towards spring as it did when it was removed, hole alignment is not necessary.



10. Take a small punch and small hammer and re-apply the 3 factory indentations along the lip where the valve casing covers the valve cap. You may need to loosen the vice slightly to rotate the valve to access all 3 indentations, but do not let the spring push the cap out any! Make sure that the cap stays fully seated in valve while rotating. After doing so loosen the vice and make sure that the valve cap is held by the indentations. Then replace the valve back in your vehicle, replace the black metal casing, and reassemble the Glow Plug Controller Casing.



If there are any questions on the product or installation, give us a call