



9400 7TH ST. UNIT C-1  
 Rancho Cucamonga, CA 91730  
 (909) 476-7225 TECH SUPPORT  
 (909) 476-1491 FAX  
 www.volantperformance.com

**PART NO. 16659**

MAKE	MODEL	YEAR	LITER
DODGE	CUMMINS	96-02	5.9

**ACCESSORIES:**

	PART NO.
VOLANT REPLACEMENT FILTER	5151
AIR FILTER CLEANER KIT	5110
VOLANT PREFILTER	51902

**INSTALLATION INSTRUCTIONS PART NO. 16659**

READ INSTRUCTIONS THOROUGHLY BEFORE DISASSEMBLING. DO NOT SKIP ANY STEPS. ANY QUESTIONS ON A VOLANT KIT MAY BE REFERRED TO OUR TECH SUPPORT LINE AT (909) 476-7225 OR VISIT OUR WEBSITE AT WWW.VOLANTPERFORMANCE.COM

**TOOLS NEEDED FOR INSTALL:**

1. 5/16 NUT DRIVER OR FLAT HEAD SCREWDRIVER
2. PHILLIPS HEAD SCREWDRIVER

**INSTALLATION:**

1. Disconnect negative battery cable.
2. Using a 5/16 nut driver or flat head screwdriver, loosen clamp that holds stock intake duct to turbo Blower and the clamp that connects stock intake duct to the stock filter box. Remove stock intake duct from engine compartment.
3. Remove stock filter box from engine compartment by lifting stock filter box off of factory mounting posts. Remove three (3) rubber grommets from base of stock filter box and relocate all three (3) rubber grommets into base of new Volant filter box.
4. Apply the 1/2" X 17 3/4" vinyl trim w/sponge around the 5 1/2" opening of the Volant filter box. Align the Volant filter box assembly over factory mounting posts and press box firmly down onto mounting posts.
5. Slide 4" x 3" sleeve over turbo blower inlet and secure #064 clamp using a 5/16 nut driver or flat head screwdriver.

6. Feed the Volant intake duct through the Volant filter box. Connect opposite end of the Volant intake duct to 4" X 3" sleeve and turbo blower. Secure #064 clamp using 5/16 nut driver or flat head screwdriver.
7. Place Volant ram filter w/clamp in the Volant filter box. Secure ram filter to the Volant intake duct using 5/16 nut driver or flat head screwdriver.
8. Cover the Volant filter box with the Volant filter box lid. Align the lid and fasten all four (4) 1/4"-20 truss head screws along with the 1/4" rubber washers. Tighten all four (4) 1/4"-20 truss head screws with a phillips screwdriver.
9. Make sure everything is properly connected.
10. Reconnect negative battery cable.

**WARNING: OVER TIGHTENING HARDWARE MAY ALTAR THE INTEGRITY OF THE VOLANT AIR INTAKE SYSTEM.**

**BEFORE ROAD TESTING**

1. Start engine, leaving the transmission in park and securing the parking brake.
2. Make sure to look and listen for any unusual noises or air leaks. Repair problems if needed.
3. Once completed it will be necessary to check periodically for realignment and tightening of all connections.
4. Once all tests are completed, enjoy the performance of your new Volant Air Intake System.

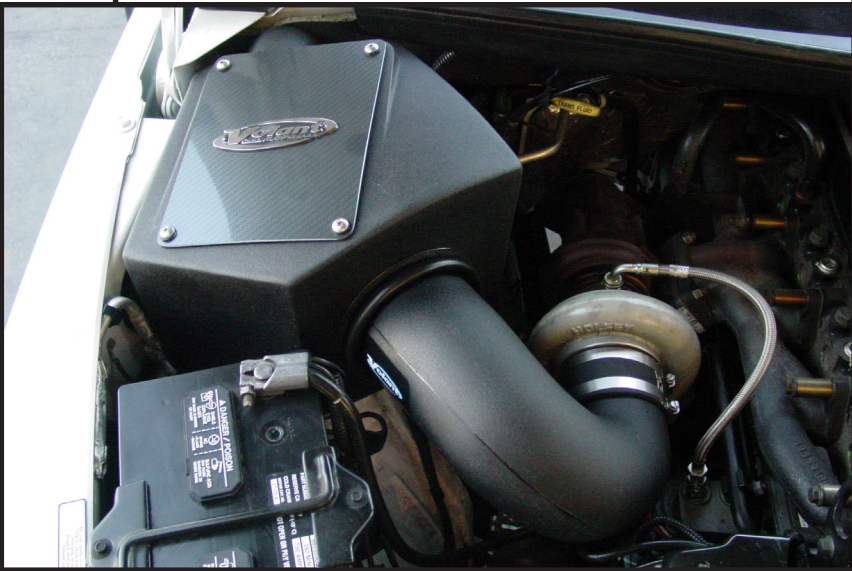
**CARE AND CLEANING**

Check the cotton reusable filter periodically and remove any excessive dirt build-up by tapping the filter on the ground and brushing off the loosened dirt. Clean the filter by using Volant's Filter Recharger Kit. Volant's Filter Recharger Kit is designed to restore original air flow. Re-oil every 10,000 miles without cleaning to improve filtering in sand and dirt. Clean only when dirt is very excessive or 50,000 miles.

**16659 INSTALLATION**

List of component parts (please confirm that you have all parts before starting the installation)

- 1 VOLANT FILTER BOX
- 1 VOLANT FILTER BOX LID
- 1 VOLANT AIR DUCT
- 1 RAM FILTER W/CLAMP
- 1 4" X 3" SLEEVE
- 2 #064 CLAMPS
- 4 1/4"-20 TRUSS HEAD SCREWS
- 4 1/4" RUBBER WASHERS
- 1 1/2" X 17 3/4" RUBBER TRIM W/ SPONGE

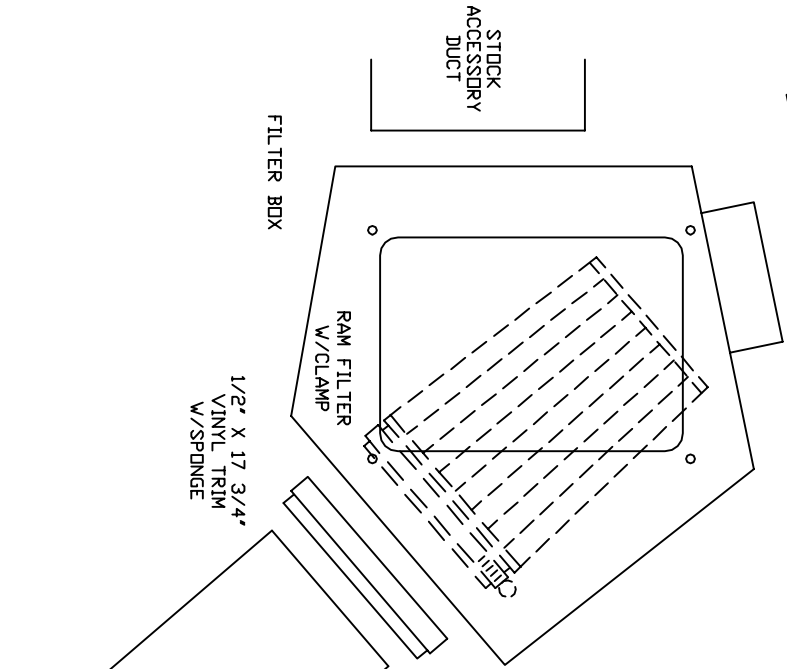


VOLANT AIR INTAKE SYSTEMS  
 PART NO.: 16659  
 INSTALLATION INSTRUCTIONS  
 WWW.VOLANTPERFORMANCE.COM  
 TECH SUPPORT: (909) 476-7225

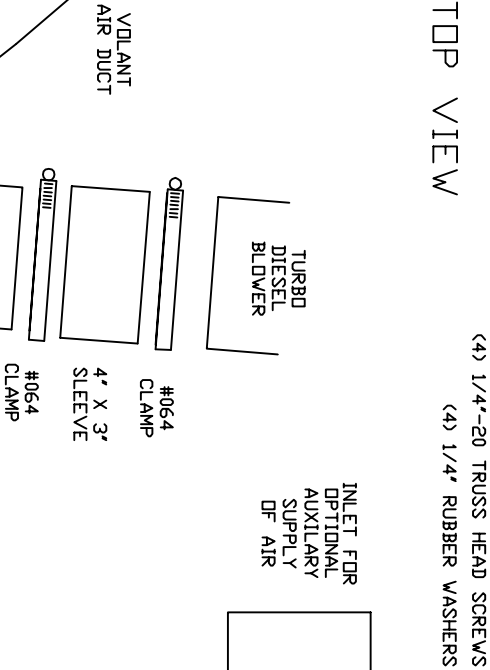
16659 PARTS LIST			
1	VOLANT FILTER BOX	4	1/4" RUBBER WASHERS
1	VOLANT FILTER BOX LID	1	1/2" X 17 3/4" VINYL TRIM
1	VOLANT AIR DUCT		
1	RAM FILTER W/CLAMP		
1	4" X 3" SLEEVE		
2	#064 CLAMPS		
4	1/4"-20 TRUSS HEAD SCREWS		



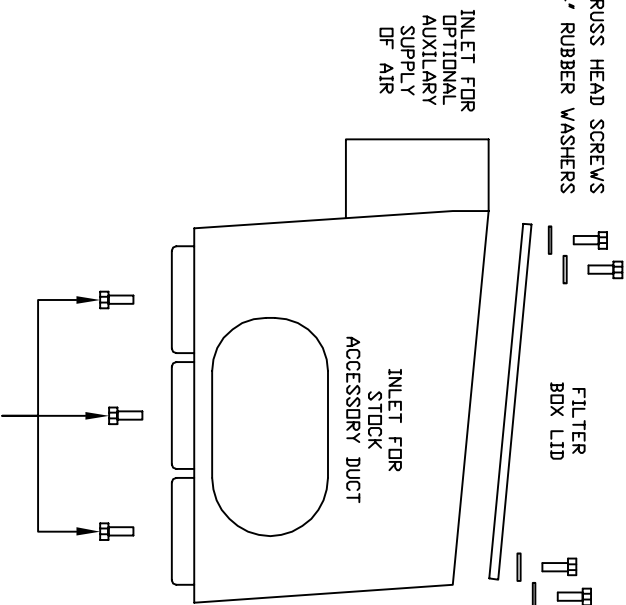
UNDERNEATH PASSENGER  
 WIPER BLADE



TOP VIEW



LEFT SIDE  
 VIEW



NOTE: ATTACH THE VOLANT FILTER BOX OVER THE THREE EXISTING STOCK RUBBER GROMMETS & STUDS LOCATED IN THE SAME LOCATION AS THE PREEXISTING STOCK FILTER BOX.