







# Installation Instructions

## HighRock 4x4™ Entry Guard

### Vehicle Application:

- Jeep JK Wrangler and Wrangler Unlimited  
2007 – Current  
Part Number: 51051

[www.Bestop.com](http://www.Bestop.com) - We're here to help! Visit our web site and click on "[Ask a Question](#)". Click here for more [Jeep® Accessories by Bestop](#).

| INSTALLATION TIME  | SKILL LEVEL  |
|--|--|
| <br><b>1/4 Hour</b> | <br><b>1 - Easy</b>                 |
| TOOLS  |  |
| <br>Safety Glasses  | <br>50/50 Solution<br>Alcohol/Water |



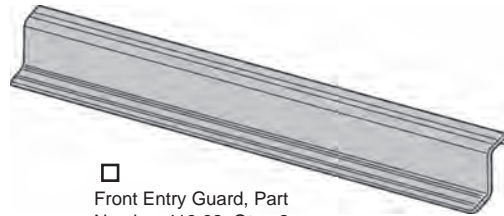
**⚠ WARNING** This product is designed primarily to enhance the appearance of the vehicle. Do not rely in any way on the components of this product to protect against injury or death in the event of an accident. Never operate the vehicle in excess of manufacturer's specifications.

### WEAR SEAT BELTS AT ALL TIMES

Read and follow, precisely, all installation instructions provided when installing product. Failure to do so may result in a poor fit and could place occupants of the vehicle in a potentially dangerous situation.

# HighRock 4x4™ Entry Guard Installation Instructions

## Parts List and Hardware Identification



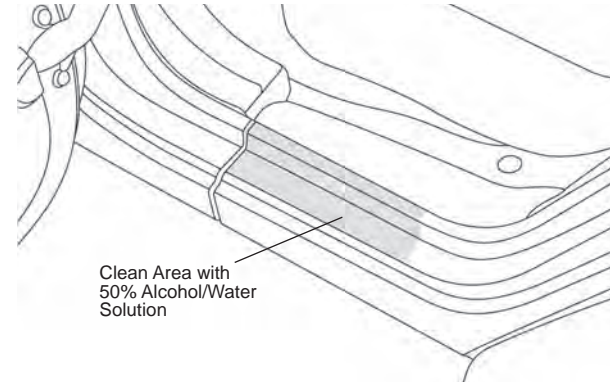
□ Front Entry Guard, Part Number 418.62, Qty - 2



□ Rear Entry Guard, Part Number 424.16, Qty - 2

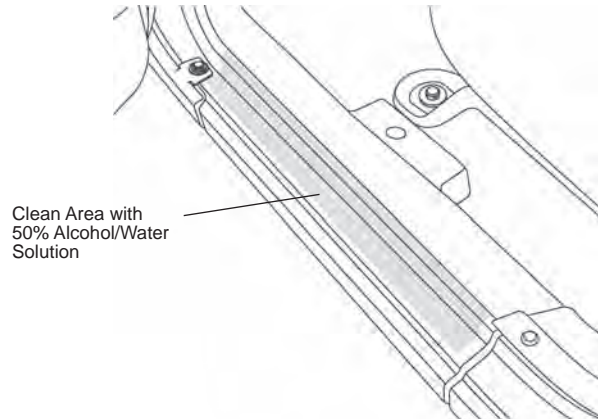
## 2 Prepare Rear Door Sill – 4 Door Vehicles Only

Wash and dry the rear door sill on both sides of the vehicle. Wipe the installation area on each sill with a 50% alcohol, 50% water solution.



## 1 Prepare Front Door Sill

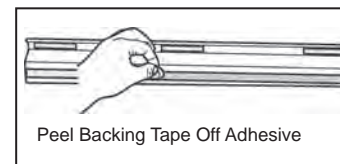
Wash and dry the front door sill on both sides of the vehicle. Wipe the installation area on each sill with a 50% alcohol, 50% water solution.



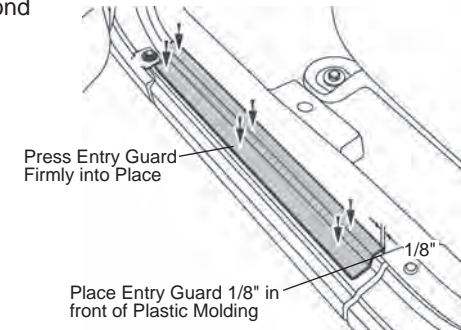
## 3 Install Front Entry Guards

Peel the backing tape off one of the Front Entry Guards. Place the Guard on the door sill 1/8" in front of the plastic molding. Press it firmly into place. Repeat with the other Front Entry Guard.

**NOTE** The adhesive requires 24 hours to fully set and bond to the vehicle.



Peel Backing Tape Off Adhesive



Press Entry Guard Firmly into Place

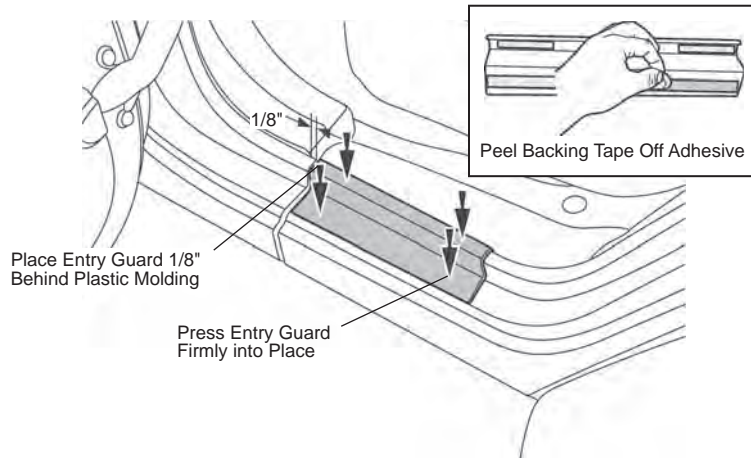
Place Entry Guard 1/8" in front of Plastic Molding

## HighRock 4x4™ Entry Guard Installation Instructions

### 4 Install Rear Entry Guards – 4 Door Vehicles

Peel the backing tape off one of the Rear Entry Guards. Place the Guard on the door sill 1/8" behind the plastic molding. Press it firmly into place. Repeat with the other Rear Entry Guard.

**NOTE** The adhesive requires 24 hours to fully set and bond to the vehicle.



### LIMITED WARRANTY

We warrant our product to be free from defects in material and workmanship, for the terms specified below, provided there has been normal use and proper maintenance. This warranty applies to the original purchaser only. All remedies under this warranty are limited to the repair or replacement of any item or items found by the factory to be defective within the time period specified. If you have a warranty claim, first you must call our factory at the number below for instructions. You must retain proof of purchase and submit a copy with any items returned for warranty work. Upon completion of warranty work, if any, we will return the repaired or replaced item or items to you freight prepaid. Damage to our products caused by accidents, fire, vandalism, negligence, misinstallation, misuse, Acts of God, or by defective parts not manufactured by us, is not covered under this warranty.

THE WARRANTY TIME PERIOD IS AS FOLLOWS FOR REPLACE-A-TOP™, SAILCLOTH REPLACE-A-TOP™, SUPERTOP®, SUPERTOP® REPLACEMENT SKINS, SUNRIDER®, AND TIGERTOP®: TWO YEARS FROM DATE OF PURCHASE.

THE WARRANTY TIME PERIOD IS AS FOLLOWS FOR ALL OTHER "SOFT GOODS" MANUFACTURED BY OUR COMPANY (USING PRIMARILY VINYL, PLASTICS, AND/OR FOAM): ONE YEAR FROM DATE OF PURCHASE.

THE WARRANTY TIME PERIOD IS AS FOLLOWS FOR ALL OTHER "HARD GOODS" MANUFACTURED BY OUR COMPANY (USING PRIMARILY METALS, PLASTICS, AND/OR FIBERGLASS): ONE YEAR FROM DATE OF PURCHASE.

ANY IMPLIED WARRANTIES OF MERCHANTABILITY AND/OR FITNESS FOR A PARTICULAR PURPOSE CREATED HEREBY ARE LIMITED IN DURATION TO THE SAME DURATION AND SCOPE AS THE EXPRESS WRITTEN WARRANTY. OUR COMPANY SHALL NOT BE LIABLE FOR ANY INCIDENTAL OR CONSEQUENTIAL DAMAGE.

Some states do not allow limitations on how long an implied warranty lasts, or the exclusion or limitation of incidental or consequential damages, so the above limitations or exclusions may not apply to you. This warranty gives you specific legal rights, and you may also have other rights which vary from state to state.



For further information or request for warranty work, please contact:

Bestop Inc. Customer Service

Toll-Free: (800)845-3567

Main: (303)465-1755

E-mail: [csbestop@Bestop.com](mailto:csbestop@Bestop.com)

Website: [www.Bestop.com](http://www.Bestop.com)