



BX1825 Installation Instructions 2000-04 Nissan XTerra (V-6) 2001-04 Nissan Frontier (2WD/ 4WD)

Serial No.

The baseplate mounts to the top of the frame and frame brackets. The attachment tabs will extend through the grill opening four inches. A plastic molded guard located directly behind the bumper is permanently removed (2000 model only). Six 13/32" holes need to be drilled for installation.

1. Remove the bolt that holds the rod support to the outside ends of the bumper. Remove the push pins from bottom of bumper. Locate the bolt above the rods that holds the outside edges of bumper to the frame (in front of the tires and above the rubber cushion). Facing the bumper and looking through the grill are bolts that fasten the bumper to the outside brackets and to each frame. Reach inside the grill opening and remove these bolts. Remove the bolts holding the plastic guard to the bumper. Be careful the bumper does not fall.

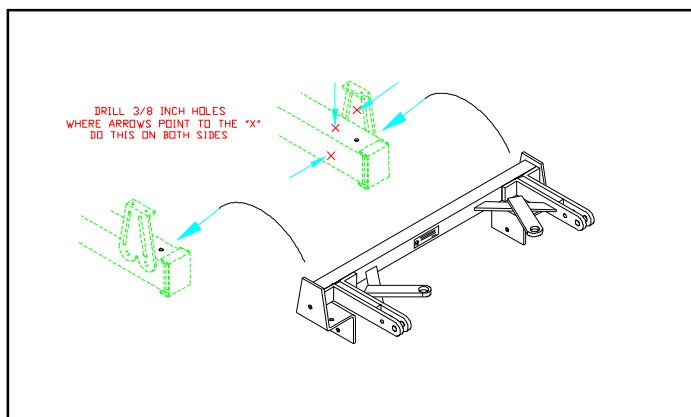


Diagram 1

2. Locate the two existing holes on top of each frame, place the baseplate (Item 1) on the frame. Line up the top front hole to the existing holes. **Note:** Some models may not have the hole in the top of frame. Clamp baseplate to frame with vise grips, slide bumper into its original position and adjust baseplate forward as needed. Remove bumper. Using the baseplate as a template, drill all holes, both sides. See Diagram 1.
3. Inside the frame is a piece of metal obstructing the top back holes. Use a screw driver to push the metal back so a bolt can be inserted. On the front of each frame is a piece of metal. Pry open a large enough gap so the wire nuts (Item 2) can be inserted. See Diagram 2.
Note: Some models may have end cap welded to frame and will require a 1" holes to be drilled into end of frame with the 1" holes saw.

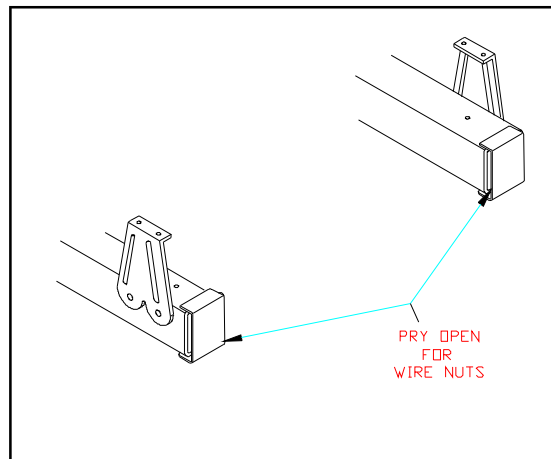


Diagram 2

4. Bolt the baseplate to the frame. Be sure and use loctite on all bolts before tightening. Tighten all bolts according to torque chart in the General Instruction sheet.
5. Replace the bumper. **Note: The plastic piece removed in Step 3 is not replaced (2000 Models only). Be sure to give the piece to the owner.**
6. Install the tow bar and safety cables according to the instructions included in their packages.
7. Do not substitute other devices if the tow bar pins or clips are lost.
8. **DEALER OR INSTALLER: BE CERTAIN THE USER RECEIVES THE INSTRUCTION SHEET.**





Strong As An Ox™

Tools Required

10MM Wrench
Phillips Screw Driver
1" Hole Saw

10MM Socket
Small Pry Bar

12MM Wrench
3/8 Drill Bit

12MM Socket
Loctite Red

Parts List

| Ref. No. | Qty. | Part No. | Description |
|----------|------|----------|---|
| 1 | 1 | 61-5449 | Weldment Baseplate, BX1825 |
| 2 | 6 | 61-4902 | 3/8 Wire Nut |
| 3 | 8 | 201-0368 | 3/8-16 x 1 1/4 Hex Bolt, Grade 5 |
| 4 | 2 | 202-0003 | 3/8 Hex Nut |
| 5 | 8 | 203-0010 | 3/8 Lock Washer |
| 6 | 2 | 201-0553 | 1/4-20 x 1/2 Self Tapping Screw |
| 7 | 2 | 101-5822 | Adapter, 4 Way Connector |
| 8 | 2 | 201-0192 | #10-32 x 1/2 Screw |
| 9 | 2 | 202-0047 | #10-32 Hex Nut |
| 10 | 2 | 203-0054 | #10 Lock Washer |
| | 2 | 226-0049 | Baseplate Safety Cable, 36" CL IV (Not Shown) |
| | 4 | 229-0512 | Quicklink, 1/2, ZP (Not Shown) |

