

# Instructions

## ***Cast Aluminum Front End Cover for DANA 30***

*(see [www.bmracing.com](http://www.bmracing.com) for the latest vehicle fitment applications and model years)*

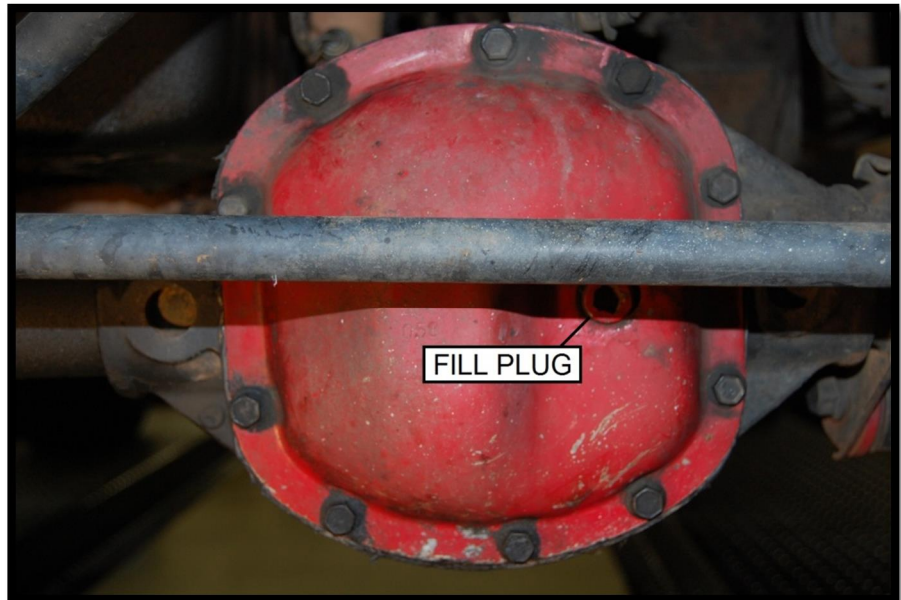
**Part Number 10310/11310**

© 2014, 2013 by B&M Racing and Performance Products

This **B&M Cast Aluminum Front End Cover** has been designed to work on most vehicles equipped with a Dana 30 axle. The **B&M Cast Aluminum Front End Cover** provides several advantages over stock factory covers. The extra capacity provides increased oil volume and added cooling, while the thick aluminum construction increases case rigidity. The magnetic drain plug feature allows regular gear oil changes without the usual mess, and limits ferrous debris from circulating in the axle.

### **INTRODUCTION**

This cover can be installed in about an hour by carefully following the instructions. It is suggested that the vehicle be allowed to cool off for a few hours to avoid burns from hot oil and parts. The vehicle should be off the ground for ease of installation - jack stands, wheel ramps or a hoist will work fine. **MAKE SURE VEHICLE IS FIRMLY SUPPORTED - DO NOT WORK UNDER A VEHICLE IF IT IS SUPPORTED BY ONLY A JACK!** Try to raise the vehicle 1-2 feet so you will have plenty of room to work. Also, have a



small box to put bolts in and a drain pan to catch oil.

### **INSTALLATION**

**STEP 1.** Clean axle housing cover area from dirt and other debris.

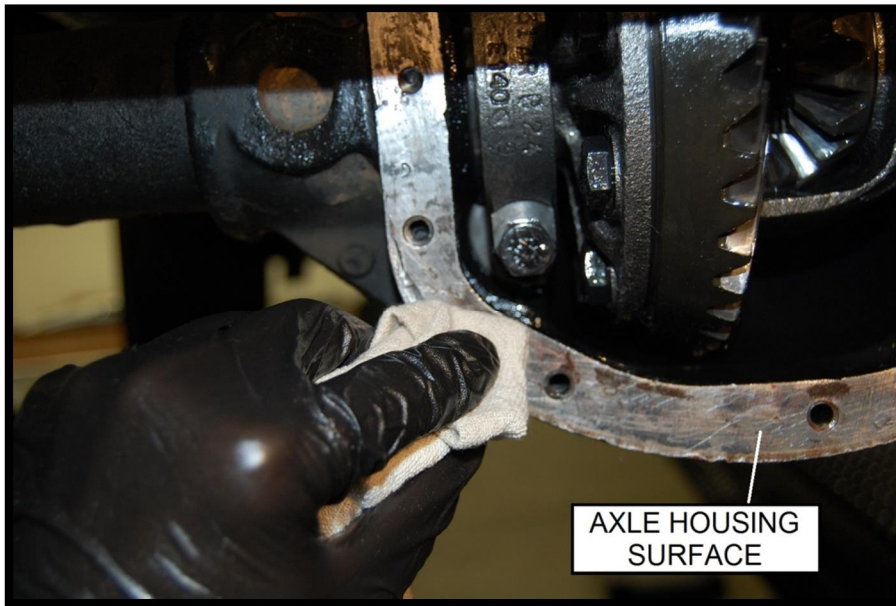
**NOTE: On some vehicles it might be necessary to remove some parts (e.g. sway bar, panhard rod) to make the installation of the cover easier.**

**STEP 2.** Place a drain pan underneath the axle housing.

**STEP 3 (OPTIONAL).** Loosen the fill plug with a 3/8" square ratchet and extension. This is done as a precaution; if stock cover needs to be re-installed for any reason, there will be no question whether the plug is seized or cannot be removed.

**STEP 4.** Remove the 10 bolts around the cover.

**STEP 5.** Carefully pry the cover



loose with a flat head screw driver, being careful not to damage the surface, and allow the oil to drain.

**STEP 6.** Using a dry lint free rag, clean the accessible areas of the axle housing and check internal components for visible excessive wear or other problems.

**STEP 7.** Clean all gasket material from the axle housing surface.

**STEP 8.** We recommend running a 5/16"-18 tap through each threaded cover hole on the axle housing to ensure an accurate torque on all bolts.

**STEP 9.** Apply a bead of RTV silicone gasket maker to the **B&M**

**Cast Aluminum Front End Cover.**

Run the bead inside the bolt holes.

**STEP 10.** Install the **B&M Cast Aluminum Front End Cover** on the axle housing using a supplied bolt and washer at a bottom hole on the cover so it can be used as a guide.

**STEP 11.** Install the rest of the supplied bolts and washers and torque to 15 ft/lb in a crisscross pattern.

**STEP 12.** Install the supplied magnetic 1/4" NPTF drain plug on the **B&M Cast Aluminum Front End Cover** and tighten.

**STEP 13.** This **B&M Cast**

Aluminum Front End Cover has 2 fill holes, each at a different height to accommodate application. Match the height of the drain hole from the B&M Cast Aluminum Front End Cover with the height of the drain hole from the stock cover. Once that is determined, apply RTV to threads on fill plug, and install the fill plug to the fill hole that will not be used.

**STEP 14.** Fill with factory recommended gear oil using the **B&M Cast Aluminum Front End Cover** fill plug hole. Add gear oil until oil runs out of the fill hole.

**STEP 15.** Apply RTV to threads on 2<sup>nd</sup> fill plug and install to 2<sup>nd</sup> fill hole.

**STEP 16.** Install and tighten any other parts (e.g., sway bar, pan hard rod) if removed.

*Owner's Manual/Maintenance Booklet recommends replacing axle lubricant anytime axle is submerged in water. (Refer to Owner's Manual/Maintenance Booklet for details).*



**Parts List**

- (1) Cast Aluminum Cover
- (1) 1/4" NPTF Drain Plug
- (2) 1/2" NPT Filler Plug
- (10) 5/16"-18 Bolts
- (10) 5/16" Washers

**Tools List**

- Jack & Jack Stands
- Drain Pan
- Rags
- RTV Silicone Gasket Maker
- Gear Oil
- Gear Oil Pump
- Torque Wrench
- 3/8" Ratchet & 3" Extension
- 1/4" Allen
- 3/8" Allen
- 1/2" Socket
- 3/4" Socket
- Flat Blade Screwdriver